

# BORD NA MÓNA – DERRYFADDA BOG

## Drainage Management Plan



IBE1933  
Rp12  
November 2021

## REPORT

### Document status

Version	Purpose of document	Authored by	Reviewed by	Approved by	Review date
D01	Draft	Various	Francis Mackin	Grace Glasgow	05/10/2021

### Approval for issue

Grace Glasgow



5 October 2021

The report has been prepared for the exclusive use and benefit of our client and solely for the purpose for which it is provided. Unless otherwise agreed in writing by RPS Group Plc, any of its subsidiaries, or a related entity (collectively 'RPS') no part of this report should be reproduced, distributed or communicated to any third party. RPS does not accept any liability if this report is used for an alternative purpose from which it is intended, nor to any third party in respect of this report. The report does not account for any changes relating to the subject matter of the report, or any legislative or regulatory changes that have occurred since the report was produced and that may affect the report.

The report has been prepared using the information provided to RPS by its client, or others on behalf of its client. To the fullest extent permitted by law, RPS shall not be liable for any loss or damage suffered by the client arising from fraud, misrepresentation, withholding of information material relevant to the report or required by RPS, or other default relating to such information, whether on the client's part or that of the other information sources, unless such fraud, misrepresentation, withholding or such other default is evident to RPS without further enquiry. It is expressly stated that no independent verification of any documents or information supplied by the client or others on behalf of the client has been made. The report shall be used for general information only.

Prepared by:

#### RPS

Mark Wilson  
Senior Engineer - Water Environment and Flood Risk  
Management

Elmwood House  
74 Boucher Road, Belfast  
Co. Antrim BT12 6RZ

T +44 2890 667 914  
E mark.wilson@rpsgroup.com

Prepared for:

#### Bord na Móna

Padraig Naughton  
Civil Engineering Manager

Boora, Leabeg, Tullamore  
Co Offaly

T +353 87 622 7524  
E Padraig.naughton@bnm.ie

# Contents

Executive Summary.....	1
<b>1 INTRODUCTION .....</b>	<b>2</b>
<b>2 BASELINE ASSESSMENT .....</b>	<b>4</b>
2.1 Study Area.....	4
2.2 Catchment Runoff Characterisation .....	5
2.3 Hydrogeological & Soil Characterisation.....	7
2.4 Morphological and Hydraulic Characterisation .....	7
2.5 Land Use Character .....	8
2.6 Flood Risk .....	9
2.7 Summary .....	10
<b>3 BOG REHABILITATION PLAN .....</b>	<b>13</b>
3.1 Impact Screening .....	13
3.2 Impact Assessment .....	15
3.2.1 Water Table Impact .....	15
3.2.2 Increased Runoff .....	18
3.2.3 Low Flow Assessment .....	19
3.3 Potential Risk Areas .....	21
<b>4 OBJECTIVES.....</b>	<b>23</b>
<b>5 DRAINAGE MANAGEMENT MEASURES.....</b>	<b>24</b>
5.1 Key Drainage Features .....	24
5.1.1 Boundary Drains .....	25
5.1.2 Bog Rehabilitation Modification .....	25
5.1.3 Maintenance of Silt Ponds .....	25
5.1.4 Monitoring .....	26
5.2 Identification of Measures .....	26
5.3 Interaction with Monitoring Plan.....	30
5.4 Residual Risk & Limitations.....	30
5.5 Climate Change Adaptability.....	30
<b>6 SUMMARY OF DRAINAGE MANAGEMENT PLAN .....</b>	<b>32</b>

## Tables

Table 2-1 Physical Catchment Descriptors of Sub-Catchments Draining the Bog .....	6
Table 2-2 Potential Opportunities / Constraints .....	12
Table 3-1 BRP measures proposed at Derryfadda Bog.....	13
Table 3-2 Parameters of Catchment Low Flow Risk.....	20
Table 3-3 Assets at Risk.....	21
Table 5-1 Selection of DMP Measures.....	29
Table 6-1 Drainage Management Plan .....	32

## Figures

Figure 1-1 Location of Derryfadda Bog .....	3
Figure 2-1 Derryfadda Bog .....	4
Figure 2-2 Drainage Networks and Sub-Catchments Draining Derryfadda Bog.....	5
Figure 2-3 Morphological and Hydraulic Characteristics of Derryfadda Bog and Environs .....	8
Figure 2-4 Land use Characteristics of Derryfadda Bog and Environs .....	9

## REPORT

---

Figure 2-5	Flood Risk at Derryfadda Bog .....	10
Figure 3-1	Derryfadda Bog Rehabilitation Plan- Zone of Influence.....	15
Figure 3-2	The effect of water table rise due to bog rehabilitation .....	16
Figure 3-3	Conditions affecting water table .....	17
Figure 3-4	Overall Catchment Risk .....	20
Figure 3-5	Derryfadda Bog Rehabilitation Plan- Assets at risk .....	21
Figure 4-1	Derryfadda Bog DMP objectives .....	23
Figure 5-1	Key drainage features for Derryfadda Bog .....	24
Figure 5-2	DMP measures for Derryfadda Bog .....	28

## EXECUTIVE SUMMARY

Derryfadda Bog is located in Co. Galway, less than 2km south of Ballyforan. Derryfadda Bog discharges to the river Suck directly on the north eastern and eastern boundaries, as well as to two tributaries of the Suck, the Killaderry stream 010 and the Lughanagh 010, which flow through the bog in a north west to south east direction. Large areas in the centre of Derryfadda bog are constrained out rehabilitation due to renewable interest where pumps will be retained.

The rehabilitation measures will generally result in reduced runoff and drainage from the existing peat fields through a mixture of techniques including wetland creation, drain blocking, cell bunding and re-profiling. It is assumed that these measures will not significantly alter the existing topographical catchments.

Potential impacts were considered: the potential for changes in flows downstream and the potential for increased water table levels impacting adjacent lands. Observations from previous rehabilitation measures, which have returned peatlands to their natural water retention function, has shown a reduction in the downstream run off. Based on this evidence the rehabilitation of Derryfadda Bog will result in reduced downstream flows.

The potential for increased water table levels and to a lesser extent marginal alteration of the topographical catchments has been assessed based on a precautionary approach. The rehabilitation measures proposed for Derryfadda Bog will result in the creation of some wetland areas and it is expected that rehabilitated water levels will be higher than the peat field surface. In this scenario adjacent lands which are at a lower level than these parts of the bog could potentially be impacted. These vulnerable areas have been defined through a zone of influence approach.

The risk of low flow conditions in drains downstream of Derryfadda Bog was found to be low in all but one catchment where the risk of low flow is considered moderate therefore no further assessment was recommended for Derryfadda bog.

Each of the land parcels have been assessed based on its vulnerability to increased water table levels within the bog. With a lack of suitable boundary drains in some locations to separate the rehabilitation area and potentially vulnerable lands, constraints to the bog rehabilitation plan were considered.

DMP measures include, retention of boundary drains, upgrading drains, the maintenance of existing silt ponds and monitoring.

In the event that the monitoring, which will be undertaken by BnM, identifies an adverse water table or drainage impact to adjacent lands in relation to present day conditions accounting for seasonal variability, a suite of measures can be chosen from and will be implemented to establish suitable mitigation. This approach accounts for unknowns and limitations inherent in this DMP study and provides a precautionary approach to drainage management.

# 1 INTRODUCTION

Derryfadda Bog is located in Co. Galway, less than 2km south of Ballyforan, further site details are described in the Derryfadda Bog Site Characterisation Report 2022, thereafter referred to as the Characterisation Report. Derryfadda Bog is part of the Derryfadda Bog Group. Bord na Móna operated peat extraction within the Derryfadda Bog Group under IPC Licence (Ref. P0502-01) issued and administered by the EPA. Condition 10.2 of this licence requires the preparation of Derryfadda Bog- Cutaway bog decommissioning and rehabilitation plan 2021<sup>1</sup>, thereafter referred to as the Rehabilitation Plan, for permanent rehabilitation of the boglands within the licensed area. Large areas in the centre of Derryfadda bog are constrained out rehabilitation due to renewable interest where pumps will be retained.

It is proposed by Government that Bord na Móna carry out enhanced decommissioning, rehabilitation and restoration under the Peatlands Climate Action Scheme on peatlands previously used for energy production. This proposed Scheme will significantly go beyond what is required to meet rehabilitation and decommissioning obligations under existing EPA IPC licence conditions. Improvements supported by the Scheme will ensure that environmental stabilisation is achieved and significant additional benefits, particularly relating to climate action and other ecosystem services, will also be delivered.

One of the key issues for Bord na Móna is the potential hydrological impact rehabilitation of this bog may have on the bog, surrounding lands and lands downstream which may be hydrologically linked to the bog. Rehabilitation measures generally seek to increase water table levels and surface water retention such that they are closer to the surface to encourage peat formation, the associated ecological benefits and carbon sequestration capacity. While in general terms this will reduce the volume of water released from the bog following a rainfall event, the impact on flood run-off is less predictable. Furthermore the increase in the local water table could result in negative impacts to surrounding lands if mitigation measures are not applied.

This Drainage Management Plan (DMP) for Derryfadda Bog seeks to establish the baseline hydrological performance of the bog and the surrounding drainage network. The plan sets out the characterisation of the bog and surrounding lands, the existing performance of the drainage network and the level of flood risk. The plan identifies the potential hydrological zone of influence of the bog and the objectives, risks and opportunities associated with the rehabilitation of the bog. The plan assesses the potential impact of the various rehabilitation measures which are proposed on the local drainage network and flood risk. It sets out, where necessary, mitigation measures required to reduce impacts. The plan sets out the measures which are required to be delivered in advance or in parallel with the rehabilitation plan as well as the long term operation and retention of the drainage network and associated infrastructure. The plan assesses the level of residual risk, the potential impact due to climate change and the adaptability of measures in response to these climate change impacts.

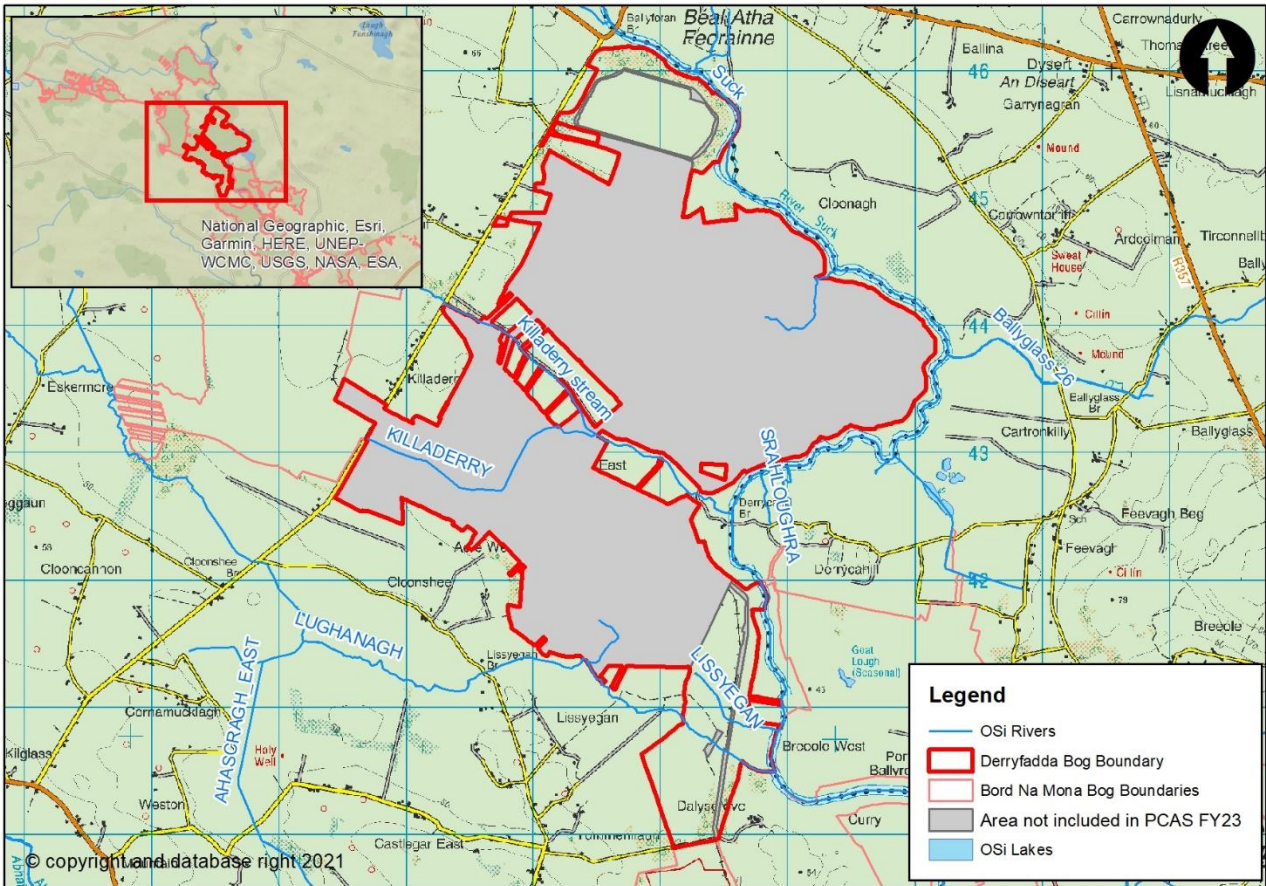


Figure 1-1 Location of Derryfadda Bog<sup>1</sup>

<sup>1</sup> Further maps and figures can be found in the Derryfadda Bog GIS map book 2022

## 2 BASELINE ASSESSMENT

Through cessation of peat extraction and implementation of the Rehabilitation Plan there is the potential to hydrologically impact the adjacent land. The extent of the impact will depend on the existing baseline characteristics of the catchments which drain the bog and the adjacent lands.

The purpose of characterising the catchment area is to develop an understanding of how the catchment currently operates and drains. The characterisation also investigates the risks, constraints and opportunities to the operation and drainage.

### 2.1 Study Area

To characterise the catchments a study area was determined encompassing the total catchment area draining the bog. Derryfadda Bog discharges to the River Suck directly on the north eastern and eastern boundaries, as well as to two tributaries of the Suck, the Killaderry stream 010 and the Lughanagh 010, which flow through the bog in a north west to south east direction. A review was carried out to delineate the external drains around the bog as presented in Figure 2.1 along with their associated hydrological catchment area.

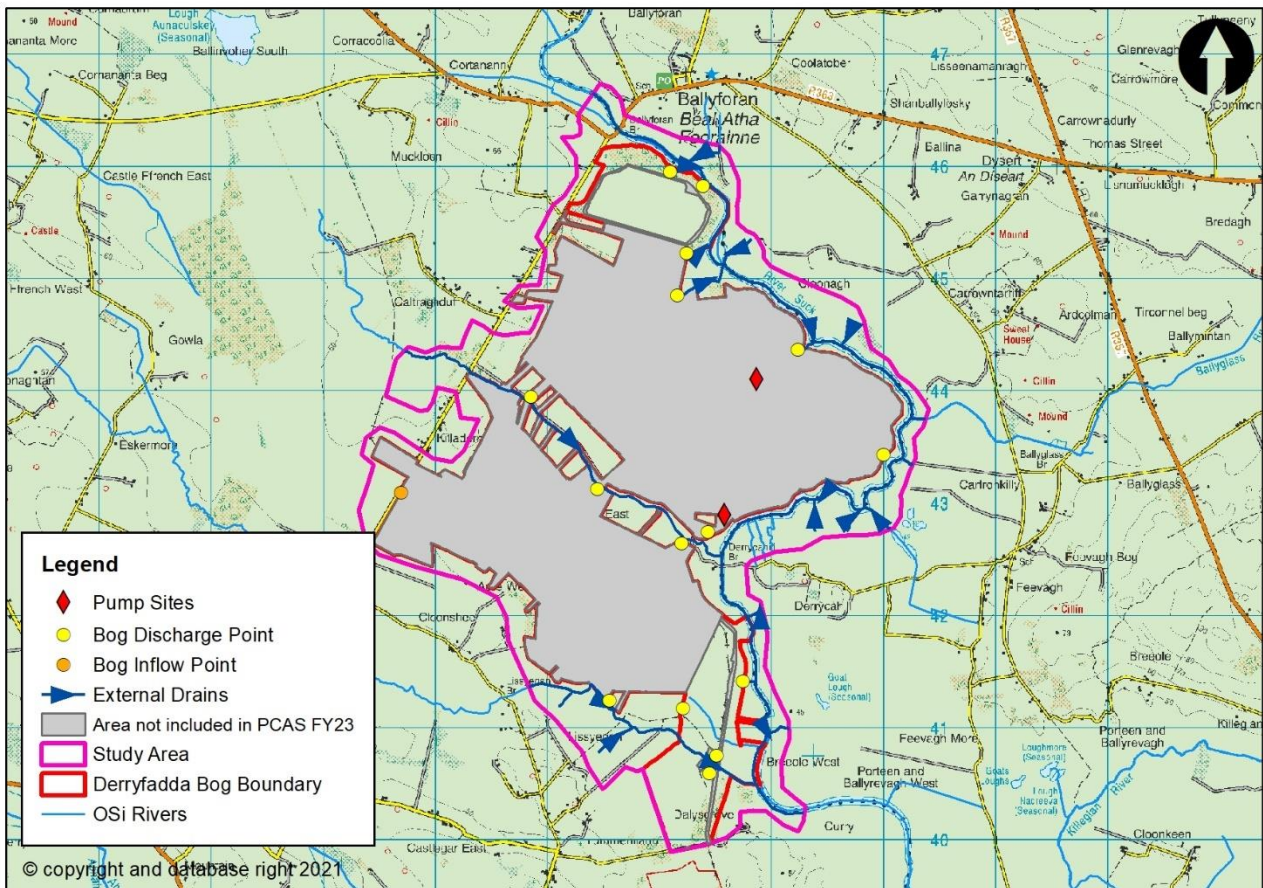


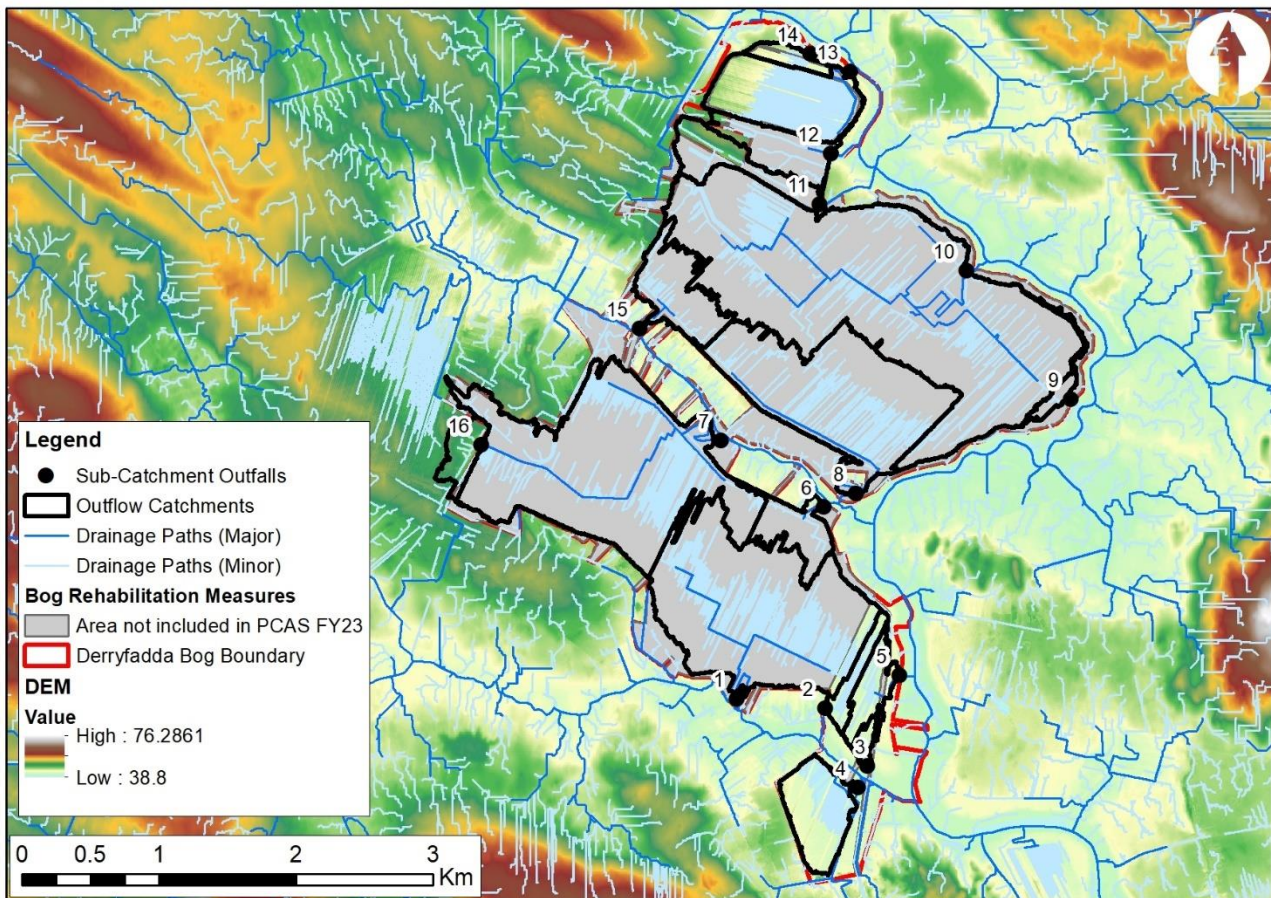
Figure 2-1 Derryfadda Bog



## 2.2 Catchment Runoff Characterisation

A hydrological analysis was carried out within the study area to delineate the sub catchments of the bog drains and the external drains. A recent survey of drainage was carried out by Bord na Móna and this was reviewed, and the bog sub-catchments confirmed. Sub-catchments of the external drains were identified using ARC GIS Hydrology tools. The sub catchments are presented in Figure 2.2.

The Flood Studies Update (FSU) catchment characteristics provide an overview of how much rain a catchment receives, how impermeable the catchment is and how quickly the water will runoff the catchment due to topography and drainage. Table 2.1 summarises the FSU catchment descriptors for the sub-catchments identified in Figure 2-2.



**Figure 2-2 Drainage Networks and Sub-Catchments Draining Derryfadda Bog**

There are fifteen sub-catchments draining Derryfadda Bog and one minor sub-catchment (16) draining adjacent lands into the bog, catchments area ranging in area from 0.04km<sup>2</sup> to 2.98km<sup>2</sup>. The catchments are subject to rainfall of 922-1062 mm/year. The Baseflow Index for the catchments is 0.358-0.644 representing a moderate to high catchment permeability. The catchments range from very flat to moderately flat. This information is based on wider catchment characteristics and it is acknowledged that these will vary within the bog.

## REPORT

The Index Flood Flow ( $Q_{med}$ ) values, which represent the typical peak flood flow which might be anticipated (a 50% chance of being exceeded in any given year), for each of the sub-catchments have been calculated. This is based on two different methods, the Flood Studies Update (FSU) 5 variable equation designed for small and / or urbanised catchments in Ireland, and the RPS derived Peat  $Q_{med}$  equation, derived in support of the Drainage Management Plan project for SAC sites on behalf of NPWS. Both methods result in very similar  $Q_{med}$  values where the proportion of arterial drainage (ARTDRAIN2) is assumed to match the proportion of the catchment managed by Bord na Móna (i.e.drained).

**Table 2-1 Physical Catchment Descriptors of Sub-Catchments Draining the Bog**

Sub-Catchment Number	Area (km <sup>2</sup> )	SAAR (mm)	BFI	FARL	ARTDRAIN2	PEAT (%)	S1085 (m/km)	FSU5 $Q_{MED}$ (m <sup>3</sup> /s)	Peat $Q_{MED}$ (m <sup>3</sup> /s)
1	1.48	1024	0.591	1	0.000	100.0	0.835	0.308	0.320
2	0.09	1019	0.644	1	0.000	100.0	-1.606	0.001	0.001
3	0.04	1018	0.644	1	0.000	100.0	2.525	0.012	0.011
4	0.30	1018	0.644	1	0.000	100.0	-6.019	0.001	0.001
5	0.15	1054	0.562	1	0.000	100.0	0.364	0.032	0.048
6	0.20	988	0.459	1	0.000	100.0	1.512	0.068	0.066
7	1.89	992	0.463	1	0.000	97.8	1.990	0.571	0.467
8	1.14	988	0.459	1	0.000	100.0	0.985	0.301	0.299
9	0.06	973	0.553	1	0.000	100.0	1.448	0.018	0.018
10	2.98	973	0.553	1	0.000	100.0	0.398	0.483	0.558
11	0.24	1061	0.595	1	0.000	86.3	0.395	0.049	0.070
12	0.24	1061	0.595	1	0.000	33.6	5.213	0.094	0.071
13	0.49	1062	0.596	1	0.000	100.0	3.625	0.166	0.132

14	0.07	1062	0.596	1	0.000	100.0	5.455	0.031	0.025
15	0.31	922	0.462	1	0.000	100.0	3.170	0.111	0.082
16	0.12	971	0.358	1	0.000	100.0	0.604	0.040	0.050

### 2.3 Hydrogeological & Soil Characterisation

Full details of the hydrological and soil characterisation can be found in the Derryfadda Bog – site characterisation report 2022.

In summary, Derryfadda is underlain by Visean limestone and the Lucan Formation. The Visean limestone is classified as regionally important aquifer as it is subject to karstification (conduit). The Lucan formation is a Locally Important Aquifer as it is Moderately Productive only in Local. There is a mapped karst features on the bog (swallow hole) outside of the rehabilitation area, along with several mapped karst features in the surrounding area including enclosed depressions, turloughs and swallow holes.

Quaternary Sediment maps show Derryfadda underlain by peat, yet surrounded by inorganic deposits, including Till derived chiefly from Limestone and alluvium to the east (along the River Suck). Lacustrine marl deposits have also been mapped within the bog. GSI groundwater vulnerability mapping indicates that there is generally low vulnerability in the area of the bog however there are areas of high and extreme vulnerability both within and immediately adjacent to the bog, owing to the presence of karstified limestone features, bedrock close to the ground surface and the mapped swallow hole within the bog which is outside of the rehabilitation area. While Groundwater Vulnerability is typically used to indicate the susceptibility to groundwater pollution, it can provide a useful proxy indication of likely groundwater flow rates in the surrounding area. In general, the bedrock types are not anticipated to facilitate high rates of ground water flow, however, elevated ground water flow rates may be associated with the locally important aquifer

### 2.4 Morphological and Hydraulic Characterisation

A desk top review was carried out of bog drains and external drains. Morphological and hydraulic features were identified.

The external drains are generally small with gentle bed slopes. Aerial photography shows no signs of erosion or deposition however, given that the drains are considered small with gentle bed slopes there would be a risk of deposition, and therefore reduced land drainage efficiency. Risk of deposition would occur where there is potential for an erosion or debris source from the surrounding land and where there is potential head loss in the channel due to instream features. Figure 2.3 details the reaches of the external drains where there are potential erosion or debris sources and where instream features may facilitate deposition. The figure shows that due to the location of woodlands, peat and commercial forest in the surrounding lands outside of BnM ownership and control there are existing potential sediment sources that could enter the external drains. Given the presence of culverts, sharp bends, channel widening and inflows along the external drains there would be

a potential of sediment settling and deposition occurring. The potential for Derryfadda bog being a sediment source to the external drains is considered low as most of the discharge points from the production fields have a silt pond present with the exception of outfall 11 which drains constrained bog that is not part of the rehabilitation plan.

A review of the bog drains was carried out. The Bord na Móna drainage survey details the open drains, pipes, pumps, settlement silt ponds and discharge points. Most of the discharge points from the production fields have a silt pond located upstream which will reduce the amount of peat leaving the bog as water is drained. The drains in the bog have very gentle bed slopes and pass through numerous pipes before discharging from the bog. It is anticipated that the bog drainage network would be sensitive to drain and pipe alterations.

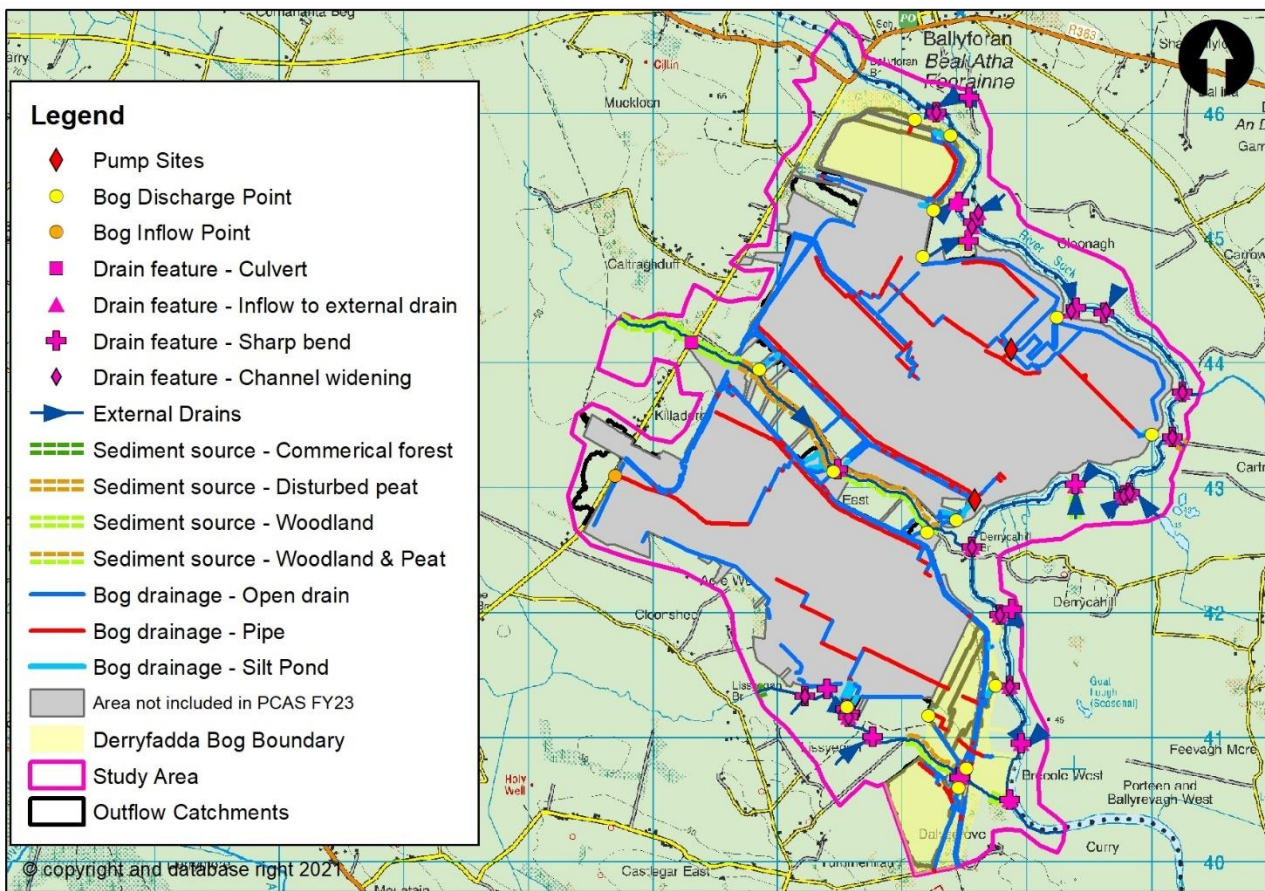


Figure 2-3 Morphological and Hydraulic Characteristics of Derryfadda Bog and Environs

## 2.5 Land Use Character

The majority of the land within the study area is peat bog. The remaining areas of the study area consist of inland marshes, agricultural land with natural vegetation and pasture. The CORINE land use dataset was used to identify land use types. This dataset was then reviewed using aerial photography to establish land use amendments or land use alterations. The review found that additional areas of commercial forest and woodland are present in the study area. Minor roads and properties are located in the study area also.

The pasture land is mainly used for livestock which provides food production. The commercial forests provide for timber production. The peat bog outside of the Derryfadda bog boundary is Castlegar Bog to the South also in the possession of BnM where rehabilitation is underway and Gowla Bog to the north west also in the possession of BnM and proposed for rehabilitation. Other areas of peat bog are undisturbed which contribute to carbon storage and biodiversity. The woodland areas are likewise providing carbon storage and biodiversity albeit as a different habitat to the peat bogs. The River Suck and areas of its floodplain are designated Special Protection Areas (SPA's). The roads within the study areas service properties and provide access to the pastures, forests and peat bogs. The railway provides access between bogs.

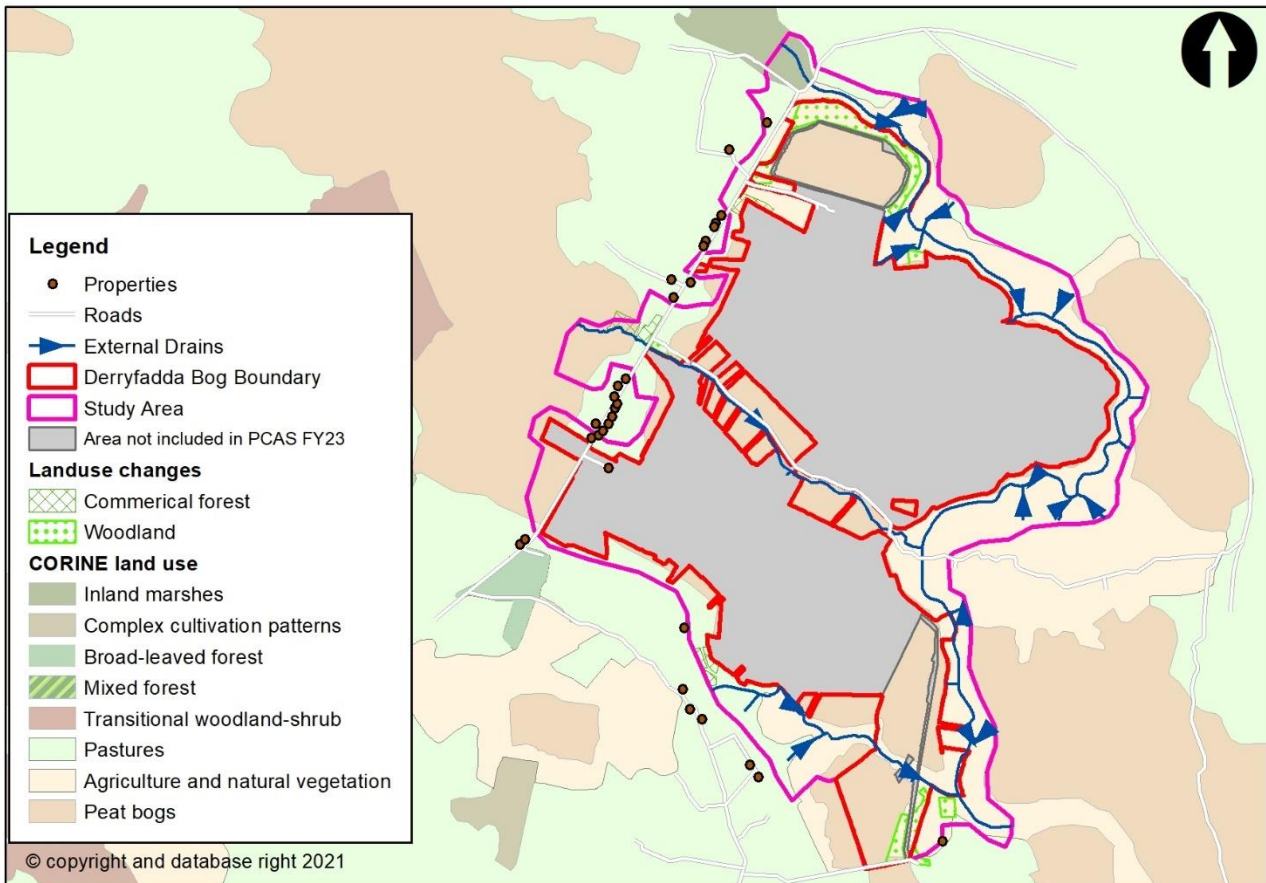


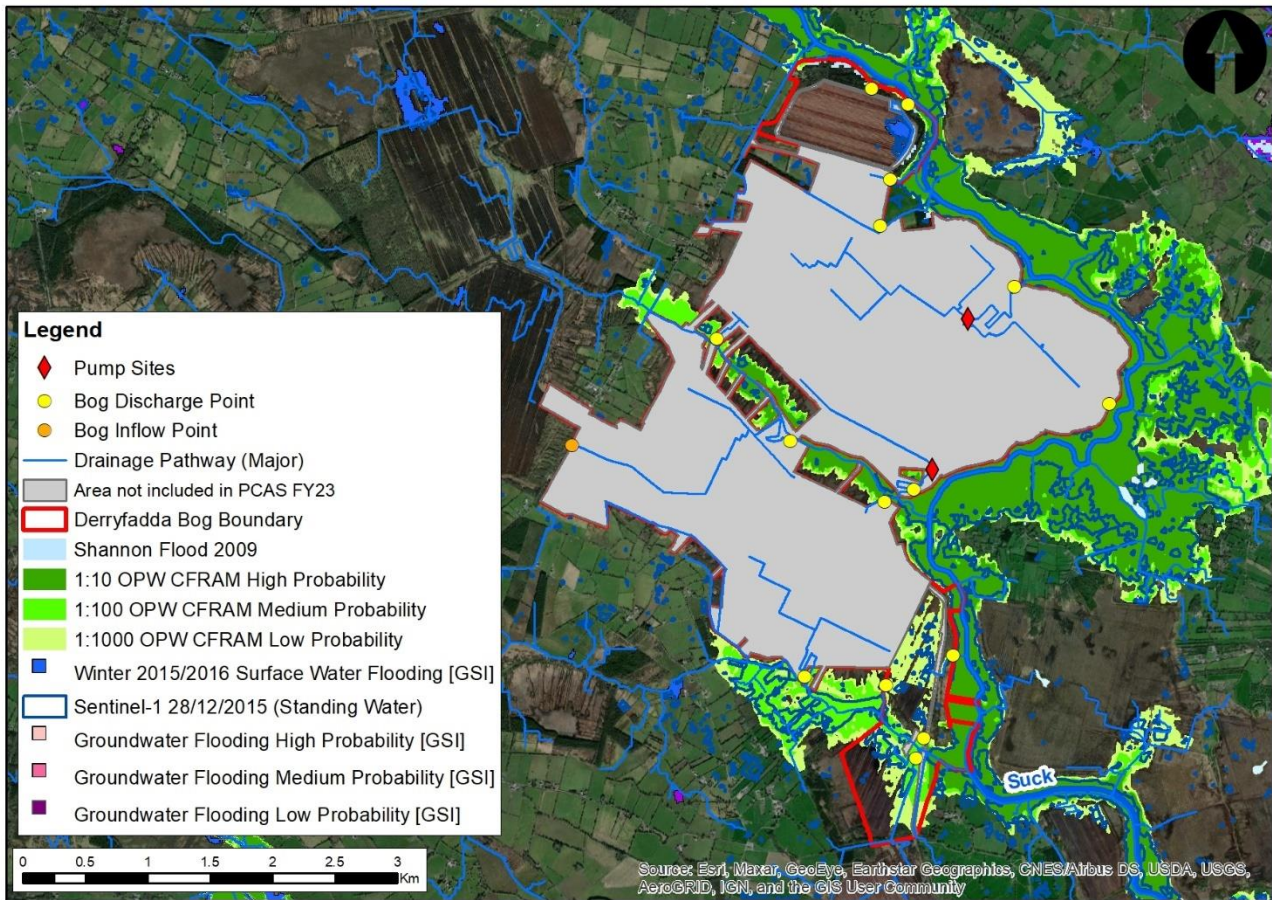
Figure 2-4 Land use Characteristics of Derryfadda Bog and Environs

## 2.6 Flood Risk

A number of sources of flood risk information are available, both predicted and simulated, in proximity to Derryfadda. These include:

- CFRAM Study maps setting out the predicted fluvial 10%, 1% and 0.1% Annual Exceedance Probability (AEP) fluvial flood scenarios
- GSI predicted water table flood maps for high, medium and low probability events
- Mapped fluvial flood extents for the 2009 flood event

- Mapped flood extents for the 2015 flood event (from Sentinel-1 satellite imagery) and a GSI surface water flooding dataset for the same event
- Anecdotal evidence from Bord na Móna



**Figure 2-5 Flood Risk at Derryfadda Bog**

The CFRAM maps show that the River Suck and its tributaries which drain the bog demonstrate a risk of flooding on the bog or reduced drainage from the River Suck. The 2015/2016 surface water flooding and the 2009 Shannon flood event data indicates that areas of the bog are at risk of flooding. This is consistent with the local knowledge from Bord na Móna operatives familiar with Derryfadda Bog.

Historical anecdotal evidence was reviewed to ascertain if there are any known flooding or drainage issues from these smaller watercourses to the bog or adjacent land. No drainage issues have been identified along the Derryfadda Bog boundary drains.

There is no predicted groundwater flooding to the bog indicated on the GSI datasets.

## 2.7 Summary

The drainage network sub-catchments within Derryfadda Bog and its environs were used to delineate the study area for the Derryfadda Drainage Management Plan. The overall catchment area was characterised within the context of hydrology, hydrogeology, morphology, landuse and flood risk.

A detailed drainage network delineation was carried out. Drains within the bog and external drains were identified. The assessment showed that Derryfadda Bog discharges to the river Suck directly on the north eastern and eastern boundaries, as well as to two tributaries of the Suck, the Killaderry stream 010 and the Lughanagh 010, which flow through the bog in a north west to south east direction.

The catchment area is considered to be relatively small, flat, moderate to high permeability with 922-1062 annual rainfall. Peak flood flows range from around 0.003-0.43 m<sup>3</sup>/s per square kilometre (0.03–4.3 l/s per hectare) for the Q<sub>med</sub> event to 0.008-0.99 m<sup>3</sup>/s per square kilometre (0.08-9.9 l/s per hectare) for the Q<sub>100</sub> year plus climate change event.

The bedrock within the catchment may lead to lead to high rates of groundwater flow. Several karst features were identified in close proximity to the bog with available GSI records, including a swallow hole within the bog itself but outside of the rehabilitation area. The subsoil overlying the bedrock is mainly till derived from limestone which is considered to have a moderate permeability with alluvium to the east which may have higher permeability.

The morphological and hydraulic characteristics of the external drains were assessed. No signs of erosion or deposition could be observed. Areas of deposition risk were identified along each drain. Culverts, bends, channel widening and inflows were identified as potential factors for sediment deposition. Woodlands, commercial forest, and peat adjacent to the drains were identified as potential sources of sediment. The potential for Derryfadda bog being a sediment source to the external drains during proposed PCAS activities is considered Low due to the presence of silt ponds at most discharge points, in addition to the cessation of peat harvesting.

The land use was assessed within the study area. The majority of land is peat bog. The remaining land is made up of inland marshes, agricultural land with natural vegetation and pasture. The land provides important services such as food production, timber production, carbon storage, industry, biodiversity and habitat creation.

Table 2.2 summarises the constraints, risks and opportunities identified as part of the baseline assessment.

**Table 2-2 Potential Opportunities / Constraints**

Land Parcel / Feature	Risk or Opportunity?	Details
Agricultural land	Constraint	It is important to maintain the productivity of agricultural land surrounding the bog some of which are designated as SPA.
Peat bog	Constraint	The adjacent peatland is bogs also in the possession of BnM: Castlegar which is undergoing rehabilitation and Gowla which is proposed for Rehabilitation. The impact from Derryfadda bog should be considered.
Roads	Constraint	Minor roads providing access to dwellings, agricultural land and peat bogs are located in the study area. Access to these roads should be maintained.
Rivers	Constraint	The River Suck flows adjacent to Derryfadda bog and the Lughanagh stream flows through the rehabilitation area in the south east of the site. No activity should adversely impact this area and the SPA.
External drains	Risk	Risk of deposition in the drains is considered high due to potential sediment sources in adjacent lands and features within the external drains. External drains may be sensitive to change. Risk of reduced flows in drains.
Bog rehabilitation plan	Opportunity	To improve water quality discharging from the bog; stabilisation or improvement in water quality parameters (e.g. suspended solids)
Bog rehabilitation plan	Opportunity	To reduce carbon emissions from the bog and to set bog on a trajectory towards naturally functioning peatlands habitats. Derryfadda has potential to develop embryonic Sphagnum-rich vegetation that has potential to be a carbon sink.
Bog rehabilitation plan	Opportunity	To improve biodiversity by vegetating bare peat and creating more habitat for flora and fauna.
Bog rehabilitation plan	Opportunity	To reduce runoff and restore a more natural runoff regime, thus contributing to flood risk management.



### 3 BOG REHABILITATION PLAN

The measures identified for the bog rehabilitation plan are detailed in the Rehabilitation Plan report.

Each measure while designed to promote the rehabilitation and re-wetting of the bog will have a potentially positive and/or negative impact on the adjacent land. This section identifies and assesses these potential impacts.

#### 3.1 Impact Screening

Table 3.1 summarises the rehabilitation measures proposed for the Derryfadda Bog and their potential impact to adjacent land.

**Table 3-1 BRP measures proposed at Derryfadda Bog**

BnM rehabilitation measure	Description	Potential Impact	Potential Impact Description
Drain blocking, berm, and field re-profiling,	Existing production field drains within the bog areas that convey surface water away from the former peat production fields towards the bog discharge points will be modified to reduce conveyance or removed altogether by infilling.  Surface water runoff through the bog will be slowed allowing the bog to store more water	Positive and negative	Reduced runoff from the bog discharge points resulting in less flow in the external drains located downstream.  Reduced conveyance at bog inflow point resulting in increased water volume in external drain located upstream if conveyance channels through the bog are blocked.
Blocking outfalls	Most production field drain systems drain into a headland pipe running perpendicular to the peat field. This intersection is known as an outfall.  By blocking the outfalls each production field drain will be prevented from operating resulting in the ditch storing water and raising the water table level in the bog. This will allow the bog to store more water and bring the water table level to the surface.	Positive and negative	Reduced runoff from the bog discharge points resulting in less flow in the external drains located downstream.  Raised water table levels to the bog surface will create a hydraulic gradient across the bog into the adjacent land. Water table levels in lands within this hydraulic gradient will potentially rise. The effect will be greatest immediately beside the bog.
Managing overflows with overflow pipes	This measure is usually combined with blocking outfalls which cause water table levels to rise. As the bog fills up it will want to overtop at the lowest part of the bog boundary. Overflow pipes control the location this occurs and where the overtopping water is discharged to.	Neutral	The control features will determine the location of the discharge from the bog. However the flow leaving the bog once it is full will be the same as prior to remedial works.  Overall the volume of water discharging from the bog will be reduced but will contribute to raised water table levels within

the bog and potentially within the zone of influence (subject to mitigation).

---

Sphagnum inoculation	moss	This measure will propagate sphagnum moss within the bog. Sphagnum moss will cause bog regeneration as it grows and layers.	Positive	Sphagnum moss can hold up to 10 times its weight in water. As such this measure will store water reducing the runoff from the bog into the exterior drains. This will help retain the external drainage efficiency which adjacent land relies on.
----------------------	------	---	----------	---

This measure may also contribute to runoff reduction and wider catchment FRM goals but in a piecemeal way.

---

Silt ponds		Existing silt ponds will be maintained to store runoff water from the bog and allow any suspended peat to settle out of the water before it is discharge to the external drains.	Neutral	<p>Maintained capacity from the bog discharge points to the external drains and river located downstream.</p> <p>Maintained quality of water being discharged from the bogs into the external drains or river.</p>
------------	--	--	---------	--

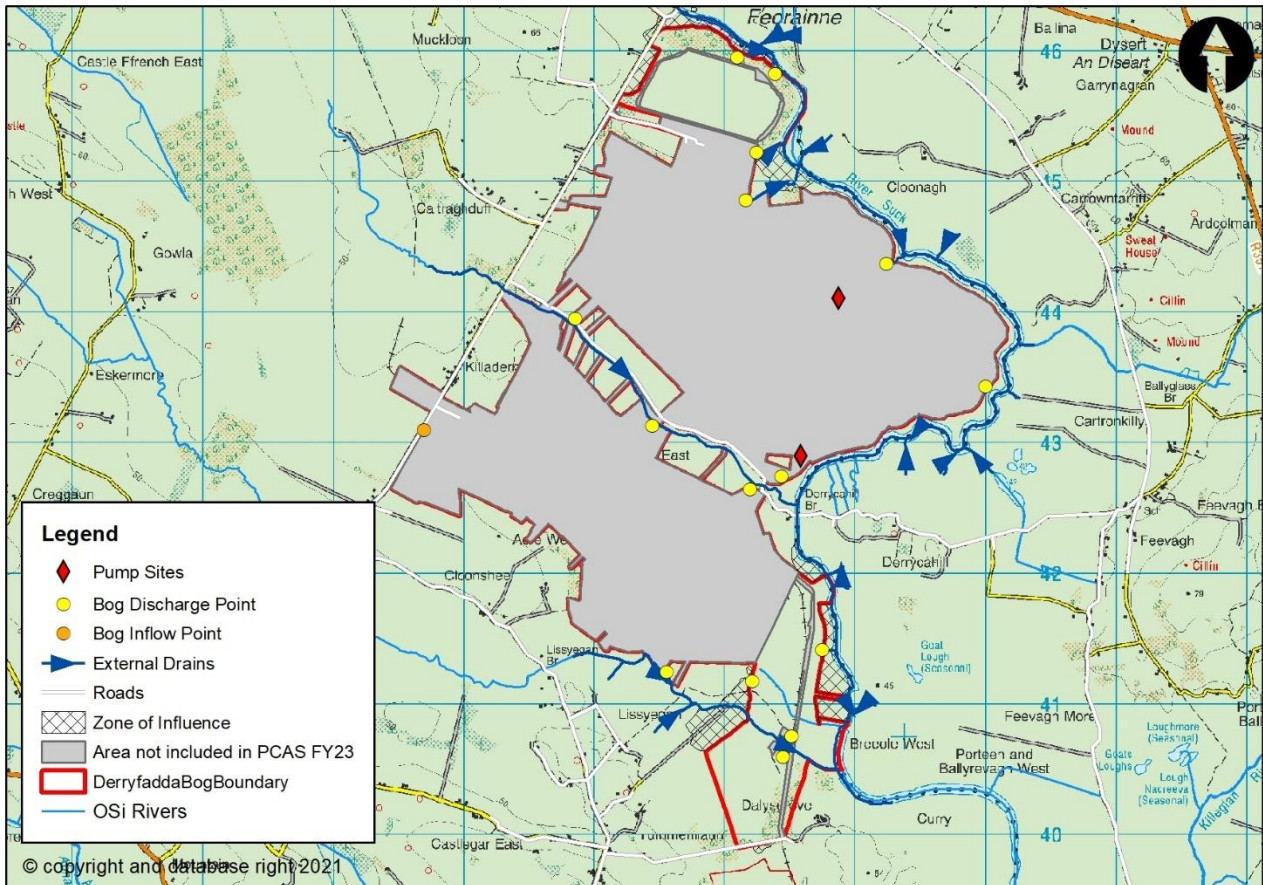
---

Wetland creation		Areas prone to flooding and depressions on shallow peat are designated for wetland creation. Shallow standing water will be allowed to occur resulting in increased water storage. Establishment of reeds and other rhizomes will form part of the wetland creation.	Positive and negative	Reduced runoff from the bog discharge points resulting in less flow in the external drains and river located downstream.
------------------	--	--	-----------------------	--

---

### 3.2 Impact Assessment

Three potential impact sources were identified; water table rise, increased runoff from the bog and low flow risk. These impact sources have the potential to make the adjacent land wetter and drain less efficiently or reduce water supply in adjacent drains. An assessment was carried out to delineate the zone of influence resulting from these potential impact sources. Figure 3.1 presents the areas which are at potential risk.

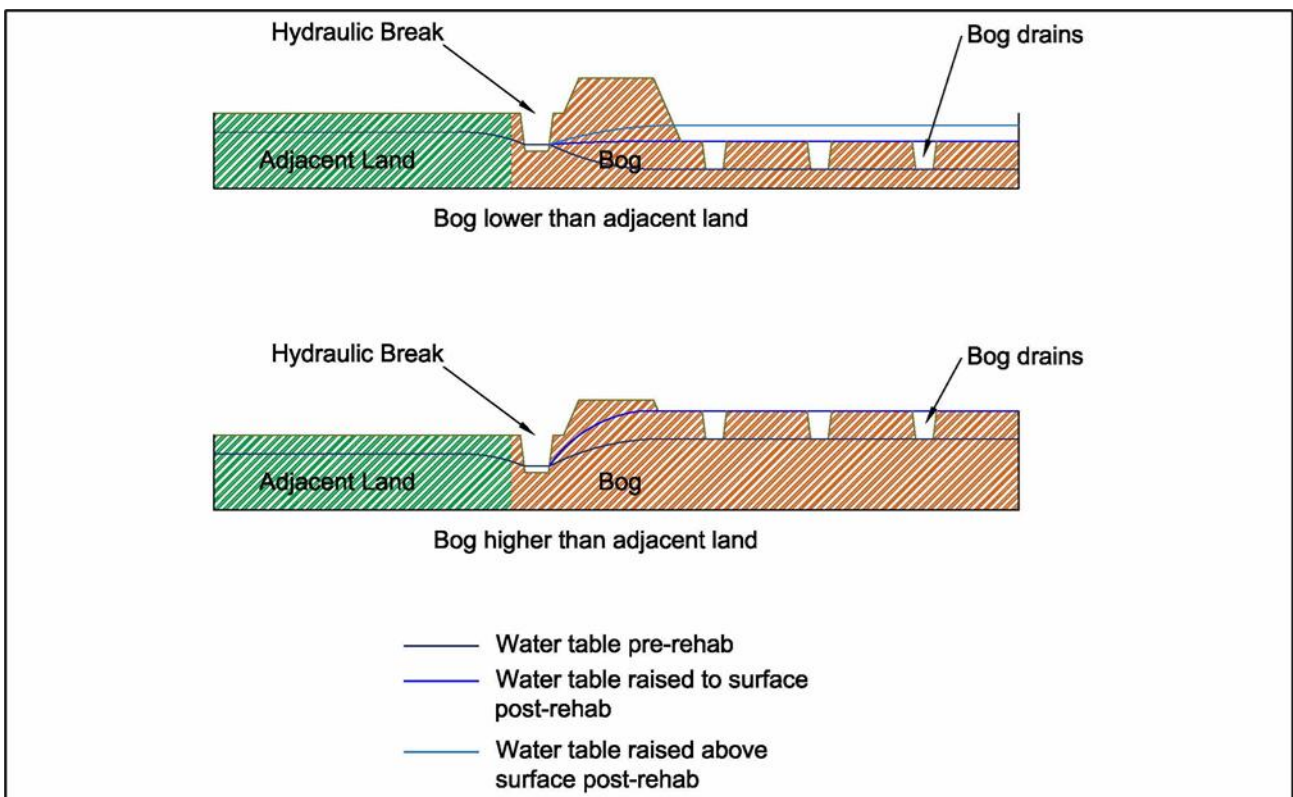


**Figure 3-1 Derryfadda Bog Rehabilitation Plan- Zone of Influence**

#### 3.2.1 Water Table Impact

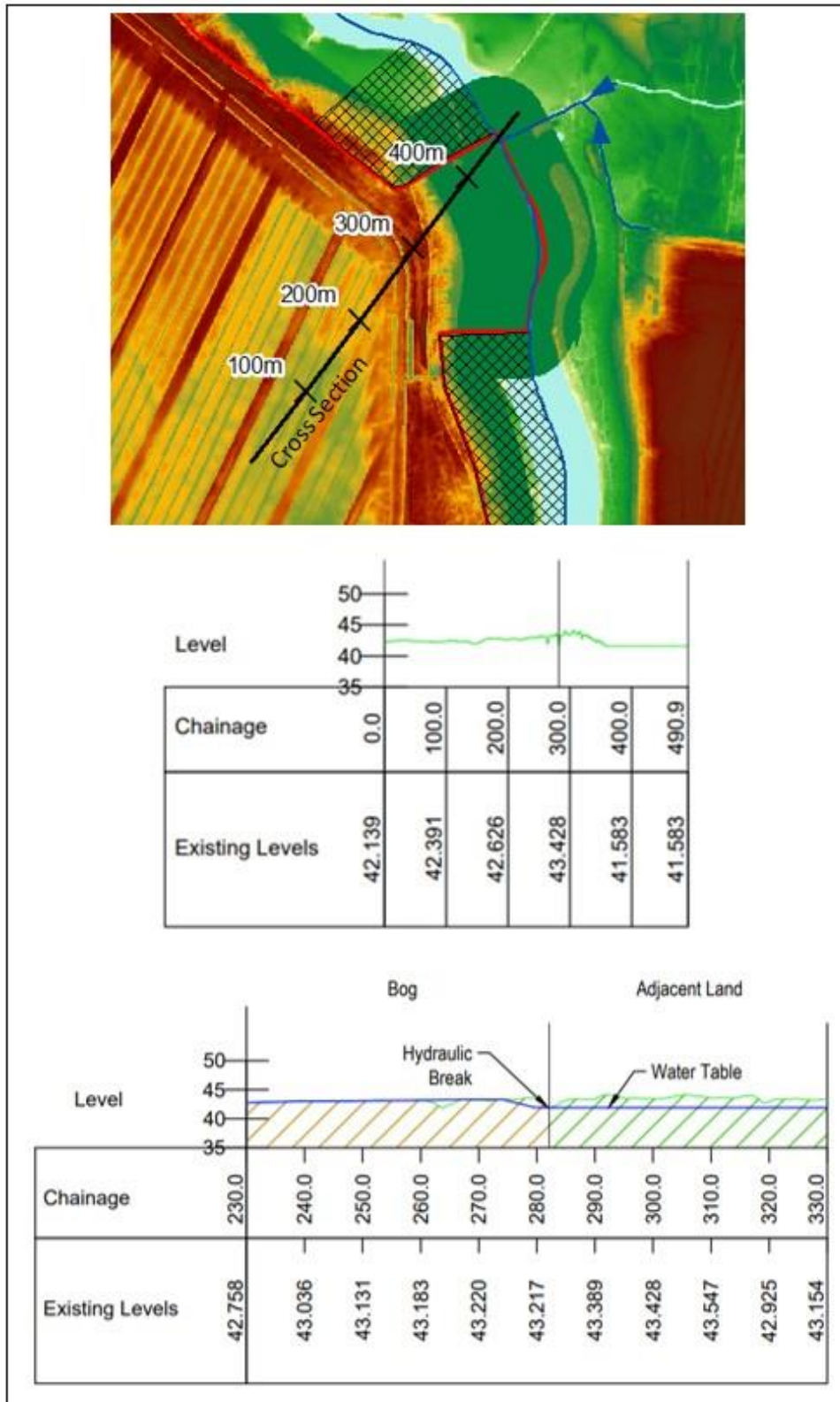
The impact of rehabilitation measures on water table levels within and adjacent to the bog is difficult to assess quantitatively in the absence of long term monitoring data and hydro-geological models of the bog. Nevertheless, it can be assumed that water table levels will rise within the bog itself given that this is an objective of the rehabilitation measures – to restore the hydrological conditions for peat formation. It can also be assumed that the maximum level which the water table will reach outside areas zoned as wetland is the surface of the peat fields post-rehabilitation. This is because topographical flow paths for surface water out of the bog (by gravity) will be retained and the PCAS FY23 bog area is not dependent on a pumping regime to drain surface water. For areas zoned as wetland the maximum water level will be at or above surface level as shallow water ponding is promoted through rehabilitation measures.

The surface of the bog may lie higher or lower than the adjacent land. This relationship between the bog and adjacent land needs to be considered when assessing potential water table rise. Figure 3.2 shows these two relationship scenarios. Where the bog is lower than the adjacent land it would be expected that the water table would remain lower on the bog side even when the water table is raised to the bog surface. If wetland areas are created and the water level is raised above the surface it may result in higher levels than the water table in adjacent lands. In this case the presence of a boundary drain can act as a hydraulic break bringing the water table down to its original level and preventing a rise in the water table in the adjacent land. Where the surface level of the bog is higher than the adjacent land the risk of raising the water table in the adjacent land is greater. However, in this scenario the presence of an effective boundary drain will collect runoff from the bog and act as a hydraulic break bringing the water table back down and preventing a rise in the water table in the adjacent land.



**Figure 3-2 The effect of water table rise due to bog rehabilitation**

For Derryfadda Bog the adjacent land lies lower than the bog in some locations, identified in Figure 3.1 as the Zone of Influence, and higher in other locations. Water table rise in lands adjacent to the Derryfadda Bog was assessed firstly by estimating the potential rise in water table within the bog. The drainage system in the bog is, on average, 0.8m deep. It can be expected that the water table would rise by 0.8m to bring it to the surface. A cross section was surveyed, as shown in Figure 3.3, to assess the potential impact of a water table rise.



**Figure 3-3 Conditions affecting water table**

The cross section shows that a rising head in the bog would create a hydraulic gradient across into the adjacent land with the potential for a raised water table in the adjacent land also. This action determines the zone of influence and the areas of potentially wetter ground. The presence of boundary drains however will act as a

hydraulic break controlling the hydraulic gradient and reducing the zone of influence. As these boundary drains lie lower than the adjacent land it is expected that they will function as a hydraulic break. This however is dependent on the drain's ability to adequately convey flow.

Drains that are inefficient with high water levels (independent from the bog rehabilitation measures) will also raise the water table in the bog and potentially in the adjacent lands to the bog would be wet. The avoidance of the drain full condition is dependent on the retention of a positive gravity drainage function of the boundary drains the adequate functioning of which is maintained.

A comprehensive survey of the majority of boundary drains which provide the water table cut-off function to agricultural lands is available for Derryfadda Bog. It is assumed that these drains would be able to convey  $Q_{med}$  (2 year return period) flows under non-backwater conditions which would be typical of natural watercourses in Ireland. Therefore under non-flood conditions it is expected that the external drains identified around Derryfadda Bog will act as a hydraulic break to any hydraulic gradient created by bog re-wetting. However there is a risk that should the flow regime in any external drain be changed post rehabilitation that the land adjacent to the drain would become wetter.

Caution should be exercised during any alterations of boundary drains around Derryfadda Bog. As described in section 2.3, the peat overlays low vulnerability bedrock. It is important to avoid the creation of new flow paths into the bedrock which has the potential of increasing water table flood risk elsewhere or altering the hydrogeological conditions for peat formation. If deepening of drains is undertaken it should therefore be undertaken with care so as not to deepen the drain beyond the base of the peat.

There is also a risk that as the bog fills with water and wants to discharge, and that unintended discharge locations would occur. A review of the bog boundary was carried out. No low points were identified that may become an unintended discharge location. Derryfadda Bog discharges to the river Suck directly on the north eastern and eastern boundaries, as well as to two tributaries of the Suck, the Killaderry stream 010 and the Lughanagh 010, which flow through the bog in a north west to south east direction. There is little risk to adjacent lands from increased flows from the bog owing to elevated water table levels. As previously set out this is dependent on existing boundary drainage network isolating the bog from lower level adjacent lands and providing a positive gravity drainage function. In other words capacity to convey  $Q_{med}$  or 2 year return period flows and a free flow (constantly falling) away from the bog.

### 3.2.2 Increased Runoff

Evidence from bogs that have previously been the subject of restoration measures demonstrates that the measures proposed at Derryfadda, which are all aimed at reducing runoff and retaining water within the bog, have the effect of reducing the frequency and magnitude of flood events by restoring a more natural hydrological regime. Restoration / rehabilitation has been successfully applied to numerous Bord na Móna bog sites as well as SAC sites such as Clara Bog (East), Raheenmore Bog, Carrownagappul Bog and Lisnageeragh Bog. Elsewhere, the restoration of peatland catchments in numerous sites across the UK, such as Exmoor National Park in Snowdonia, has demonstrated positive flood alleviation as a result of following rehabilitation measures and monitoring has shown reduced runoff from the moorland as a result of increased storage in the peat.

The risk of increased runoff from Derryfadda Bog is low. All rehabilitation measures being proposed will reduce runoff. However, there is a potential that if bog re-profiling is carried out as part of the bog rehabilitation measures that the bog sub-catchments will be modified. Changes in sub-catchments could result in certain discharge points draining larger areas. This would result in increased flows that could outweigh the effect of the reduced runoff arising from the rehabilitation. This is a moderately low risk at Derryfadda as the re-profiling of the bog, if carried out, will generally result in the same topographical flow paths, catchment watersheds and discharge locations as in the pre-rehabilitation state. One area of production field in sub catchment one which is part of the rehabilitation area was identified as requiring changes in its drainage layout so that it drained to a different discharge point at sub catchment two. However this is considered a small area and the changes in flow are not estimated to be significant. Similarly, the effect of reducing or turning off the pumps at discharge points could result in raised water levels and a transfer of water across sub-catchments leading to increased runoff through other discharge points. This would be a low risk provided the alteration to the pumped discharge points allow for continued discharge and for ponding within the bog if necessary to store the runoff. In the absence of a full pre and post rehabilitation runoff model and a precautionary approach has been adopted to ensure that all drainage infrastructure from the bog is retained and is fit for purpose.

### 3.2.3 Low Flow Assessment

A low flow risk assessment was completed to identify whether any discharge locations from the bog are at high risk of low flow during periods of low rainfall and high evapotranspiration. While it is anticipated that rehabilitation will generally lead to dampening of peak flows and support sustained flows during dry periods, there is a potential risk that during prolonged dry periods that the rehabilitation measures may lead to downstream watercourses drying out as a result of increased infiltration, increased rates of evapotranspiration along with the additional storage capacity created within the bog.

A high level risk assessment was carried out to identify the particular discharge locations where this may be a risk. The following are considered the key factors that are most likely to influence the risk of drains previously unaffected experiencing low flow:

1. The contributing catchment area to each discharge location (as this is one of the main factors that will influence the range of flow rates);
2. The intensity of the rehabilitation works within the catchment (both in terms of measures proposed and proportion of the catchment undergoing rehabilitation)

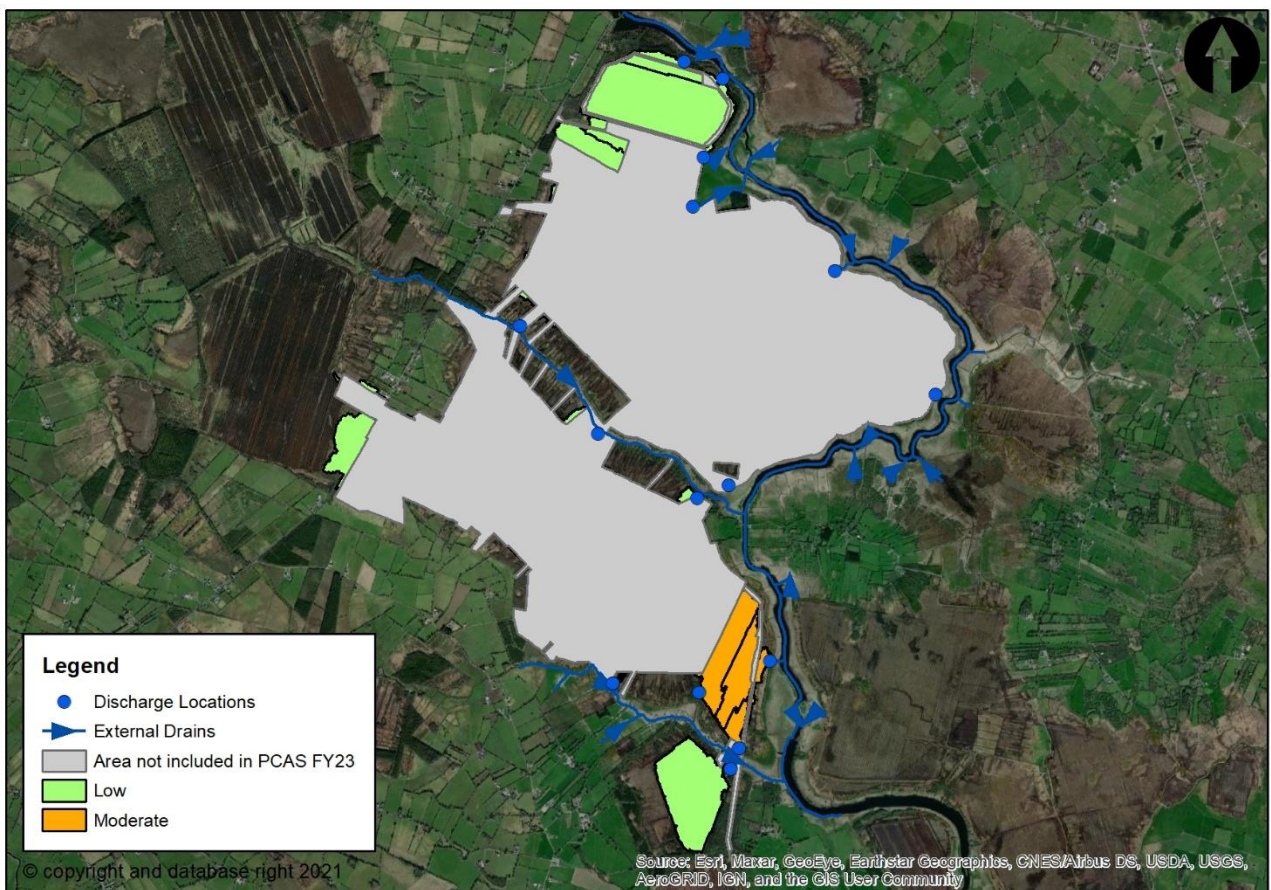
The larger the contributing catchment area it is considered less likely that a drain will be to dry out, while the more intensive the rehabilitation works the more likely a drain will be to low flow. In order to simplify the risk assessment process three risk categories (High, Moderate and Low) were identified for catchment area and restoration intensity based on experiences from other bogs where this issue has occurred. For rehabilitation intensity the proportion of the catchment area undergoing rehabilitation was used as an indicator of risk. The overall risk category assigned is determined based on Catchment area risk multiplied by Rehabilitation intensity risk as summarised below:

**Table 3-2 Parameters of Catchment Low Flow Risk**

Risk category	Catchment area (ha)	Rehabilitation intensity (% of catchment area)	Overall risk category
Low (1)	>20	<30%	Low (1-3)
Moderate (2)	5-20	30-60%	Moderate (4-6)
High (3)	<5	>60%*	High (7-9)

\*Note: Rehabilitation intensity (% of catchment area) capped at Moderate for where the rehabilitation measure only involves drain blocking on vegetated high bog (MLT2)

Where any discharge locations are identified as high risk, it is recommended that Bord na Móna undertake a review of the drainage channel downstream of the bog to identify the potential impact to the land owners.



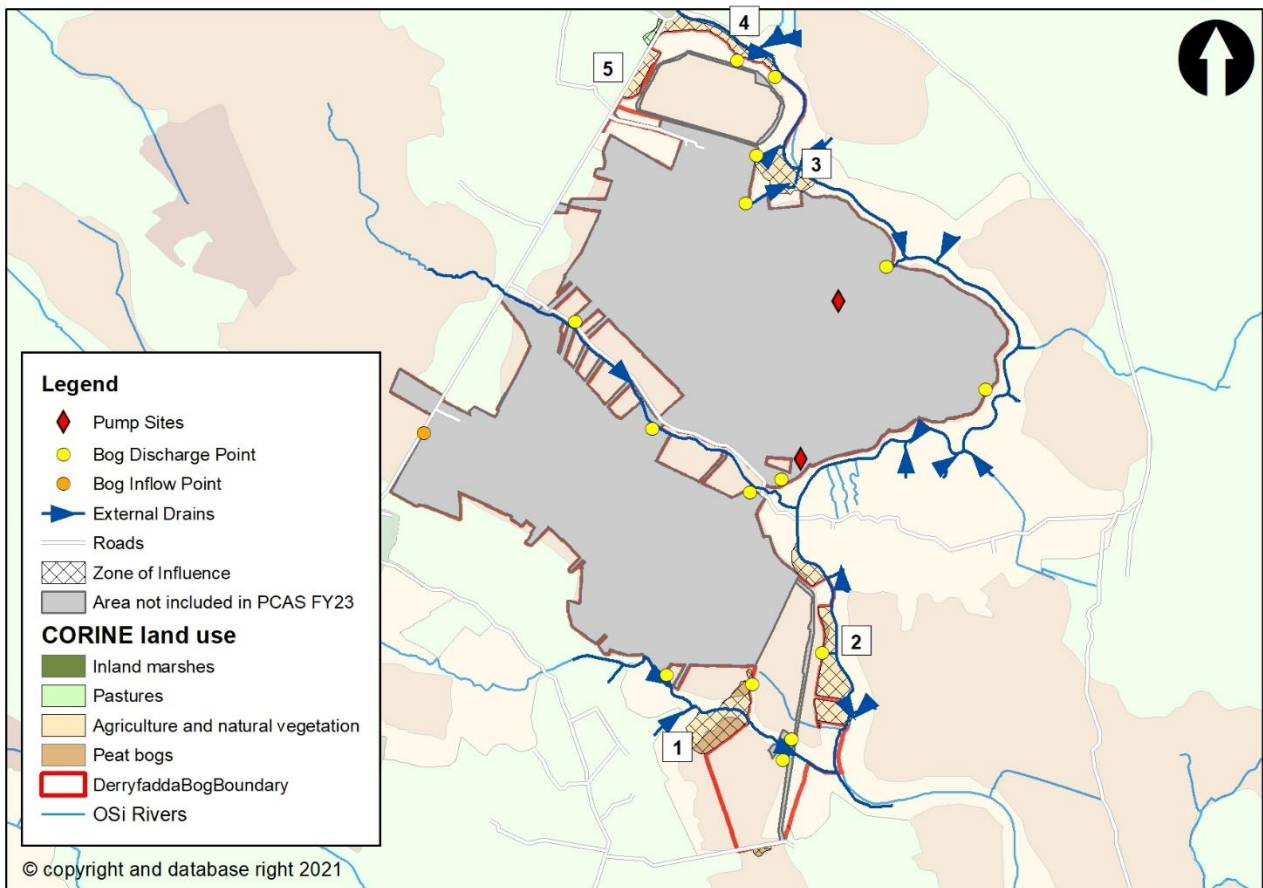
**Figure 3-4 Overall Catchment Risk**

Through assessing the catchment areas and rehabilitation intensity, two catchments were classified as moderate risk and thirteen were classified as low risk. One high risk catchment was identified however given that it immediately flows to the Lughanagh 010 stream, which covers a larger catchment area the risk of low flow is reduced and the catchment has been reclassified as moderate.



### 3.3 Potential Risk Areas

The following assets have been identified as being at potential risk from flooding or wetter conditions as a result of measures described in Table 3.1 being implemented.



**Figure 3-5 Derryfadda Bog Rehabilitation Plan- Assets at risk**

The assets at risk are set out in Table 3.3 along with the vulnerability, based on the current landuse, of the asset. It should be noted that the appraisal of the assets at risk considers the consequences of flooding or wetter conditions, not the likelihood of flooding or wetter conditions occurring.

**Table 3-3 Assets at Risk**

Item	Asset	Vulnerability to flooding and/or wetter conditions
1	Peat and Agricultural land with natural vegetation	High Vulnerability. Agricultural land would become less productive should it be made wetter.

## REPORT

---

2	Agricultural land with natural vegetation	High Vulnerability. Agricultural land would become less productive should it be made wetter. These areas are also designated SPA's and no activity should adversely impact this area.
3	Agricultural land with natural vegetation	High Vulnerability. Agricultural land would become less productive should it be made wetter. These areas are also designated SPA's and no activity should adversely impact this area.
4	Woodland	Low Vulnerability. Woodland could tolerate wetter conditions.
5	Agricultural land with natural vegetation	High Vulnerability. Agricultural land would become less productive should it be made wetter.
6	Roads	Low vulnerability. Road level slightly higher than surrounding land. Risk of flooding is low.

---

In addition to the above risks there is a general low risk that should degradation of the bog boundary occur surface water could be released into adjacent lands.

## 4 OBJECTIVES

The overarching objective of the Derryfadda Drainage Management Plan is to facilitate the rehabilitation of bog through management of potential adverse impacts to adjacent land and waterbodies. SMART<sup>2</sup> objectives were developed for the Drainage Management Plan that provides direction for the overarching objective. These objectives consider constraints, risks and opportunities that were identified in chapters 2 and 3 and are detailed as follows:

1. To manage potential water table impacts between adjacent land and Derryfadda bog during and after rehabilitation measures.
2. To maintain or reduce flows released from the bog at the discharge locations.
3. To manage sediment entering the River Suck during and after rehabilitation, these measures are to ensure compliance with current discharge limits in IPC Licence.

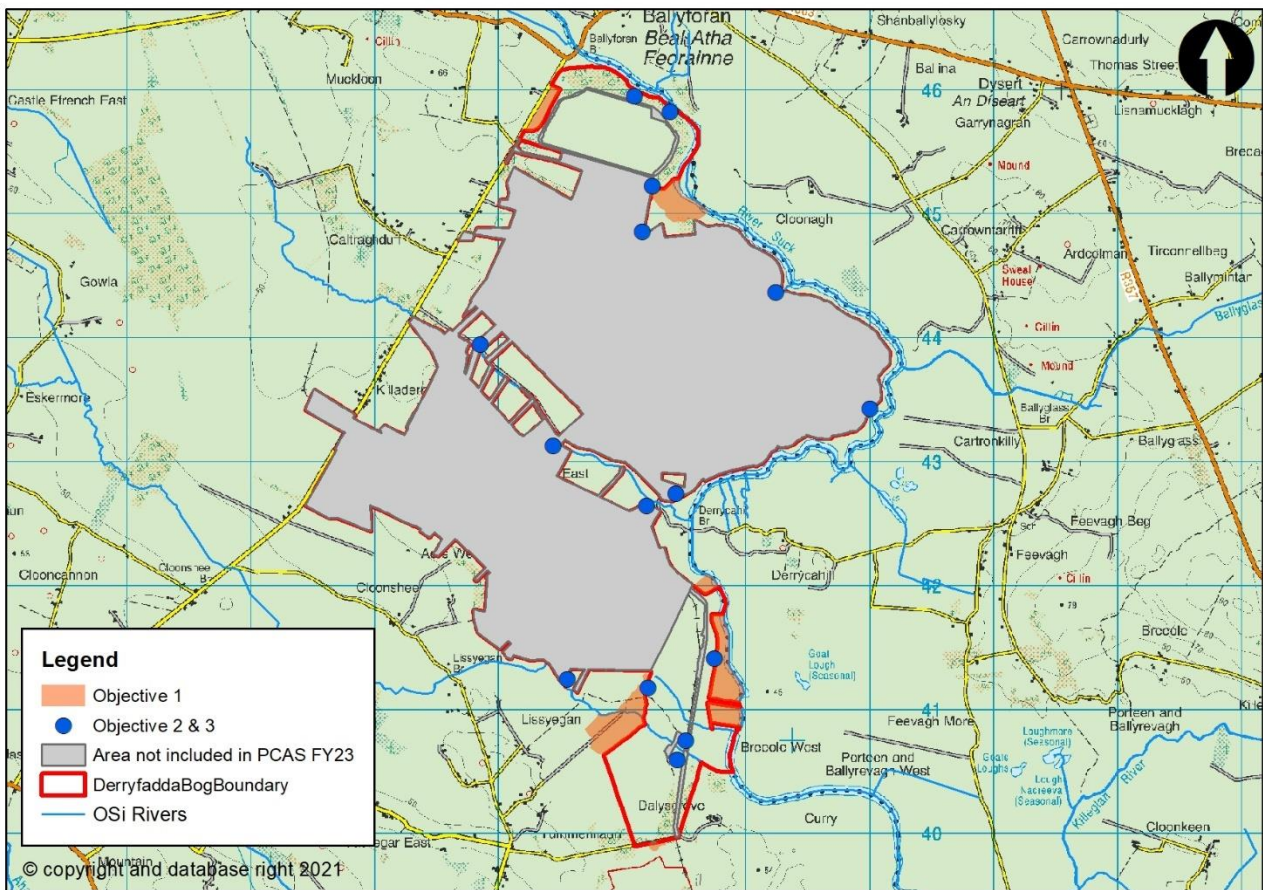


Figure 4-1 Derryfadda Bog DMP objectives

<sup>2</sup> SMART – Specific, Measureable, Achievable, Relevant, Time bound

## 5 DRAINAGE MANAGEMENT MEASURES

### 5.1 Key Drainage Features

Drainage management measures were identified in relation to the objectives set in chapter 4 and are described below. Objective 1 considers the potential impact to adjacent land from water table rise. Objectives 2 and 3 consider the control mechanisms to flow discharging from the bog.

An assessment was carried out to identify the existing key drainage features available to meet the objectives set. Figure 5.1 presents the key drainage features identified. It can be seen in the figure that for water table level rise to be managed between the bog and adjacent land that a hydraulic break will be required where available. To ensure that the flow and sediment discharging from the bog is managed the discharge control points will need to be maintained.

Outside the Bord na Móna bog boundary key external drains were identified. These drains are hydrologically connected to the bog drainage network. While no drainage issues were identified along these external drains, see section 2.4, a risk of sediment deposition was highlighted from sources outside the bog. The maintenance of the existing silt ponds will mitigate the risk of sediment deposition arising from rehabilitation. Post implementation of the measures there will be in general a reduction in risk of sediment/silt escape once the bog reaches environmental stabilisation. It is noted that sediment deposition in the external drains could impede the drainage of the bog and adversely impact adjacent lands.

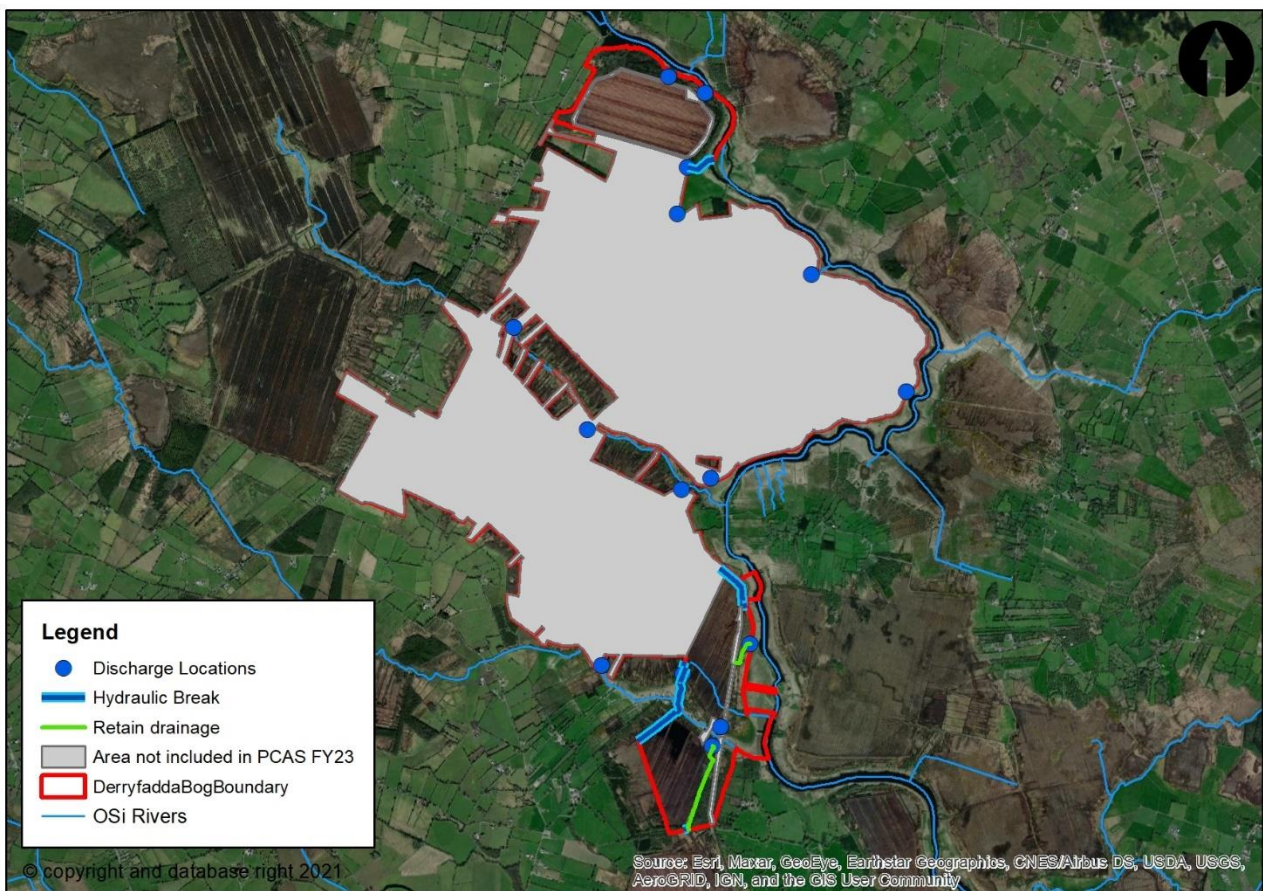


Figure 5-1 Key drainage features for Derryfadda Bog

When identifying measures to provide the key drainage features a review was carried out of the drains. LiDAR, topographical surveys and local knowledge from Bord na Móna operatives were used in this review. While the review gave a good indication of the key drainage features' performance it is acknowledged that gaps in information or changes to features post survey could change the expected performance. Derryfadda Drainage Management Plan therefore outlines a suite of responsive measures taking into account such factors as robustness and ongoing on-site observations. The Drainage Management Plan would therefore allow the bog to be managed and adapted as the rehabilitation plan progresses and is retained in the future. The following sections describe the suite of measures that can feasibly be implemented for the Derryfadda Bog Drainage Management Plan.

### **5.1.1 Boundary Drains**

Boundary drains can provide hydraulic breaks between the bog and adjacent land, see Figure 5.1. In most areas of the Derryfadda Bog where hydraulic break would be required there are existing boundary drains. Available information indicate that these drains are suitable to provide hydraulic breaks and can be designated as such and retained in the future. Observing and recording the suitability of the boundary drains is recommended and where they are found to be not functioning as predicted upgrade works will be required. This would involve modification of the drain to make them larger/deeper/wider/steeper. This may be only in specific locations along the drain or an entire reach may require upgrading. Where there is no boundary drain present a new drain can be excavated in order to create the hydraulic break required. In these cases a channel of specified dimensions and slope will be required and where possible will not extend into the mineral soils (See section 3.2.1).

### **5.1.2 Bog Rehabilitation Modification**

Where a boundary drain is not suitable to act as a hydraulic break or where none exists it may be possible to review the bog rehabilitation plan to provide the required mitigation measure. This can take the form of sacrificing rehabilitation of the last peat field, or equivalent rehabilitation area, closest to the adjacent land where an existing field drain could provide the hydraulic break function. The field's drainage network would be retained keeping the water table to current conditions and providing a water table cut-off in relation to the adjacent land.

In areas zoned as wetland within the rehabilitation plan control of the water levels may be required. Where there is a potential backwater into adjacent lands or where raised water levels could potentially raise water levels on adjacent lands setting a maximum control water level may be required. This control level will allow water to drain freely from the wetland area although water levels may rise higher than the control level during flood conditions.

### **5.1.3 Maintenance of Discharge Points**

Existing silt ponds are located upstream of the bog discharge points. They help regulate the flow and ensure that's suspended solids are settled in the pond, maintaining compliance with the emission limit values regulated

by the EPA. Bord na Móna have legal responsibility to maintain these silt ponds and ensure their proper functioning capacity under the existing IPC Licence (Ref. P0502-01).

If alterations occur where no silt point exists upstream of a discharge point and no subsequent silt pond will be utilised before flow would leave the bog alternative silt control measures will be required. This can include blocking and or diverting the discharge point so that the relevant sub-catchment of the bog drains to a different discharge point with a silt pond. The rehabilitation plan can be adapted where required to allow proposed wetlands to act as a silt control measure.

Where discharge points are aided by the use of pumps but they are being proposed to be turned off as part of the rehabilitation plan, a re-configuration of the discharge point will be required. Pipes and drains may need to be lowered to a level to allow discharge under gravity or the gravity drainage function downstream of the pump can be utilised which will dictate water depths. This level will be determined by the required bog rehabilitation plan and the avoidance of water filling the bog and spilling at unintended locations.

### 5.1.4 Monitoring

As mentioned above DMP measures were selected based on level of certainty and on-site observations. The most appropriate measure was selected from a suite of measures representing varying levels of intervention. Monitoring of the measure and adjacent land will be required prior, during and after the rehabilitation measures. A monitoring programme can be implemented to observe the impact from the bog rehabilitation to the adjacent land. Monitoring would be observational where the condition of the asset in question is assessed in relation to present day conditions accounting for seasonal variability. Where negative impacts are observed other measures can be implemented that will establish a hydraulic break or other feature with the same functional requirement. Otherwise monitoring should continue until environmental stabilisation.

## 5.2 Identification of Measures

The following section along with Figure 5.2 and Table 5.1 lists and describes the DMP measures for Derryfadda Bog.

DMP 1. The boundary drains identified in Section 5.1 as key drains are proposed to act as hydraulic breaks. The boundary drains' ability to carry out this function is dependant on their condition and being free draining. Section 2.6 indicates how all boundary drains appear to be functioning sufficiently with no known drainage issues identified along the drains or in adjacent lands.

Topographical surveys, LiDAR and anecdotal evidence suggests that the boundary drains identified for retention are functional and can be used as drainage management measures. They would therefore be suitable to act as hydraulic breaks provided they are retained with their current estimated carrying capacity. If issues are identified during walkover surveys, a higher level of intervention, drain upgrade, can be applied in these locations.

DMP 2. Existing silt ponds would be required to be maintained.

DMP 3. Upgrade a field drain along this boundary to allow for a hydraulic break between the bog and adjacent land.

DMP 4. No boundary drain exists here to provide a hydraulic break between the rehabilitation area and the adjacent land. An area can be excluded from the rehabilitation plan to allow parts of this area to be rehabilitated but also provided a buffer to the adjacent land. This along with the retained drain west of this area should prevent adverse impacts to the adjacent land.

DMP 5. DMP measures were identified to control water levels in the wetland areas. By ensuring water levels remain below set levels the risk of water flow across the bog into adjacent land and subsequent water table rise would remain low.

A review was carried out to ascertain where water would first spill from any proposed wetland area into adjacent land. The ground level at this location, minus 500mm to allow a freeboard, was used to determine a Water Control Level (WCL) in the wetland areas. Standing water would be allowed to pond up to the WCL before free discharge from the wetland would occur. This can be accommodated by DMP 5.

DMP 5 should be carried out in conjunction with DMP 1, the retention of boundary drains.

The WCL is not prescribed as a target water level. It has been derived from the principle that under normal free draining conditions, which will generally align with summertime, the water level of the rewetted bog will not adversely impact adjoining lands. The optimal water depths for rehabilitation and the functioning of the drainage are designed, under normal free draining conditions, so that the WCL's are not exceeded controlling the potential water table level rise in adjacent lands.

It should be noted that during extreme flood conditions, that are beyond Bord na Móna's control, water levels in the wetland areas may rise above the invert of the outfalls as they regulate the discharge. The proposed wetland areas can be adapted to function as silt control measures before the relevant part of the bog discharges to the River Suck. A review of the internal drains would be required to ensure no drain bypass the wetlands.

The remaining measures are of low intervention consisting of maintaining the existing features or monitoring lands and features.

Table 5.1 list the DMP measures identified for Derryfadda Bog and where they sit within the suite of possible measures that could be taken.



Figure 5-2 DMP measures for Derryfadda Bog



**Table 5-1 Selection of DMP Measures**

Measures Item	Feature	Function required	Suite of measures Level of intervention			
			Low			High
1	Boundary drain	Hydraulic break	<b>Retain drain</b>	Upgrade drain	Maintain outside bog field	Create new drain
2	Silt ponds	Silt and flow control	<b>Maintain pond</b>	Upgrade pond	-	-
3	Boundary Drain	Hydraulic Break	Retain drain	<b>Upgrade drain</b>	Maintain outside bog field	Create new drain
4	Marginal Land	Buffer	-	-	<b>Retain drains in area of bog</b>	-
5	Wetland	Water level control	-	<b>Rehabilitation adaptation</b>	Exclude from rehabilitation plan	-

### 5.3 Interaction with Monitoring Plan

As part of the bog rehabilitation plan groundwater level monitors have been installed at Derryfadda Bog. These monitors will record water table and groundwater levels over the coming months. It will therefore be possible to ascertain if the water table is rising within the bog following the implementation of the rehabilitation plan.

This data should be considered during the monitoring measures of adjacent land. When water table levels are known to be rising within the bog, monitoring of the adjacent land (as described in Section 5.1.4) should take place on a more regular basis to ascertain if impacts to lands outside the bog are observed.

### 5.4 Residual Risk & Limitations

The level of flood risk to the bog and the surrounding lands has been shown to be low (Section 2.6) generally but with small areas of the bog susceptible to poor drainage and flooding. The impact of the proposed rehabilitation measures will generally be to reduce runoff from the bog but this will lead to increased water table levels and surface water flooding in the bog itself. During flood events no increase in flood risk is envisaged as a result of the rehabilitation measures. During normal low flow regime the Drainage Management Plan seeks to identify the measures that should provide a hydrological cut off between the bog and the surrounding lands.

As indicated in previous sections there are limitations to the assessments associated with the drainage network both within the bog and outside. Factors such as flow estimations of small catchments, lack of survey data limiting drain capacity estimations and high level definition of soil porosity all contribute to these limitations. Nevertheless the measures recommended represent a pre-cautionary approach based on conservative assumptions.

The DMP measures proposed set a baseline approach and a suite of measures in any given location has been provided. This will facilitate a reactive approach to be taken if required. In the event that a measure not be operating efficiently a higher intervention measure can and will be implemented. This will allow Bord na Móna to identify the most appropriate measure while proceeding with drainage function uncertainties.

### 5.5 Climate Change Adaptability

There is high uncertainty in relation to the effects of climate change, particularly in how it may manifest in terms of small catchment runoff. Ireland is predicted to have drier summers and wetter winters. The most appropriate guidance in an Irish context can be found in the OPW's Flood Risk Management Climate Change Sectoral Adaptation Plan<sup>3</sup>. For the Mid-Range Future Scenario, representing a central emissions estimate on a 100 year time horizon, it is recommended that allowances for peak flow and rainfall are increased by 20%. If such increases in runoff are realised over the timeframe of establishment of rehabilitation measures this could lead to a perception that bog rehabilitation measures at Derryfadda are the cause of increased flood risk.

---

<sup>3</sup> Accessed on 10/12/2020 at

<https://www.gov.ie/pdf/?file=https://assets.gov.ie/46534/3575554721374f7ab6840ee11b8b066a.pdf#page=1>

## REPORT

---

It is anticipated however that the rehabilitation measures will lead to reduced peak runoff as the water storage function of the bog is increased. This will serve to regulate peak runoff in winter and potentially smooth out the flows in drier periods, essentially acting against the anticipated effects of climate change.

It is therefore anticipated that the bog rehabilitation measures themselves will provide the mitigation of the effects of climate change on runoff and no additional measures will be needed. There are unknowns however in the effectiveness of the rehabilitation measures in this regard and also the severity of climate change impacts. Continued monitoring of the adjacent lands is therefore also crucial to gauge the effectiveness of the bog rehabilitation measures in mitigating these climate change impacts.

## 6 SUMMARY OF DRAINAGE MANAGEMENT PLAN

The Drainage Management Plan for Derryfadda consists of a series of measures to be implemented at different stages of the rehabilitation process. Drains along the boundary were identified as hydraulic breaks in order to mitigate against any potential impacts from the bog rehabilitation measures. The effectiveness of all drains acting as hydraulic breaks is dependent on their ability to convey flow which have been outlined in Section 5.1 and deemed suitable subject to the measures recommended. Factors such as channel size and slope will determine this along with any downstream feature which may control water levels. The external drains which these boundary drains discharge into are also key drainage features that will affect the operation of the drainage network.

Measures will range from low intervention to high and consist of monitoring, retention of existing features, and upgrading features. Maintenance of measures are proposed to the silt ponds within the bog to ensure that discharge from the bog and sediment is controlled. This is a legal obligation for Bord na Mona and will continue at all existing silt ponds.

Monitoring of adjacent land is included in the plan. The monitoring will observe agricultural land, adjacent bog, and woodland for adverse impacts from the bog rehabilitation. In the event that adverse impacts are confirmed, higher intervention measures can and will be implemented to mitigate the impacts.

Monitoring measures will therefore be ongoing during and after the bog rehabilitation measures. Continued retention and maintenance of the key drains and silt ponds will also be required after the bog rehabilitation measures. Throughout the process landowner engagement is recommended to ensure both the rehabilitation plan and Drainage Management Plan are understood and to promote collaborative working to manage impacts as they arise.

**Table 6-1 Drainage Management Plan**

Measures required PRE bog rehabilitation measures	Measures required DURING bog rehabilitation measures	Measures required POST bog rehabilitation measures
Landowner engagement if required via community liaison	Landowner engagement if required via community liaison	Landowner engagement if required via community liaison
Retention of boundary drains (see section 5.1.1)	-	-
-	Wetland water level control (see section 5.1.2)	Wetland water level control (see section 5.1.2)
Monitoring boundary drains (section 5.1.4)	IF REQUIRED – Consideration of need for higher intervention measures	-
-	Upgrade discharge point (see section 5.1.3)	-
Maintenance of discharge points (see section 5.1.3)	Maintenance of discharge points (see section 5.1.3)	Maintenance of discharge points (see section 5.1.3)
Monitoring of adjacent land (see section 5.1.4)	Monitoring of adjacent land (see section 5.1.4)	Monitoring of adjacent land (see section 5.1.4)

**REPORT**

---

-

-

IF REQUIRED – boundary drain  
upgrades (see section 5.1.1)

---

-

-

Retention of key drains and pipes

---