

BORD NA MÓNA – BLOOMHILL BOG

Drainage Management Plan



IBE1933
Rp21
March 2022

REPORT

Document status

Version	Purpose of document	Authored by	Reviewed by	Approved by	Review date
D01	Draft	Various	Francis Mackin	Grace Glasgow	07/03/2022

Approval for issue

Grace Glasgow



7 March 2022

The report has been prepared for the exclusive use and benefit of our client and solely for the purpose for which it is provided. Unless otherwise agreed in writing by RPS Group Plc, any of its subsidiaries, or a related entity (collectively 'RPS') no part of this report should be reproduced, distributed or communicated to any third party. RPS does not accept any liability if this report is used for an alternative purpose from which it is intended, nor to any third party in respect of this report. The report does not account for any changes relating to the subject matter of the report, or any legislative or regulatory changes that have occurred since the report was produced and that may affect the report.

The report has been prepared using the information provided to RPS by its client, or others on behalf of its client. To the fullest extent permitted by law, RPS shall not be liable for any loss or damage suffered by the client arising from fraud, misrepresentation, withholding of information material relevant to the report or required by RPS, or other default relating to such information, whether on the client's part or that of the other information sources, unless such fraud, misrepresentation, withholding or such other default is evident to RPS without further enquiry. It is expressly stated that no independent verification of any documents or information supplied by the client or others on behalf of the client has been made. The report shall be used for general information only.

Prepared by:

RPS

Mark Wilson
Senior Engineer - Water Environment and Flood Risk
Management

Elmwood House
74 Boucher Road, Belfast
Co. Antrim BT12 6RZ

T +44 2890 667 914
E mark.wilson@rpsgroup.com

Prepared for:

Bord na Mona

Padraig Naughton
Civil Engineering Manager

Boora, Leabeg, Tullamore
Co Offaly

T +353 87 622 7524
E Padraig.naughton@bnm.ie

Contents

Executive Summary.....	1
1 INTRODUCTION	3
2 BASELINE ASSESSMENT	5
2.1 Study Area.....	5
2.2 Catchment Runoff Characterisation	6
2.3 Hydrogeological & Soil Characterisation.....	8
2.4 Morphological and Hydraulic Characterisation	8
2.5 Land Use Character	9
2.6 Flood Risk	10
2.7 Summary	12
3 BOG REHABILITATION PLAN	14
3.1 Impact Screening	14
3.2 Impact Assessment	16
3.2.1 Water Table Impact	16
3.2.2 Increased Runoff	19
3.2.3 Low Flow Assessment	20
3.3 Potential Risk Areas	21
4 OBJECTIVES.....	24
5 DRAINAGE MANAGEMENT MEASURES.....	25
5.1 Key Drainage Features	25
5.1.1 Boundary Drains	26
5.1.2 Bog Rehabilitation Modification	26
5.1.3 Maintenance of Silt Ponds	26
5.1.4 Monitoring	27
5.2 Identification of Measures	27
5.3 Interaction with Monitoring Plan.....	30
5.4 Residual Risk & Limitations.....	30
5.5 Climate Change Adaptability.....	30
6 SUMMARY OF DRAINAGE MANAGEMENT PLAN	32

Tables

Table 2-1 Physical Catchment Descriptors of Sub-Catchments Draining the Bog	7
Table 2-2 Potential Opportunities / Constraints	13
Table 3-1 BRP measures proposed at Bloomhill Bog.....	14
Table 3-2 Parameters of Catchment Low Flow Risk.....	20
Table 3-3 Assets at Risk.....	22
Table 5-1 Selection of DMP Measures.....	29
Table 6-1 Drainage Management Plan	32

Figures

Figure 1-1 Location of Bloomhill Bog.....	4
Figure 2-1 Bloomhill Bog	5
Figure 2-2 Drainage Networks and Sub-Catchments Draining Bloomhill Bog	6
Figure 2-3 Morphological and Hydraulic Characteristics of Bloomhill Bog and Environs	9
Figure 2-4 Land use Characteristics of Bloomhill Bog and Environs	10

REPORT

Figure 2-5	Flood Risk at Bloomhill Bog	11
Figure 3-1	Bloomhill Bog Rehabilitation Plan- Zone of Influence	16
Figure 3-2	The effect of water table rise due to bog rehabilitation	17
Figure 3-3	Conditions affecting water table	18
Figure 3-4	Overall Catchment Risk	21
Figure 3-5	Bloomhill Bog Rehabilitation Plan- Assets at risk	22
Figure 4-1	Bloomhill Bog DMP objectives	24
Figure 5-1	Key drainage features for Bloomhill Bog.....	25
Figure 5-2	DMP measures for Bloomhill Bog	28

EXECUTIVE SUMMARY

Bloomhill Bog is located in Co. Westmeath and Co.Offaly, approximately 7km south of Athlone. Bloomhill Bog discharges via adjacent land drains west to the River Shannon, to the north to the Boor River, to the Curraghboy River and its tributaries which flows north and then west through the site, these are tributaries of the River Shannon. Areas of the bog to the North East and South West are constrained out of the FY23 scope.

The rehabilitation measures will generally result in reduced runoff and drainage from the existing peat fields through a mixture of techniques including wetland creation, drain blocking, cell bunding and re-profiling. It is assumed that these measures will not significantly alter the existing topographical catchments. water table rise, increased runoff from the bog and low flow risk.

Potential impacts were considered: the potential for changes in flows downstream and the potential for increased water table levels impacting adjacent lands. Observations from previous rehabilitation measures, which have returned peatlands to their natural water retention function, has shown a reduction in the downstream run off. Based on this evidence the rehabilitation of Bloomhill Bog will result in reduced downstream flows.

The potential for increased water table levels and to a lesser extent marginal alteration of the topographical catchments has been assessed based on a precautionary approach. The rehabilitation measures proposed for Bloomhill Bog will result in the creation of some wetland areas and it is expected that rehabilitated water levels will be higher than the peat field surface. In this scenario adjacent lands which are at a lower level than these parts of the bog could potentially be impacted. These vulnerable areas have been defined through a zone of influence approach.

The risk of low flow conditions in drains downstream of Bloomhill Bog was found to be low in all sub-catchments therefore no further assessment was recommended for Bloomhill bog.

Each of the land parcels have been assessed based on its vulnerability to increased water table levels within the bog. With a lack of suitable boundary drains in some locations to separate the rehabilitation area and potentially vulnerable lands, constraints to the bog rehabilitation plan were considered.

A summary of the key DMP measures that are required arising from the survey and analysis of the bog:

- Retention of existing boundary drains
- Maintenance of 6 existing discharge points with silt control
- Retention of 2 drains through the bog to ensure flow from adjacent land
- Upgrading a boundary drain to ensure it will function as a hydraulic break.
- Excluding the outer most production field drain in two locations from the rehabilitation plan so that it can act as a hydraulic break where a boundary drain doesn't exist.
- Creating two new drains one around 80m and one around 40m to ensure the production field drain to be retained flows easily out of the bog.
- Reducing the rehabilitation in two areas to minimal measures where no boundary drain exists.

REPORT

- Retention of a drain outside the boundary which will act as a hydraulic break where a water sensitive environment exists between the boundary and the drain.

In the event that the monitoring, which will be undertaken by BnM, identifies an adverse water table or drainage impact to adjacent lands in relation to present day conditions accounting for seasonal variability, a suite of measures can be chosen from and will be implemented to establish suitable mitigation. This approach accounts for unknowns and limitations inherent in this DMP study and provides a precautionary approach to drainage management.

1 INTRODUCTION

Bloomhill Bog is located in Co. Westmeath and Co.Offaly, approximately 7km south of Athlone, further site details are described in the Bloomhill Bog Site Characterisation Report 2022, thereafter referred to as the Characterisation Report. Bloomhill Bog is part of the Blackwater Bog Group. Bord na Móna operated peat extraction within the Blackwater Bog Group under IPC Licence (Ref. P0501-01) issued and administered by the EPA. Condition 10.2 of this licence requires the preparation of Bloomhill Bog- Cutaway bog decommissioning and rehabilitation plan 2022¹, thereafter referred to as the Rehabilitation Plan, for permanent rehabilitation of the boglands within the licensed area.

It is proposed by Government that Bord na Móna carry out enhanced decommissioning, rehabilitation and restoration under the Peatlands Climate Action Scheme on peatlands previously used for energy production. This proposed Scheme will significantly go beyond what is required to meet rehabilitation and decommissioning obligations under existing EPA IPC licence conditions. Improvements supported by the Scheme will ensure that environmental stabilisation is achieved and significant additional benefits, particularly relating to climate action and other ecosystem services, will also be delivered.

One of the key issues for Bord na Móna is the potential hydrological impact rehabilitation of this bog may have on the bog, surrounding lands and lands downstream which may be hydrologically linked to the bog. Rehabilitation measures generally seek to increase water table levels and surface water retention such that they are closer to the surface to encourage peat formation, the associated ecological benefits and carbon sequestration capacity. While in general terms this will reduce the volume of water released from the bog following a rainfall event, the impact on flood run-off is less predictable. Furthermore the increase in the local water table could result in negative impacts to surrounding lands if mitigation measures are not applied.

This Drainage Management Plan (DMP) for Bloomhill Bog seeks to establish the baseline hydrological performance of the bog and the surrounding drainage network. The plan sets out the characterisation of the bog and surrounding lands, the existing performance of the drainage network and the level of flood risk. The plan identifies the potential hydrological zone of influence of the bog and the objectives, risks and opportunities associated with the rehabilitation of the bog. The plan assesses the potential impact of the various rehabilitation measures which are proposed on the local drainage network and flood risk. It sets out, where necessary, mitigation measures required to reduce or avoid impacts. The plan sets out the measures which are required to be delivered in advance or in parallel with the rehabilitation plan as well as the long term operation and retention of the drainage network and associated infrastructure. The plan assesses the level of residual risk, the potential impact due to climate change and the adaptability of measures in response to these climate change impacts.

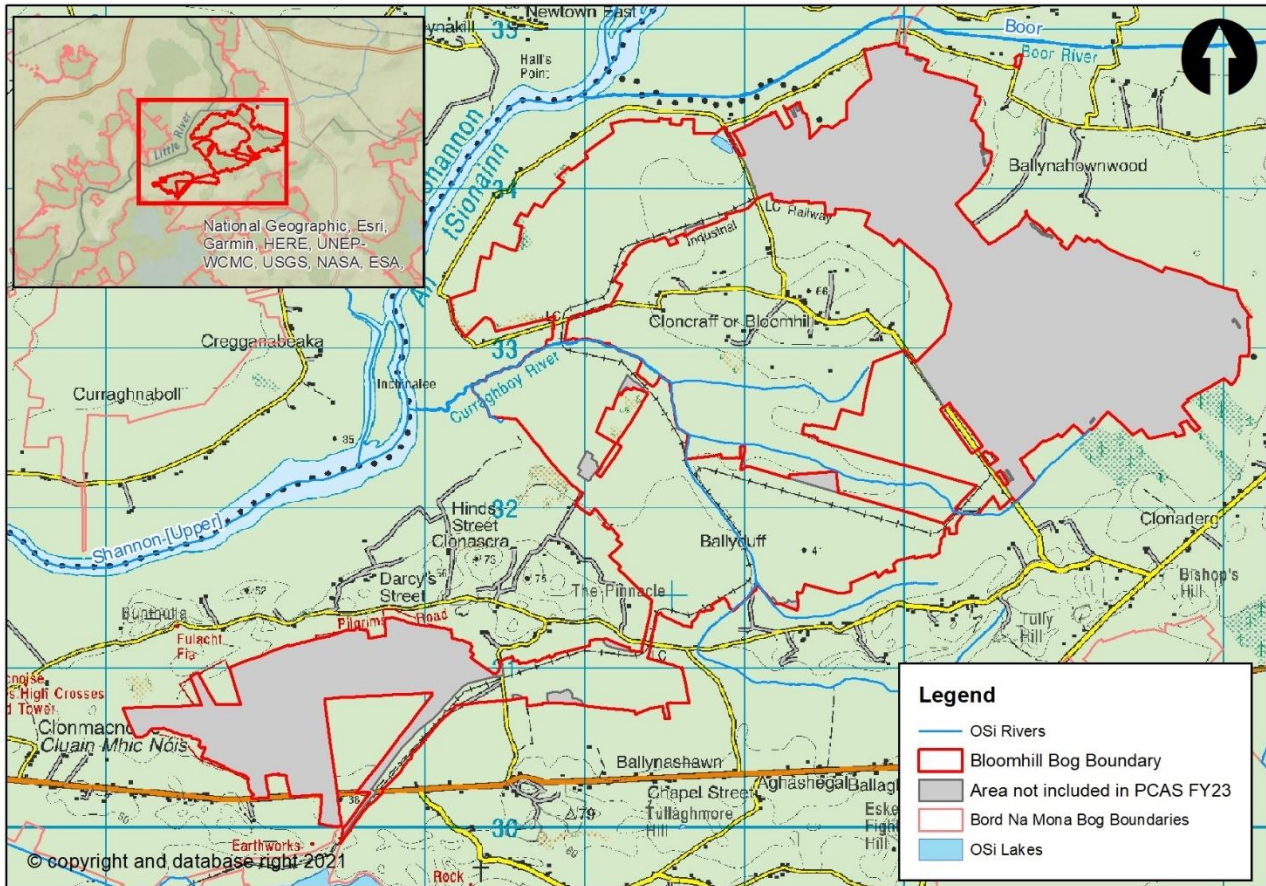


Figure 1-1 Location of Bloomhill Bog¹

¹ Further maps and figures can be found in the Bloomhill Bog GIS map book 2022

2 BASELINE ASSESSMENT

Through cessation of peat extraction and implementation of the Rehabilitation Plan there is the potential to hydrologically impact the adjacent land. The extent of the impact will depend on the existing baseline characteristics of the catchments which drain the bog and the adjacent lands.

The purpose of characterising the catchment area is to develop an understanding of how the catchment currently operates and drains. The characterisation also investigates the risks, constraints and opportunities to the operation and drainage.

2.1 Study Area

To characterise the catchments a study area was determined encompassing the total catchment area draining the bog. Bloomhill Bog discharges via adjacent land drains west to the River Shannon, to the north to the Boor River, to the Curraghboy River and its tributaries which flows north and then west through the site, these are tributaries of the River Shannon. A review was carried out to delineate the external drains around the bog as presented in Figure 2.1 along with their associated hydrological catchment area.

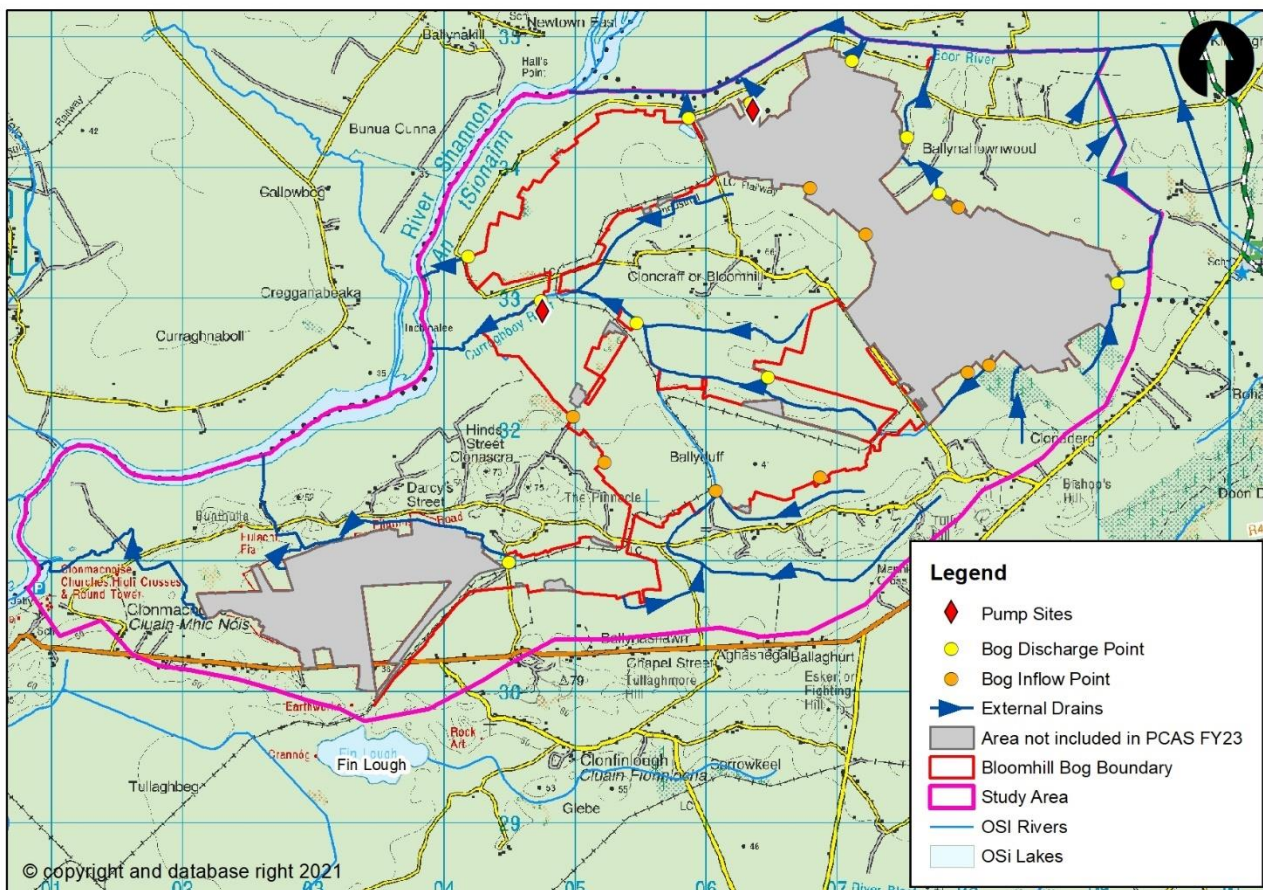


Figure 2-1 Bloomhill Bog

2.2 Catchment Runoff Characterisation

A hydrological analysis was carried out within the study area to delineate the sub catchments of the bog drains and the external drains. A recent survey of drainage was carried out by Bord na Móna and this was reviewed, and the bog sub-catchments confirmed. Sub-catchments of the external drains were identified using ARC GIS Hydrology tools. The sub catchments are presented in Figure 2.2.

The Flood Studies Update (FSU) catchment characteristics provide an overview of how much rain a catchment receives, how impermeable the catchment is and how quickly the water will runoff the catchment due to topography and drainage. Table 2.1 summarises the FSU catchment descriptors for the sub-catchments identified in Figure 2-2.

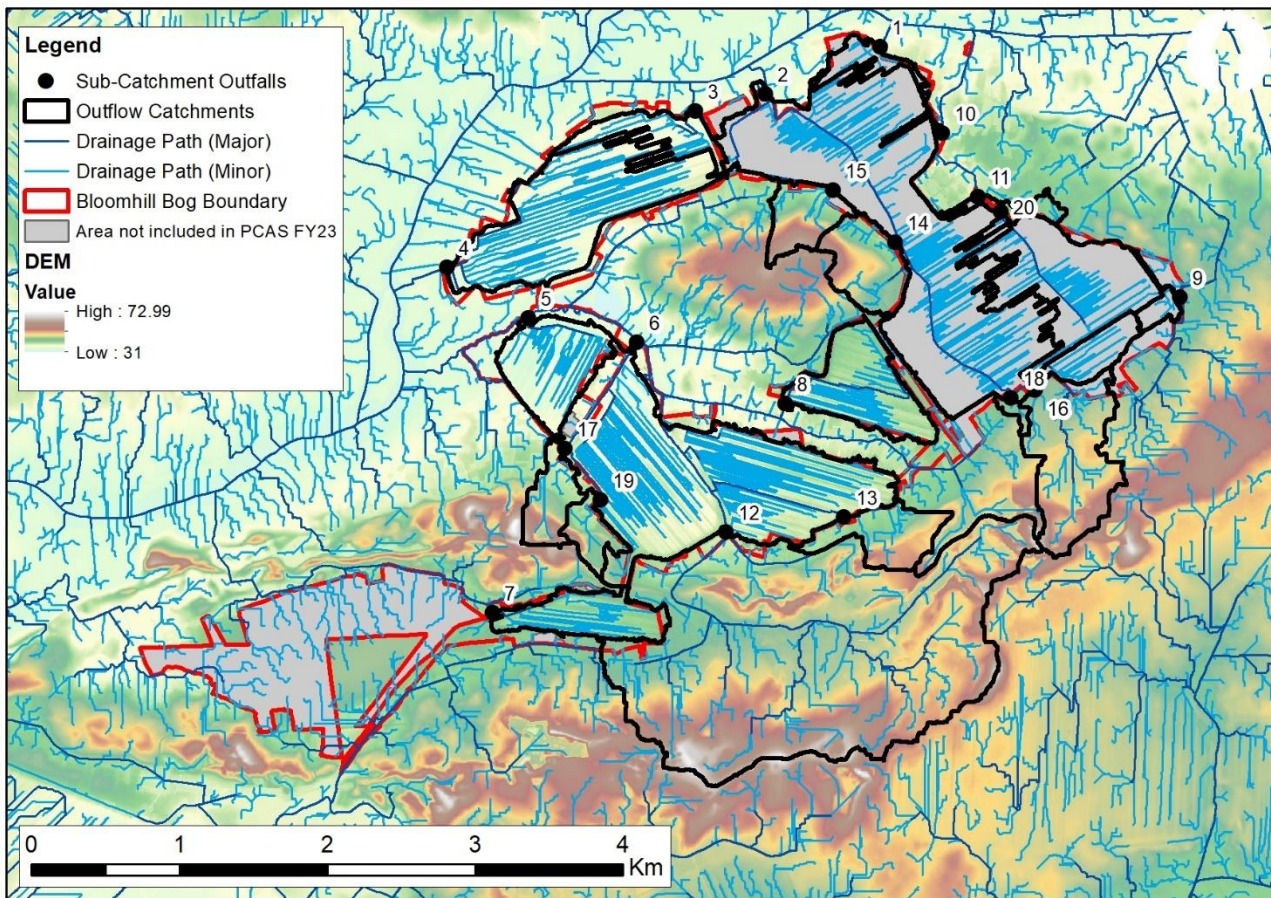


Figure 2-2 Drainage Networks and Sub-Catchments Draining Bloomhill Bog

There are eleven sub-catchments draining Bloomhill Bog and twelve inflow catchment (12-20 draining adjacent lands into the bog, catchments area ranging in area from 0.01km² to 4km². The catchments are subject to rainfall of 896 mm/year. The Baseflow Index for the catchments is 0.581 representing a moderate catchment permeability. The catchments range from very flat to moderately flat. This information is based on wider catchment characteristics and it is acknowledged that these will vary within the bog.

The Index Flood Flow (Q_{med}) values, which represent the typical peak flood flow which might be anticipated (a 50% chance of being exceeded in any given year), for each of the sub-catchments have been calculated. This is based on two different methods, the Flood Studies Update (FSU) 5 variable equation designed for small and

REPORT

/ or urbanised catchments in Ireland, and the RPS derived Peat Q_{med} equation, derived in support of the Drainage Management Plan project for SAC sites on behalf of NPWS. Both methods result in very similar Q_{med} values where the proportion of arterial drainage (ARTDRAIN2) is assumed to match the proportion of the catchment managed by Bord na Móna (i.e.drained).

Table 2-1 Physical Catchment Descriptors of Sub-Catchments Draining the Bog

Sub-Catchment Number	Area (km ²)	SAAR (mm)	BFI	FARL	ARTDRAIN2	PEAT (%)	S1085 (m/km)	FSU5 Q_{MED} (m ³ /s)	Peat Q_{MED} (m ³ /s)
1	0.10	897	0.581	1	0.000	100.0	0.001	0.004	0.022
2	3.24	897	0.581	1	0.000	84.4	2.981	0.747	0.485
3	0.22	897	0.581	1	0.000	100.0	0.001	0.008	0.043
4	0.89	897	0.581	1	0.000	100.0	0.486	0.143	0.154
5	0.38	897	0.581	1	0.000	100.0	2.458	0.099	0.075
6	1.21	897	0.581	1	0.000	84.2	3.938	0.322	0.205
7	4.40	897	0.581	1	0.000	50.7	3.131	1.004	0.634
8	0.67	897	0.614	1	0.000	66.4	2.527	0.160	0.116
9	0.43	897	0.581	1	0.000	100.0	0.492	0.073	0.081
10	0.05	897	0.581	1	0.000	100.0	2.556	0.016	0.013
11	0.96	897	0.581	1	0.000	100.0	2.439	0.232	0.168
12	0.67	897	0.581	1	0.000	100.0	1.511	0.146	0.121
13	3.40	897	0.581	1	0.000	34.2	3.027	0.785	0.506
14	0.25	897	0.581	1	0.000	49.2	4.296	0.077	0.052
15	0.28	897	0.581	1	0.000	56.1	5.040	0.089	0.057

16	0.20	897	0.581	1	0.000	44.9	1.704	0.049	0.042
17	0.57	897	0.581	1	0.000	55.6	4.449	0.166	0.106
18	0.18	897	0.581	1	0.000	44.8	13.036	0.074	0.039
19	0.03	897	0.581	1	0.000	100.0	22.063	0.015	0.007
20	0.12	897	0.581	1	0.000	43.8	13.008	0.052	0.028
21	0.05	897	0.581	1	0.000	100.0	1.316	0.012	0.012

2.3 Hydrogeological & Soil Characterisation

Full details of the hydrological and soil characterisation can be found in the Bloomhill Bog – site characterisation report 2022.

In summary, Bloomhill is primarily underlain by Ballysteen Formation and Navan Beds with a small area of Old Red Sandstone, all are classified as locally important aquifer which is moderately productive in local zones. Several bedrock faults can be observed in the surrounding areas including several that cross through the bog. No data exists concerning depth to bedrock, and there are no mapped exposed bedrock or karst features in the immediate vicinity of the bog.

Quaternary Sediment maps show the bog to be underlain by peat, yet surrounded by inorganic deposits, which are predominantly Alluvium to the west along the River Shannon, Gravel derived from Limestones to the south and Till derived from Limestones to the north and east. GSI Groundwater mapping indicates that there is generally moderate vulnerability in the surrounding area, although there are some pockets of extreme vulnerability. While Groundwater Vulnerability is typically used to indicate the susceptibility to groundwater pollution, it can provide a useful proxy indication of likely groundwater flow rates in the surrounding area.

2.4 Morphological and Hydraulic Characterisation

A desk top review was carried out of bog drains and external drains. Morphological and hydraulic features were identified.

The external drains are generally small with gentle bed slopes. Aerial photography shows no signs of erosion or deposition however, given that the drains are considered small with gentle bed slopes there would be a risk of deposition, and therefore reduced land drainage efficiency. Risk of deposition would occur where there is potential for an erosion or debris source from the surrounding land and where there is potential head loss in the channel due to instream features. Figure 2.3 details the reaches of the external drains where there are

potential erosion or debris sources and where instream features may facilitate deposition. The figure shows that due to the location of commercial forest, and peat in the surrounding lands outside of BnM ownership and control there are existing potential sediment sources that could enter the external drains. Given the presence of culverts, sharp bends, and inflows along the external drains there would be a potential of sediment settling and deposition occurring. The potential for Bloomhill bog being a sediment source to the external drains is considered low as all of the discharge points from the production fields have a silt pond present.

A review of the bog drains was carried out. The Bord na Móna drainage survey details the open drains, pipes, pumps, settlement silt ponds and discharge points. All of the discharge points from the production fields have a silt pond located upstream or pass through silt ponds located between outfall 5 and 6. These will reduce the amount of peat leaving the bog as water is drained. The drains in the bog have very gentle bed slopes and pass through numerous pipes before discharging from the bog. It is anticipated that the bog drainage network would be sensitive to drain and pipe alterations.

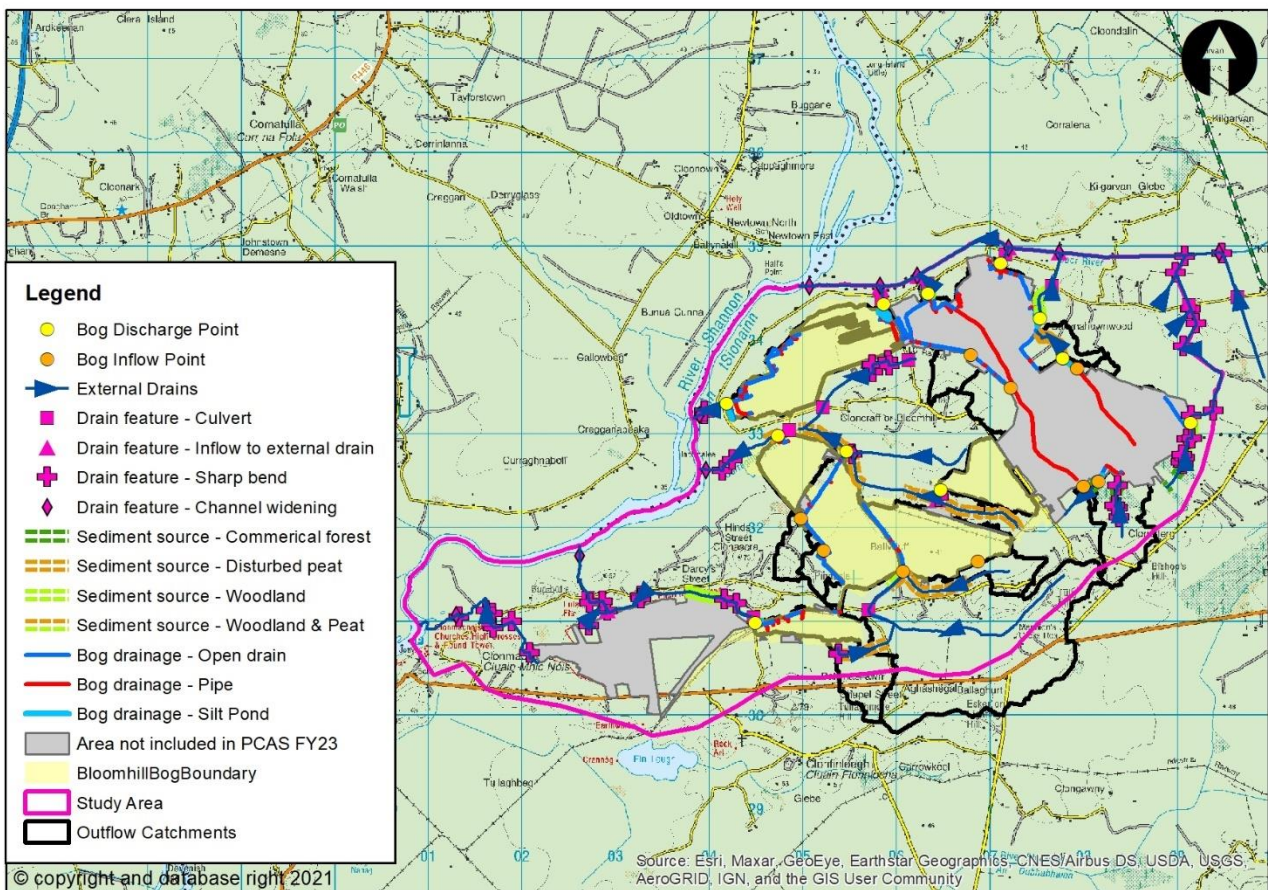


Figure 2-3 Morphological and Hydraulic Characteristics of Bloomhill Bog and Environs

2.5 Land Use Character

The majority of the land within the study area is peat bog. The remaining areas of the study area consist of pasture, mixed forest land and inland marsh. The CORINE land use dataset was used to identify land use types. This dataset was then reviewed using aerial photography to establish land use amendments or land

use alterations. The review found that there were additional areas of woodland, commercial forest and mineral extraction sites located in the study area. Minor roads and properties are located in the study area also.

The pasture land is mainly used for livestock which provides food production. The commercial forests provide for timber production. The peat bog outside of the Bloomhill bog boundary is privately owned. Other areas of peat bog are undisturbed which contribute to carbon storage and biodiversity. The area of the Bog to the south west which is not included in the FY23 rehabilitation scope is Mongan Bog SAC. The woodland areas are likewise providing carbon storage and biodiversity albeit as a different habitat to the peat bogs. The roads within the study areas service properties and provides access to the pastures, forests, peat bogs and amenities such as the pilgrim road walking route.

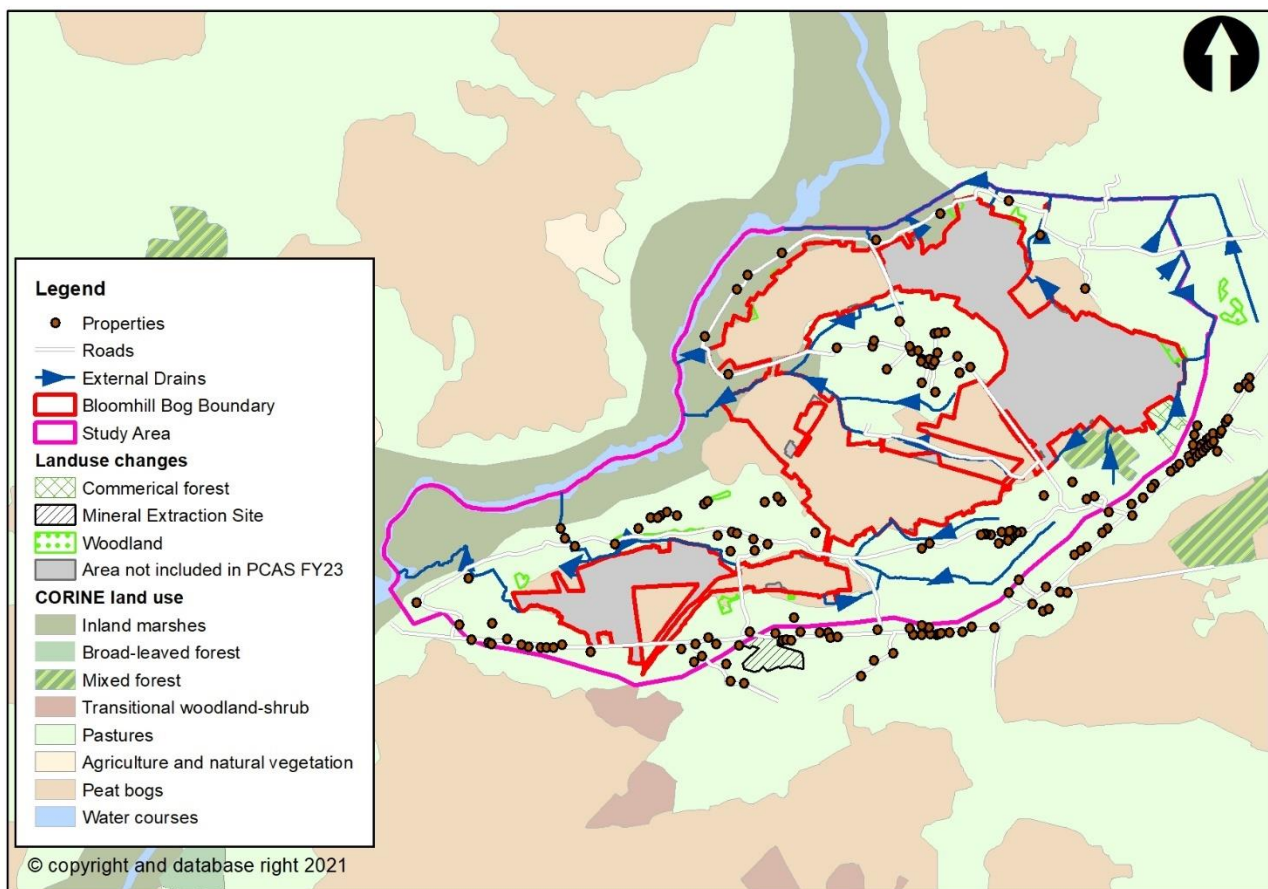


Figure 2-4 Land use Characteristics of Bloomhill Bog and Environs

2.6 Flood Risk

A number of sources of flood risk information are available, both predicted and simulated, in proximity to Bloomhill. These include:

- CFRAM Study maps setting out the predicted fluvial 10%, 1% and 0.1% Annual Exceedance Probability (AEP) fluvial flood scenarios
- GSI predicted water table flood maps for high, medium and low probability events

- Mapped fluvial flood extents for the 2009 flood event
- Mapped flood extents for the 2015 flood event (from Sentinel-1 satellite imagery) and a GSI surface water flooding dataset for the same event
- Anecdotal evidence from Bord na Móna

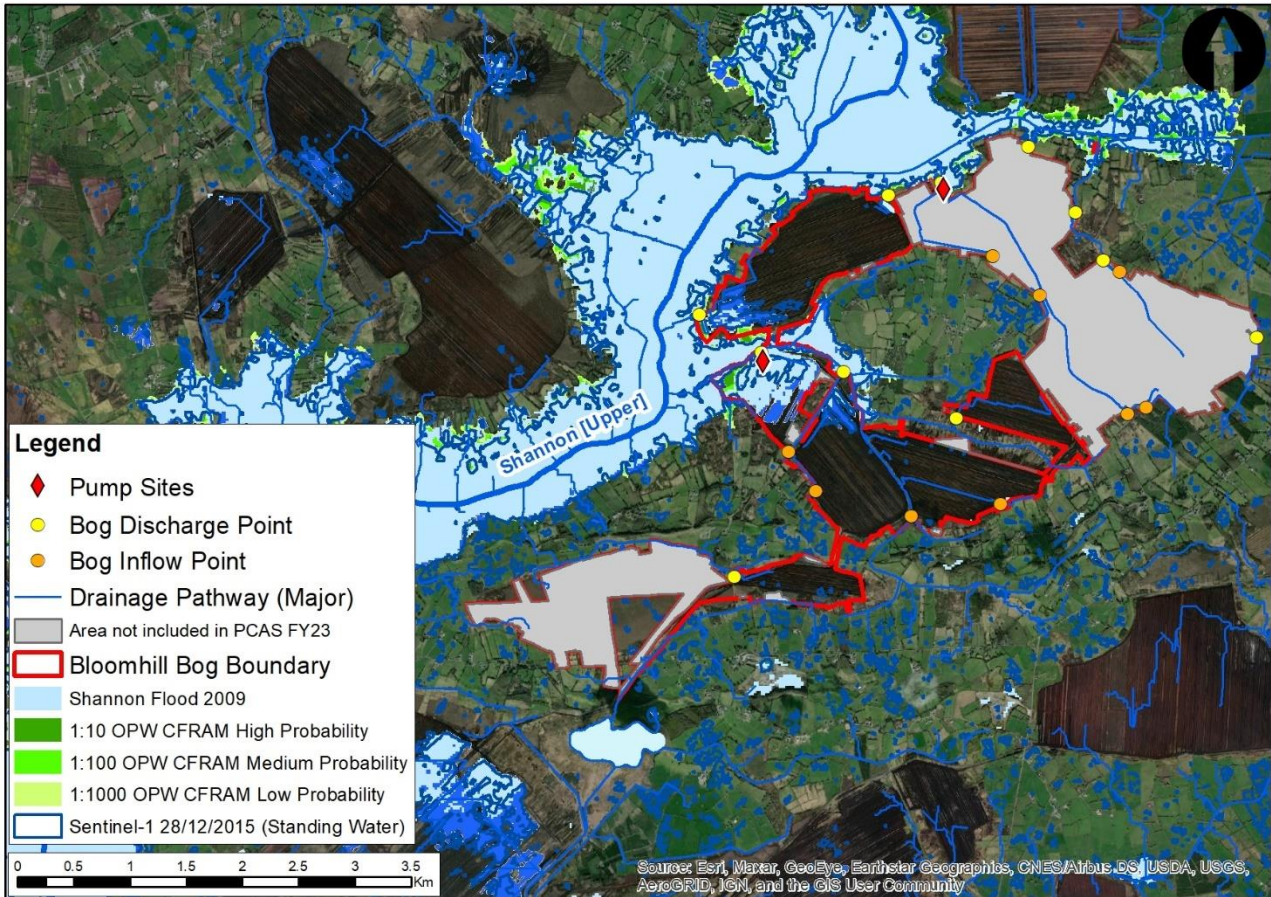


Figure 2-5 Flood Risk at Bloomhill Bog

The CFRAM maps show that areas of the Bloomhill bog are at risk of flooding from the River Shannon. It should be noted this analysis did not consider the fluvial flood risk from the smaller watercourses which drain the land adjacent to Bloomhill bog. This is supported by 2009 Shannon Flood event and the sentinel 2015 standing water data which indicates areas to the west which are at risk of flooding. This is consistent with the local knowledge from Bord na Móna operatives familiar with Bloomhill Bog.

Historical anecdotal evidence was reviewed to ascertain if there are any known flooding or drainage issues from these smaller watercourses to the bog or adjacent land. No drainage issues have been identified along the Bloomhill Bog boundary drains.

There is no predicted groundwater flooding to the bog indicated on the GSI datasets.

2.7 Summary

The drainage network sub-catchments within Bloomhill Bog and its environs were used to delineate the study area for the Bloomhill Drainage Management Plan. The overall catchment area was characterised within the context of hydrology, hydrogeology, morphology, landuse and flood risk.

A detailed drainage network delineation was carried out. Drains within the bog and external drains were identified. The assessment showed that Bloomhill Bog discharges via adjacent land drains west to the River Shannon, to the north to the Boor River, to the Curraghboy River and its tributaries which flows north and then west through the site, these are tributaries of the River Shannon.

The catchment area is considered to be relatively small, flat, moderate permeability with 897mm annual rainfall. Peak flood flows range from around 0.17-0.55 m³/s per square kilometre (1.7-5.5 l/s per hectare) for the Q_{med} event to 0.4-1.26 m³/s per square kilometre (4-12.6 l/s per hectare) for the Q₁₀₀ year plus climate change event.

The bedrock within the catchment (Ballysteen Formation, Navan Beds and Old Red Sandstone) may lead to high rates of groundwater flow. No karst features are located within close proximity to the bog, however several bedrock faults can be observed crossing the bog. The subsoil overlying the bedrock is Alluvium, Gravel derived from Limestones and Till derived from Limestones which are considered to have a moderate permeability.

The morphological and hydraulic characteristics of the external drains were assessed. No signs of erosion or deposition could be observed. Areas of deposition risk were identified along each drain. Culverts, bends, and inflows were identified as potential factors for sediment deposition. Commercial forest, woodland and peat adjacent to the drains were identified as potential sources of sediment. The potential for Bloomhill bog being a sediment source to the external drains during proposed PCAS activities is considered low due to the presence of silt ponds at all discharge point. In addition to the cessation of peat harvesting.

The land use was assessed within the study area. The majority of land is peat bog. The remaining areas of the study area consist of pasture, mixed forest and inland marshes. The land provides important services such as food production, timber production, carbon storage, industry, biodiversity and habitat creation.

Table 2.2 summarises the constraints, risks and opportunities identified as part of the baseline assessment.

Table 2-2 Potential Opportunities / Constraints

Land Parcel / Feature	Risk or Opportunity?	Details
Agricultural land	Constraint	It is important to maintain the productivity of agricultural land surrounding the bog
Peat bog	Constraint	The adjacent peatland is privately owned. Mongan Bog SAC is the within the constraint area south west of the bog and is owned by An Taisce. The impact from Bloomhill bog should be considered.
Roads	Constraint	Minor roads providing access to dwellings, agricultural land and peat bogs are located in the study area. Access to these roads should be maintained.
Rivers	Constraint	The River Shannon, Boor River and Curraghboy River are adjacent to Bloomhill Bog. No activity should adversely impact this area.
External drains	Risk	Risk of deposition in the drains is considered high due to potential sediment sources in adjacent lands and features within the external drains. External drains may be sensitive to change. Risk of reduced flows in drains.
Bog rehabilitation plan	Opportunity	To improve water quality discharging from the bog; stabilisation or improvement in water quality parameters (e.g. suspended solids)
Bog rehabilitation plan	Opportunity	To reduce carbon emissions from the bog and to set bog on a trajectory towards naturally functioning peatlands habitats. Bloomhill has potential to develop embryonic Sphagnum-rich vegetation that has potential to be a carbon sink.
Bog rehabilitation plan	Opportunity	To improve biodiversity by vegetating bare peat and creating more habitat for flora and fauna.
Bog rehabilitation plan	Opportunity	To reduce runoff and restore a more natural runoff regime, thus contributing to flood risk management.

3 BOG REHABILITATION PLAN

The measures identified for the bog rehabilitation plan are detailed in the Rehabilitation Plan report.

Each measure while designed to promote the rehabilitation and re-wetting of the bog will have a potentially positive and/or negative impact on the adjacent land. This section identifies and assesses these potential impacts.

3.1 Impact Screening

Table 3.1 summarises the rehabilitation measures proposed for the Bloomhill Bog and their potential impact to adjacent land.

Table 3-1 BRP measures proposed at Bloomhill Bog

BnM rehabilitation measure	Description	Potential Impact	Potential Impact Description
Drain blocking, berm, and field re-profiling,	Existing production field drains within the bog areas that convey surface water away from the former peat production fields towards the bog discharge points will be modified to reduce conveyance or removed altogether by infilling. Surface water runoff through the bog will be slowed allowing the bog to store more water	Positive and negative	Reduced runoff from the bog discharge points resulting in less flow in the external drains located downstream. Reduced conveyance at bog inflow point resulting in increased water volume in external drain located upstream if conveyance channels through the bog are blocked.
Blocking outfalls	Most production field drain systems drain into a headland pipe running perpendicular to the peat field. This intersection is known as an outfall. By blocking the outfalls each production field drain will be prevented from operating resulting in the ditch storing water and raising the water table level in the bog. This will allow the bog to store more water and bring the water table level to the surface.	Positive and negative	Reduced runoff from the bog discharge points resulting in less flow in the external drains located downstream. Raised water table levels to the bog surface will create a hydraulic gradient across the bog into the adjacent land. Water table levels in lands within this hydraulic gradient will potentially rise. The effect will be greatest immediately beside the bog.
Managing overflows with overflow pipes	This measure is usually combined with blocking outfalls which cause water table levels to rise. As the bog fills up it will want to overtop at the lowest part of the bog boundary. Overflow pipes control the location this occurs and where the overtopping water is discharged to.	Neutral	The control features will determine the location of the discharge from the bog. However the flow leaving the bog once it is full will be the same as prior to remedial works. Overall the volume of water discharging from the bog will be reduced but will contribute to raised water table levels within the bog

and potentially within the zone of influence (subject to mitigation).

Turn off or reduce pumping	Existing pumps that aid discharge flow from the bog would be turned off or reduced to reduce the discharge and promote the rewetting of the bog.	Positive and negative	Reduced runoff from the bog discharge points resulting in less flow in the external drains located downstream. Raised groundwater levels to the bog surface will create a hydraulic gradient across the bog into the adjacent land. Ground water levels in lands within this hydraulic gradient will potentially rise. The effect will be greatest immediately beside the bog. Unintended spill points may occur into adjacent land should water levels be allowed to rise.
Silt ponds	Existing silt ponds will be maintained to store runoff water from the bog and allow any suspended peat to settle out of the water before it is discharge to the external drains.	Neutral	Maintained capacity from the bog discharge points to the external drains and river located downstream. Maintained quality of water being discharged from the bogs into the external drains or river.
Wetland creation	Areas prone to flooding and depressions on shallow peat are designated for wetland creation. Shallow standing water will be allowed to occur resulting in increased water storage. Establishment of reeds and other rhizomes will form part of the wetland creation.	Positive and negative	Reduced runoff from the bog discharge points resulting in less flow in the external drains and river located downstream.

3.2 Impact Assessment

Three potential impact sources were identified; water table rise, increased runoff from the bog and low flow risk. These impact sources have the potential to make the adjacent land wetter and drain less efficiently or reduce water supply in adjacent drains. An assessment was carried out to delineate the zone of influence resulting from these potential impact sources. Figure 3.1 presents the areas which are at potential risk.

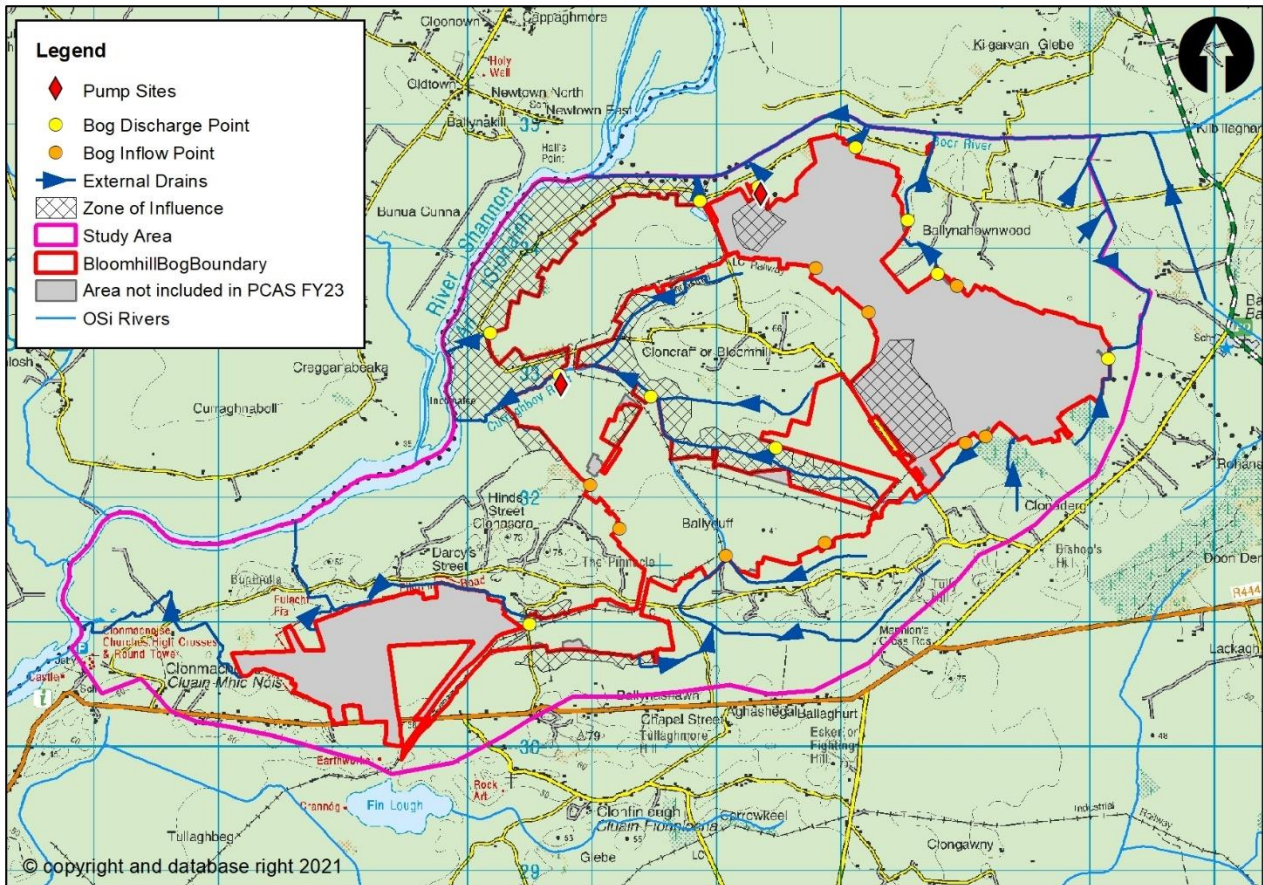


Figure 3-1 Bloomhill Bog Rehabilitation Plan- Zone of Influence

3.2.1 Water Table Impact

The impact of rehabilitation measures on water table levels within and adjacent to the bog is difficult to assess quantitatively in the absence of long term monitoring data and hydro-geological models of the bog. Nevertheless, it can be assumed that water table levels will rise within the bog itself given that this is an objective of the rehabilitation measures – to restore the hydrological conditions for peat formation. It can also be assumed that the maximum level which the water table will reach outside areas zoned as wetland is the surface of the peat fields post-rehabilitation. This is because topographical flow paths for surface water out of the bog (by gravity) will be retained and the bog is dependent on a pumping regime to drain surface water. The pump site to the north will remain active as it is outside of the FY23 rehabilitation scope however is will not act upon the rehabilitation areas as the sub-catchments are not linked. For areas zoned as wetland the maximum water level will be at or above surface level as shallow water ponding is promoted through rehabilitation measures.

The surface of the bog may lie higher or lower than the adjacent land. This relationship between the bog and adjacent land needs to be considered when assessing potential water table rise. Figure 3.2 shows these two relationship scenarios. Where the bog is lower than the adjacent land it would be expected that the water table would remain lower on the bog side even when the water table is raised to the bog surface. If wetland areas are created and the water level is raised above the surface it may result in higher levels than the water table in adjacent lands. In this case the presence of a boundary drain can act as a hydraulic break bringing the water table down to its original level and preventing a rise in the water table in the adjacent land. Where the surface level of the bog is higher than the adjacent land the risk of raising the water table in the adjacent land is greater. However, in this scenario the presence of an effective boundary drain will collect runoff from the bog and act as a hydraulic break bringing the water table back down and preventing a rise in the water table in the adjacent land.

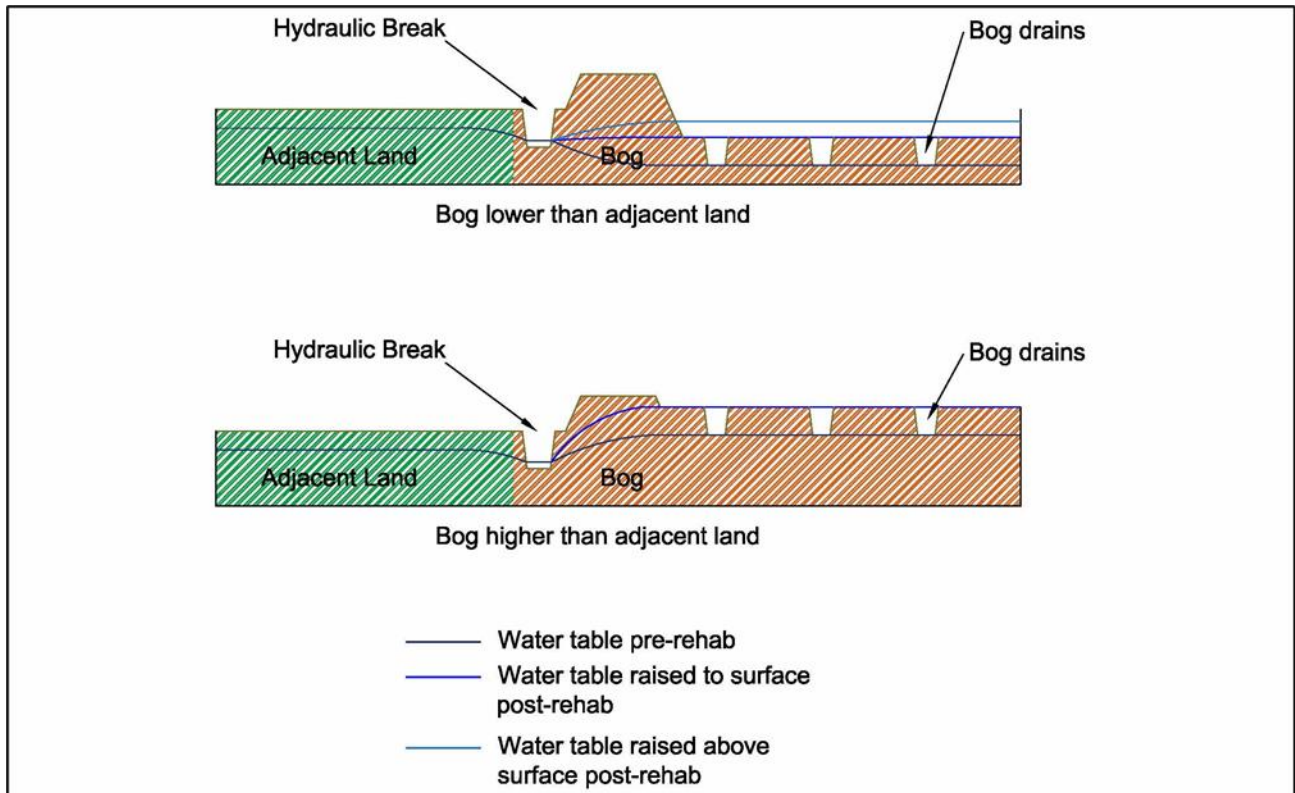


Figure 3-2 The effect of water table rise due to bog rehabilitation

For Bloomhill Bog the adjacent land lies lower than the bog in some locations, identified in Figure 3.1 as the Zone of Influence, and higher in other locations. Water table rise in lands adjacent to the Bloomhill was assessed firstly by estimating the potential rise in water table within the bog. The drainage system in the bog is typically 0.7m deep. It can be expected that the water table would rise by 0.7m to bring it to the surface. A cross section was surveyed, as shown in Figure 3.3, to assess the potential impact of a water table rise.

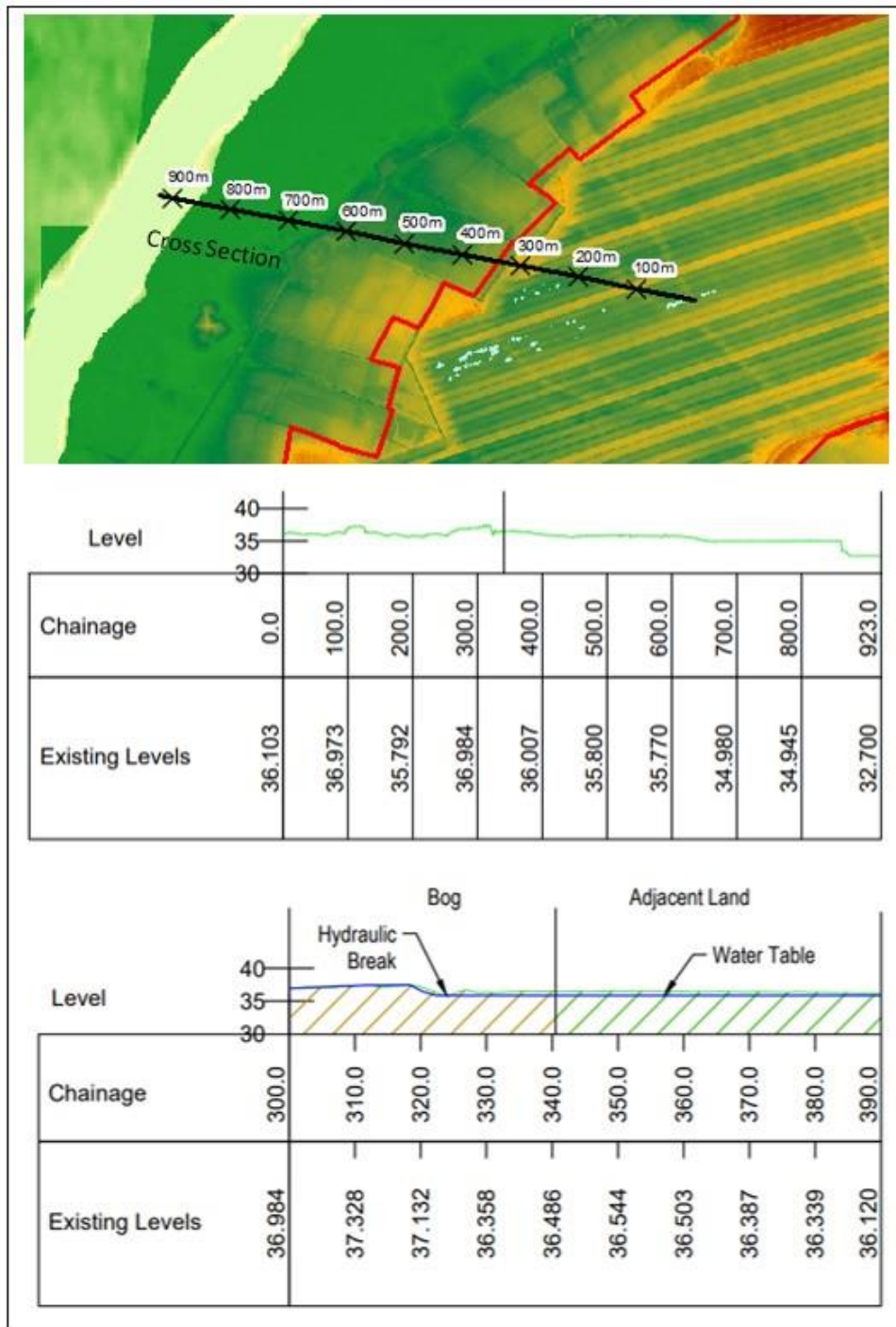


Figure 3-3 Conditions affecting water table

The cross section shows that a rising head in the bog would create a hydraulic gradient across into the adjacent land with the potential for a raised water table in the adjacent land also. This action determines the zone of influence and the areas of potentially wetter ground. The presence of boundary drains however will act as a hydraulic break controlling the hydraulic gradient and reducing the zone of influence. As these boundary drains lie lower than the adjacent land it is expected that they will function as a hydraulic break. This however is dependent on the drain's ability to adequately convey flow.

Drains that are inefficient with high water levels (independent from the bog rehabilitation measures) will also raise the water table in the bog and potentially in the adjacent lands to the bog would be wet. The avoidance of the drain full condition is dependent on the retention of a positive gravity drainage function of the boundary drains the adequate functioning of which is maintained.

A comprehensive survey of the majority of boundary drains which provide the water table cut-off function to agricultural lands is available for Bloomhill Bog. It is assumed that these drains would be able to convey Q_{med} (2 year return period) flows under non-backwater conditions which would be typical of natural watercourses in Ireland. Therefore under non-flood conditions it is expected that the external drains identified around Bloomhill Bog will act as a hydraulic break to any hydraulic gradient created by bog re-wetting. However there is a risk that should the flow regime in any external drain be changed post rehabilitation that the land adjacent to the drain would become wetter.

Caution should be exercised during any alterations of boundary drains around Bloomhill Bog. As described in section 2.3, the peat overlays permeable bedrock. It is important to avoid the creation of new flow paths into the bedrock which has the potential of increasing water table flood risk elsewhere or altering the hydrogeological conditions for peat formation. If deepening of drains is undertaken it should therefore be undertaken with care so as not to deepen the drain beyond the base of the peat.

There is also a risk that as the bog fills with water and wants to discharge, and that unintended discharge locations would occur. A review of the bog boundary was carried out. No low points were identified that may become an unintended discharge location. Bloomhill Bog discharges via adjacent land drains west to the River Shannon, to the north to the Boor River, to the Curraghboy River and its tributaries which flows north and then west through the site, these are tributaries of the River Shannon. There is little risk to adjacent lands from increased flows from the bog owing to elevated water table levels. As previously set out this is dependent on existing boundary drainage network isolating the bog from lower level adjacent lands and providing a positive gravity drainage function. In other words capacity to convey Q_{med} or 2 year return period flows and a free flow (constantly falling) away from the bog.

3.2.2 Increased Runoff

Evidence from bogs that have previously been the subject of restoration measures demonstrates that the measures proposed at Bloomhill, which are all aimed at reducing runoff and retaining water within the bog, have the effect of reducing the frequency and magnitude of flood events by restoring a more natural hydrological regime. Restoration / rehabilitation has been successfully applied to numerous Bord na Móna bog sites as well as SAC sites such as Clara Bog (East), Raheenmore Bog, Carrownagappul Bog and Lisnageeragh Bog. Elsewhere, the restoration of peatland catchments in numerous sites across the UK, such as Exmoor National Park in Snowdonia, has demonstrated positive flood alleviation as a result of following rehabilitation measures and monitoring has shown reduced runoff from the moorland as a result of increased storage in the peat.

The risk of increased runoff from Bloomhill Bog is low. All rehabilitation measures being proposed will reduce runoff. However, there is a potential that if bog re-profiling is carried out as part of the bog rehabilitation measures that the bog sub-catchments will be modified. Changes in sub-catchments could result in certain

discharge points draining larger areas. This would result in increased flows that could outweigh the effect of the reduced runoff arising from the rehabilitation. This is a moderately low risk at Bloomhill as the re-profiling of the bog, if carried out, will generally result in the same topographical flow paths, catchment watersheds and discharge locations as in the pre-rehabilitation state. Similarly, the effect of reducing or turning off the pumps at discharge points could result in raised water levels and a transfer of water across sub-catchments leading to increased runoff through other discharge points. This would be a low risk provided the alteration to the pumped discharge points allow for continued discharge and for ponding within the bog if necessary, to store the runoff. In the absence of a full pre and post rehabilitation runoff model and a precautionary approach has been adopted to ensure that all drainage infrastructure from the bog is retained and is fit for purpose.

3.2.3 Low Flow Assessment

A low flow risk assessment was completed to identify whether any discharge locations from the bog are at high risk of low flow during periods of low rainfall and high evapotranspiration. While it is anticipated that rehabilitation will generally lead to dampening of peak flows and support sustained flows during dry periods, there is a potential risk that during prolonged dry periods that the rehabilitation measures may lead to downstream watercourses drying out as a result of increased infiltration, increased rates of evapotranspiration along with the additional storage capacity created within the bog.

A high level risk assessment was carried out to identify the particular discharge locations where this may be a risk. The following are considered the key factors that are most likely to influence the risk of drains previously unaffected experiencing low flow:

1. The contributing catchment area to each discharge location (as this is one of the main factors that will influence the range of flow rates);
2. The intensity of the rehabilitation works within the catchment (both in terms of measures proposed and proportion of the catchment undergoing rehabilitation)

The larger the contributing catchment area it is considered less likely that a drain will be to dry out, while the more intensive the rehabilitation works the more likely a drain will be to low flow. In order to simplify the risk assessment process three risk categories (High, Moderate and Low) were identified for catchment area and restoration intensity based on experiences from other bogs where this issue has occurred. For rehabilitation intensity the proportion of the catchment area undergoing rehabilitation was used as an indicator of risk. The overall risk category assigned is determined based on Catchment area risk multiplied by Rehabilitation intensity risk as summarised below:

Table 3-2 Parameters of Catchment Low Flow Risk

Risk category	Catchment area (ha)	Rehabilitation intensity (% of catchment area)	Overall risk category
Low (1)	>20	<30%	Low (1-3)

REPORT

Moderate (2)	5-20	30-60%	Moderate (4-6)
High (3)	<5	>60%*	High (7-9)

*Note: Rehabilitation intensity (% of catchment area) capped at Moderate for where the rehabilitation measure only involves drain blocking on vegetated high bog (MLT2)

Where any discharge locations are identified as high risk, it is recommended that Bord na Móna undertake a review of the drainage channel downstream of the bog to identify the potential impact to the land owners.

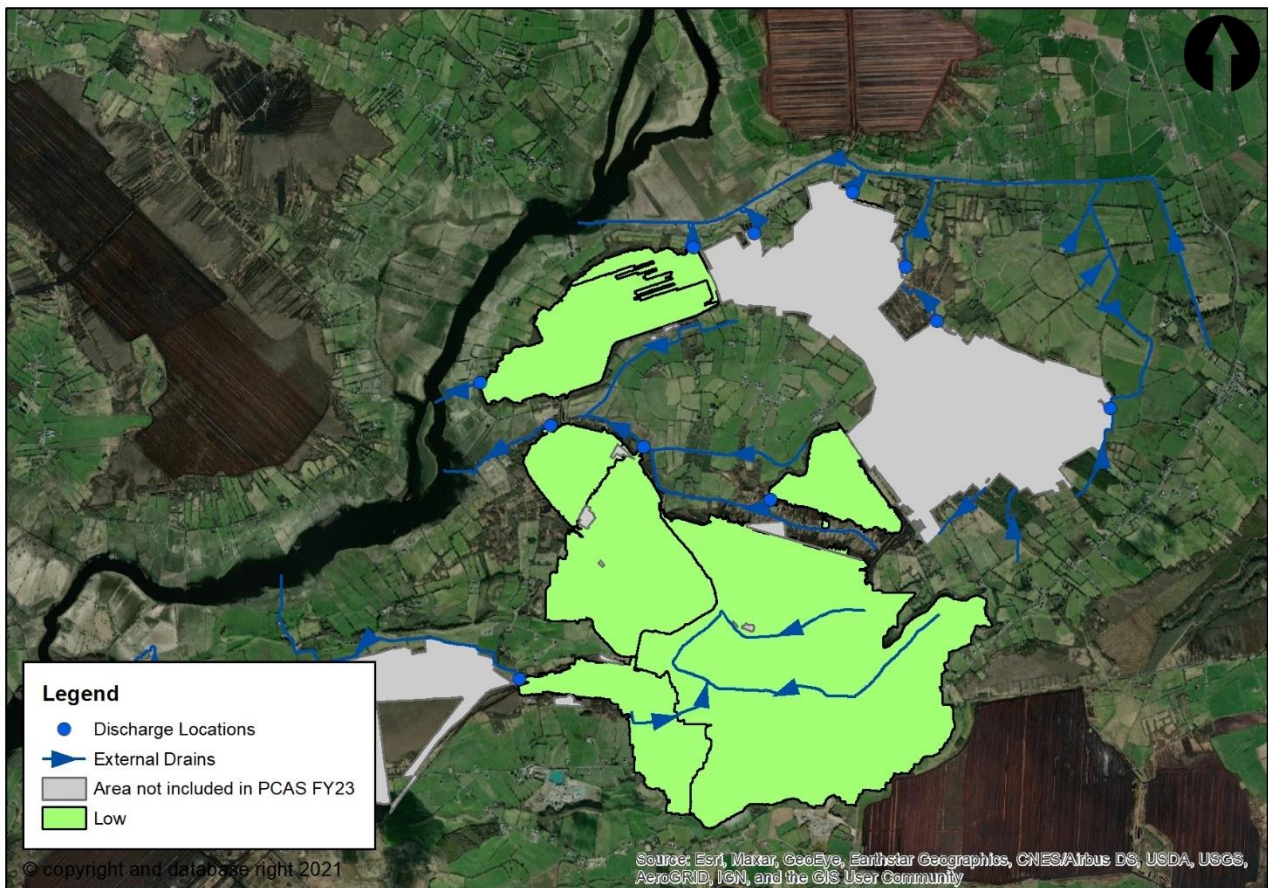


Figure 3-4 Overall Catchment Risk

Through assessing the catchment areas and rehabilitation intensity, all catchments were classified as low risk. No high risk catchments were identified that would require further survey and assessment.

3.3 Potential Risk Areas

The following assets have been identified as being at potential risk from flooding or wetter conditions as a result of measures described in Table 3.1 being implemented.

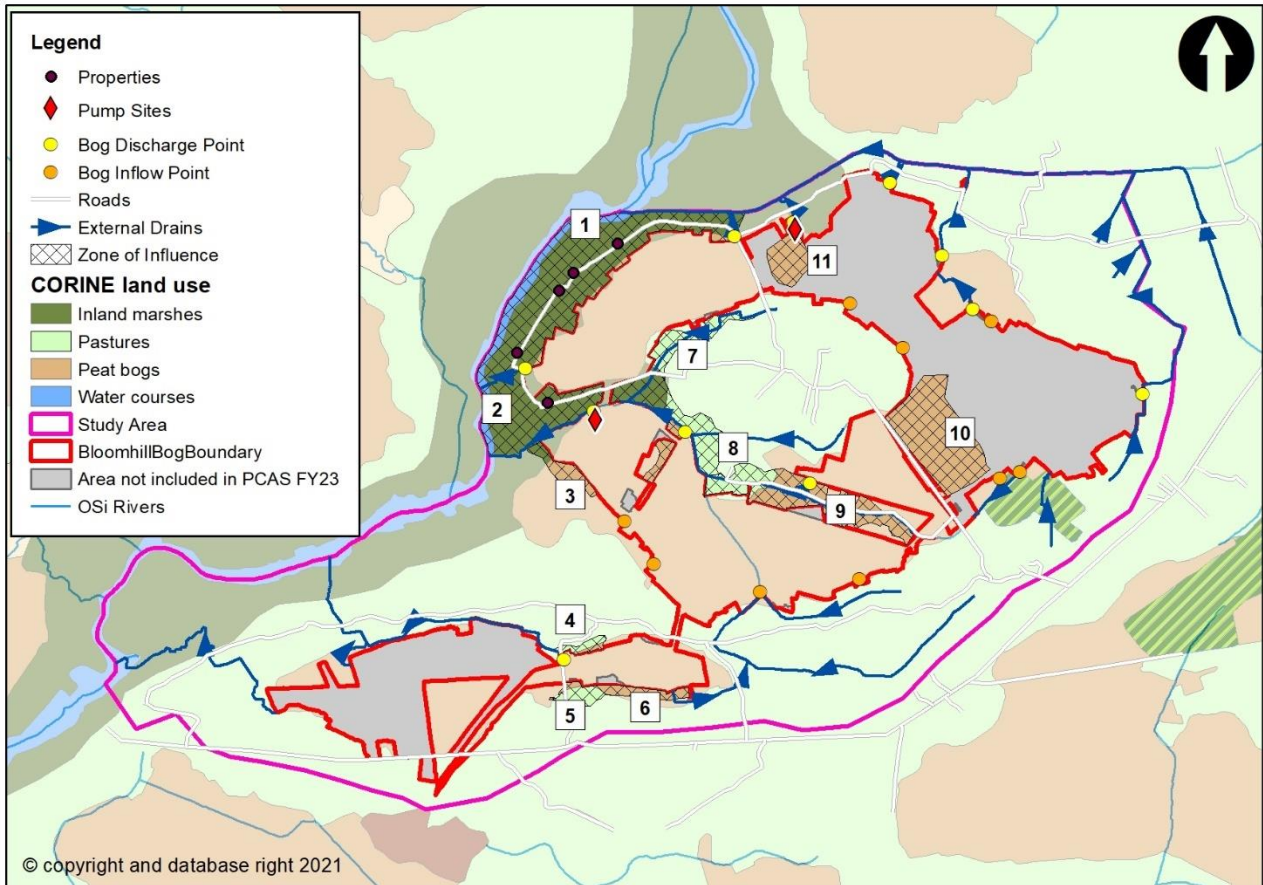


Figure 3-5 Bloomhill Bog Rehabilitation Plan- Assets at risk

The assets at risk are set out in Table 3.3 along with the vulnerability, based on the current landuse, of the asset. It should be noted that the appraisal of the assets at risk considers the consequences of flooding or wetter conditions, not the likelihood of flooding or wetter conditions occurring.

Table 3-3 Assets at Risk

Item	Asset	Vulnerability to flooding and/or wetter conditions
1	Inland Marshes	Low Vulnerability. Inland Marshes can tolerate wetter conditions.
2	Inland Marshes	Low Vulnerability. Inland Marshes can tolerate wetter conditions.
3	Peat	Low Vulnerability. Peat could tolerate wetter conditions.
4	Agricultural land	High Vulnerability. Agricultural land would become less productive should it be made wetter.

REPORT

5	Agricultural land	High Vulnerability. Agricultural land would become less productive should it be made wetter.
6	Peat	Low Vulnerability. Peat could tolerate wetter conditions.
7	Agricultural land	High Vulnerability. Agricultural land would become less productive should it be made wetter.
8	Agricultural land	High Vulnerability. Agricultural land would become less productive should it be made wetter.
9	Peat	Low Vulnerability. Peat could tolerate wetter conditions.
10	Peat	Low Vulnerability. Peat could tolerate wetter conditions.
11	Peat	Low Vulnerability. Peat could tolerate wetter conditions.
12	Roads	Low vulnerability. Road level slightly higher than surrounding land. Risk of flooding is low.
13	Properties	Moderate – High Vulnerability. Although the impact of wet ground conditions or flooding to properties would be considered high, the level of these properties is at a higher elevation than the surrounding land.

In addition to the above risks there is a general low risk that should degradation of the bog boundary occur surface water could be released into adjacent lands.

4 OBJECTIVES

The overarching objective of the Bloomhill Drainage Management Plan is to facilitate the rehabilitation of bog through management of potential adverse impacts to adjacent land and waterbodies. SMART² objectives were developed for the Drainage Management Plan that provides direction for the overarching objective. These objectives consider constraints, risks and opportunities that were identified in chapters 2 and 3 and are detailed as follows:

1. To manage potential water table impacts between adjacent land and Bloomhill bog during and after rehabilitation measures.
2. To retain the current drainage capacity of the adjacent land flowing into Bloomhill bog both during and after rehabilitation measures.
3. To maintain or reduce flows released from the bog at the discharge locations.
4. To manage sediment entering the River Shannon, the Boor River or the Curraghboy River during and after rehabilitation, these measures are to ensure compliance with current discharge limits in IPC Licence.

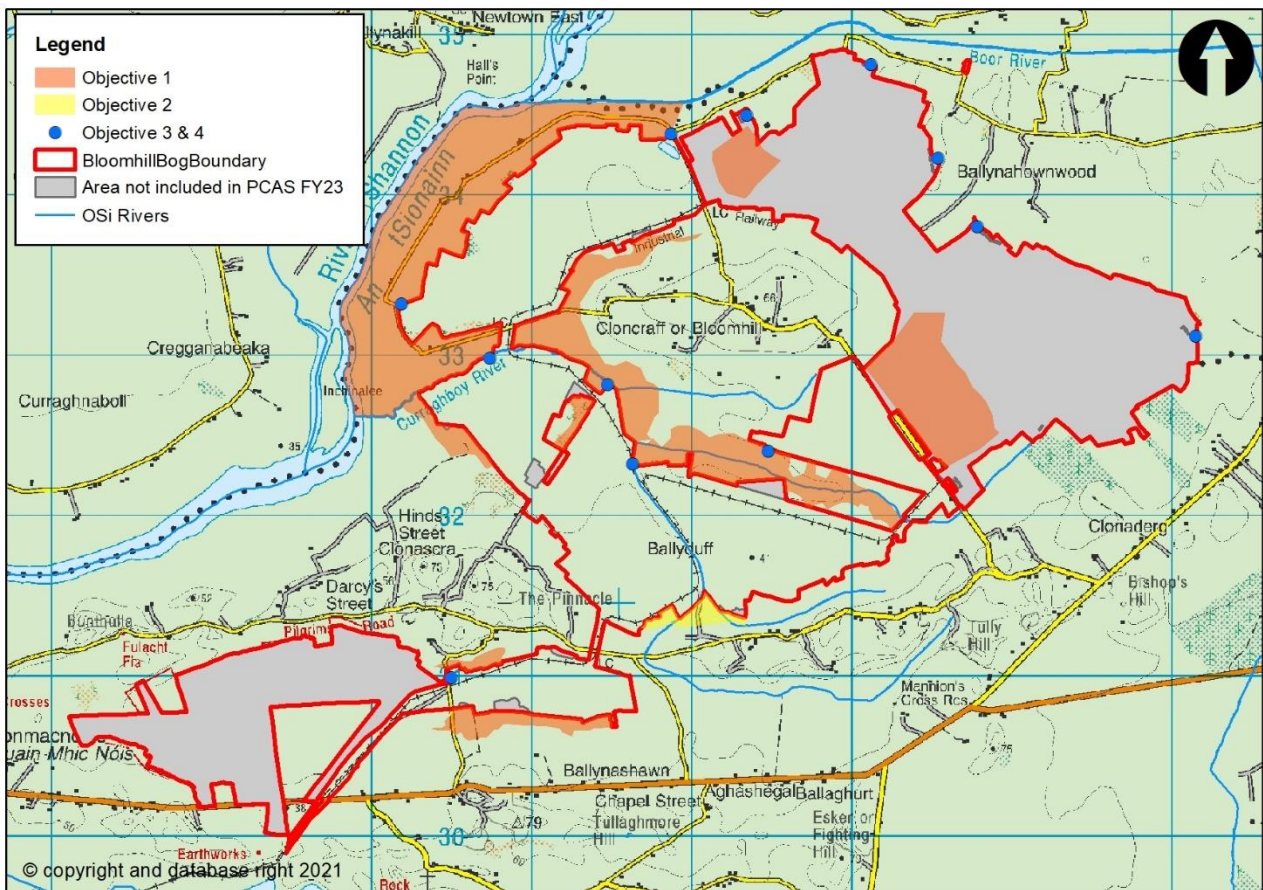


Figure 4-1 Bloomhill Bog DMP objectives

² SMART – Specific, Measureable, Achievable, Relevant, Time bound

5 DRAINAGE MANAGEMENT MEASURES

5.1 Key Drainage Features

Drainage management measures were identified in relation to the objectives set in chapter 4 and are described below. Objective 1 considers the potential impact to adjacent land from water table rise. Objectives 2 and 3 consider the control mechanisms to flow discharging from the bog.

An assessment was carried out to identify the existing key drainage features available to meet the objectives set. Figure 5.1 presents the key drainage features identified. It can be seen in the figure that for water table level rise to be managed between the bog and adjacent land that a hydraulic break will be required where available. To ensure that the flow and sediment discharging from the bog is managed the discharge control points will need to be maintained.

Outside the Bord na Móna bog boundary key external drains were identified. These drains are hydrologically connected to the bog drainage network. While no drainage issues were identified along these external drains, see section 2.4, a risk of sediment deposition was highlighted from sources outside the bog. The maintenance of the existing silt ponds will mitigate the risk of sediment deposition arising from rehabilitation. Post implementation of the measures there will be in general a reduction in risk of sediment/silt escape once the bog reaches environmental stabilisation. It is noted that sediment deposition in the external drains could impede the drainage of the bog and adversely impact adjacent lands.

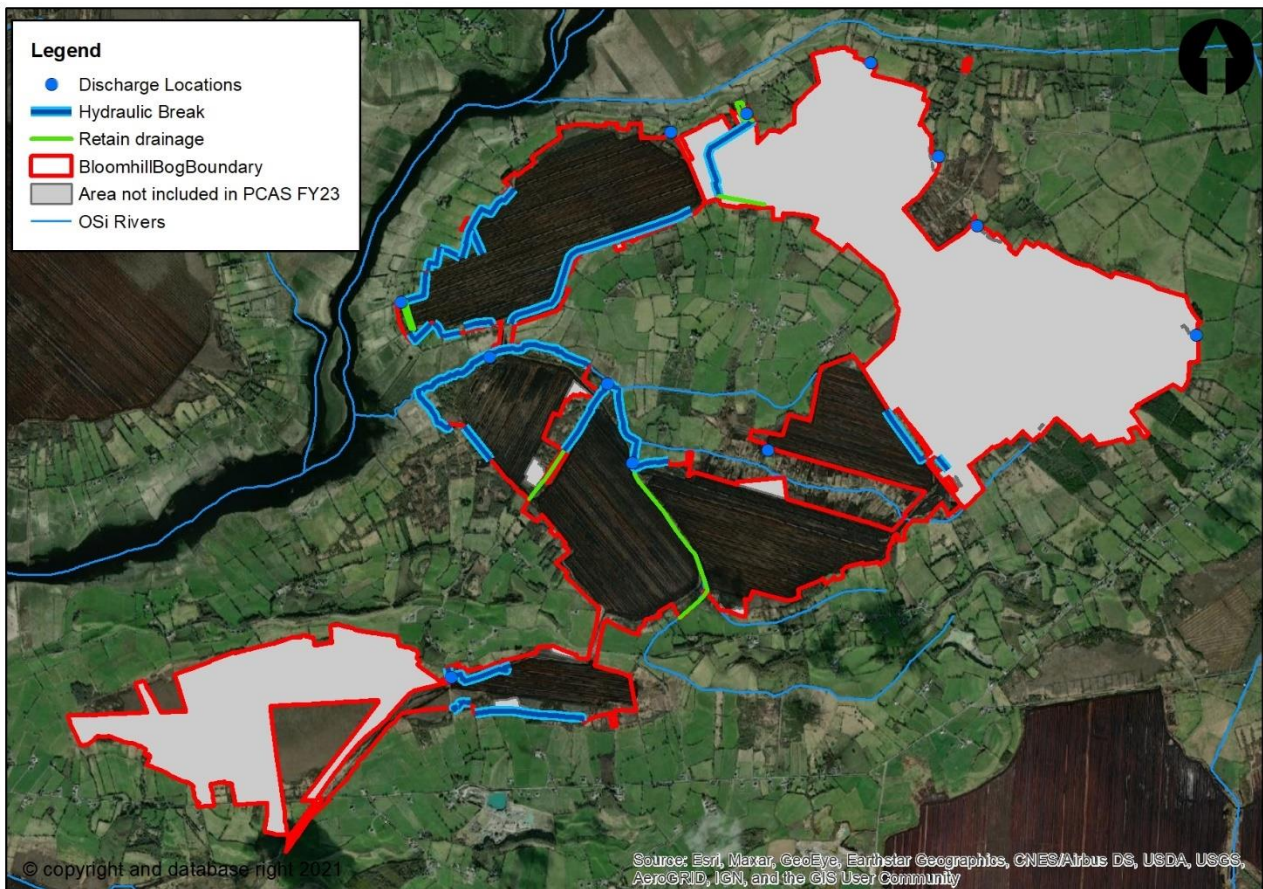


Figure 5-1 Key drainage features for Bloomhill Bog

When identifying measures to provide the key drainage features a review was carried out of the drains. LiDAR, topographical surveys and local knowledge from Bord na Móna operatives were used in this review. While the review gave a good indication of the key drainage features' performance it is acknowledged that gaps in information or changes to features post survey could change the expected performance. Bloomhill Drainage Management Plan therefore outlines a suite of responsive measures taking into account such factors as robustness and ongoing on-site observations. The Drainage Management Plan would therefore allow the bog to be managed and adapted as the rehabilitation plan progresses and is retained in the future. The following sections describe the suite of measures that can feasibly be implemented for the Bloomhill Bog Drainage Management Plan.

5.1.1 Boundary Drains

Boundary drains can provide hydraulic breaks between the bog and adjacent land, see Figure 5.1. In most areas of the Bloomhill Bog where hydraulic break would be required there are existing boundary drains. Available information indicate that these drains are suitable to provide hydraulic breaks and can be designated as such and retained in the future. Observing and recording the suitability of the boundary drains is recommended and where they are found to be not functioning as predicted upgrade works will be required. This would involve modification of the drain to make them larger/deeper/wider/steeper. This may be only in specific locations along the drain or an entire reach may require upgrading. Where there is no boundary drain present a new drain can be excavated in order to create the hydraulic break required. In these cases a channel of specified dimensions and slope will be required and where possible will not extend into the mineral soils (See section 3.2.1).

5.1.2 Bog Rehabilitation Modification

Where a boundary drain is not suitable to act as a hydraulic break or where none exists it may be possible to review the bog rehabilitation plan to provide the required mitigation measure. This can take the form of sacrificing rehabilitation of the last peat field, or equivalent rehabilitation area, closest to the adjacent land where an existing field drain could provide the hydraulic break function. The field's drainage network would be retained keeping the water table to current conditions and providing a water table cut-off in relation to the adjacent land.

In areas zoned as wetland within the rehabilitation plan control of the water levels may be required. Where there is a potential backwater into adjacent lands or where raised water levels could potentially raise water levels on adjacent lands setting a maximum control water level may be required. This control level will allow water to drain freely from the wetland area although water levels may rise higher than the control level during flood conditions.

5.1.3 Maintenance of Discharge Points

Existing silt ponds are located upstream of the bog discharge points. They help regulate the flow and ensure that's suspended solids are settled in the pond, maintaining compliance with the emission limit values regulated

by the EPA. Bord na Móna have legal responsibility to maintain these silt ponds and ensure their proper functioning capacity under the existing IPC Licence (Ref. P0500-01).

5.1.4 Monitoring

As mentioned above DMP measures were selected based on level of certainty and on-site observations. The most appropriate measure was selected from a suite of measures representing varying levels of intervention. Monitoring of the measure and adjacent land will be required prior, during and after the rehabilitation measures. A monitoring programme can be implemented to observe the impact from the bog rehabilitation to the adjacent land. Monitoring would be observational where the condition of the asset in question is assessed in relation to present day conditions accounting for seasonal variability. Where negative impacts are observed other measures can be implemented that will establish a hydraulic break or other features with the same functional requirement. Otherwise monitoring should continue until environmental stabilisation.

5.2 Identification of Measures

The following section along with Figure 5.2 and Table 5.1 lists and describes the DMP measures for Bloomhill Bog.

- DMP 1. The boundary drains identified in Section 5.1 as key drains are proposed to act as hydraulic breaks. The boundary drains' ability to carry out this function is dependant on their condition and being free draining. Section 5.1 indicates how all boundary drains appear to be functioning sufficiently with no known drainage issues identified along the drains or in adjacent lands.
- Topographical surveys, LiDAR and anecdotal evidence suggests that the boundary drains identified for retention are functional and can be used as drainage management measures. They would therefore be suitable to act as hydraulic breaks provided they are retained with their current estimated carrying capacity. If issues are identified during walkover surveys, a higher level of intervention, drain upgrade, can be applied in these locations.
- DMP 2. Existing silt ponds would be required to be maintained.
- DMP 3. Drains to be retained to ensure flow from adjacent lands through the bog.
- DMP 4. DMP 4 refers to an existing drain which should be upgraded in order for it to function as a hydraulic break.
- DMP 5. At DMP 5 the bog boundary has no suitable boundary drain. The last production field drain of the bog has therefore been identified for exclusion from the bog rehabilitation plan.
- DMP 6. Creating a new drain to ensure there is flow out of the bog from the excluded production field drain.
- DMP 7. DMP 7 refers to reducing the rehabilitation in this area of the bog where no boundary drain exists to act as a hydraulic break. Minimal intervention in this area should have a limited impact on raising the water table therefore reducing the risk to the adjacent land.
- DMP 8. At DMP 8 existing drains are recommended for retention in order to provide a hydraulic break. It is noted that parts of these drains are outside the Bord na Móna boundary. They do however provide

the break between the bog and adjoining land. The land between Bloomhill Bog and the drain is a known water sensitive environment. There would be no added value to any stakeholder therefore in creating a new drain along the Bloomhill boundary. While Bord na Móna cannot ensure the retention of the existing drain, monitoring will take place and other measures if required.

The remaining measures are of low intervention consisting of maintaining the existing features or monitoring lands and features.

Table 5.1 list the DMP measures identified for Bloomhill Bog and where they sit within the suite of possible measures that could be taken.

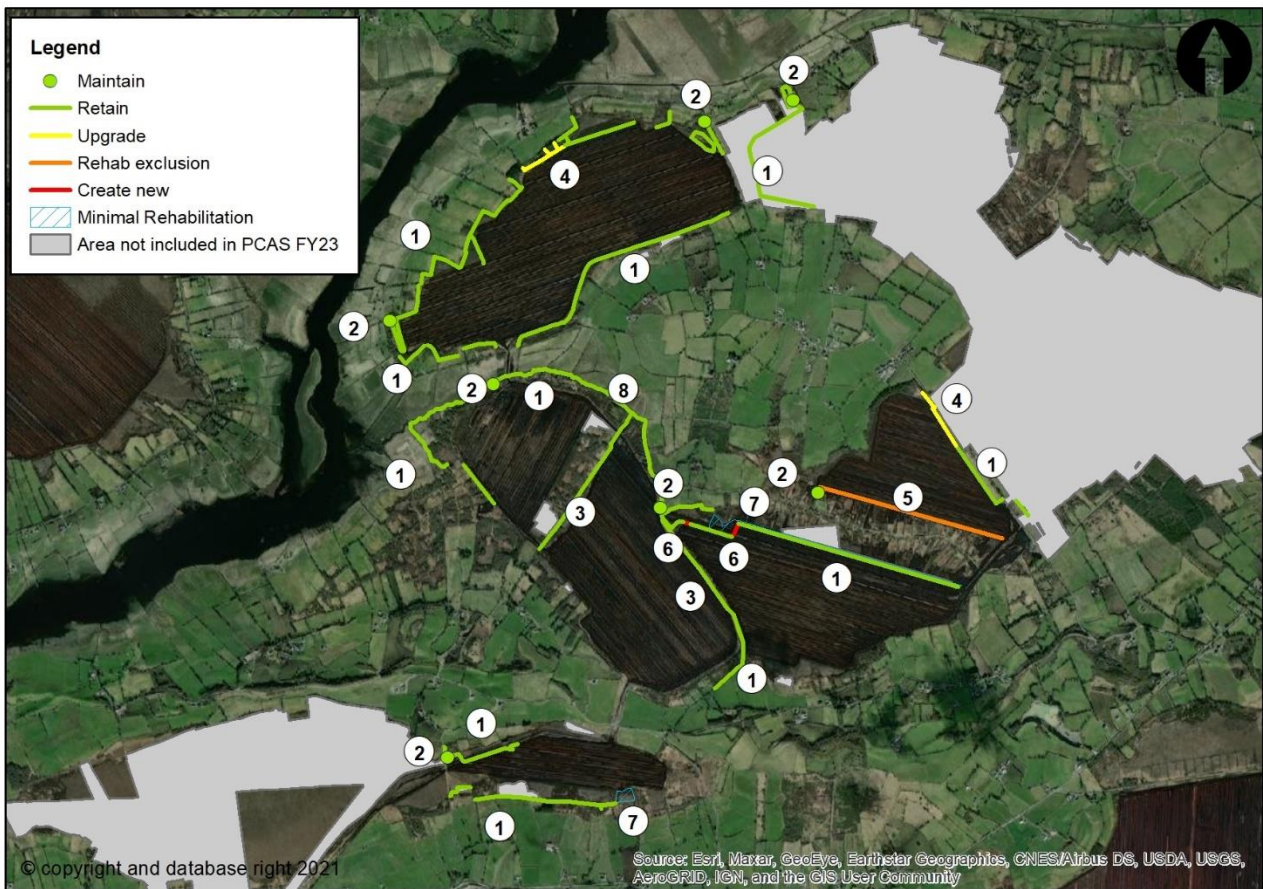


Figure 5-2 DMP measures for Bloomhill Bog

Table 5-1 Selection of DMP Measures

Measures Item	Feature	Function required	Suite of measures Level of intervention			
			Low			High
1	Boundary drain	Hydraulic break	Retain drain	Upgrade drain	Maintain outside bog field	Create new drain
2	Silt ponds	Silt and flow control	Maintain pond	Upgrade pond	-	-
3	Internal Drain	Flow through bog	-	-	Retain drains in area of bog	-
4	Boundary drain	Hydraulic break	Retain drain	Upgrade drain	Maintain outside bog field	Create new drain
5	Production field drain	Hydraulic break	Retain drain	Upgrade drain	Maintain inside bog field	Create new drain
6	Boundary drain	Hydraulic break	Retain drain	Upgrade drain	Maintain outside bog field	Create new drain
7	Marginal Land	Hydraulic Break	-	-	Reduce rehabilitation Intensity	-
8	Boundary drain	Hydraulic break	Retain drain	Upgrade drain	Maintain outside bog field	Create new drain

5.3 Interaction with Monitoring Plan

As part of the bog rehabilitation plan groundwater level monitors have been installed at Bloomhill Bog. These monitors will record water table and groundwater levels over the coming months. It will therefore be possible to ascertain if the water table is rising within the bog following the implementation of the rehabilitation plan.

This data should be considered during the monitoring measures of adjacent land. When water table levels are known to be rising within the bog, monitoring of the adjacent land (as described in Section 5.1.4) should take place on a more regular basis to ascertain if impacts to lands outside the bog are observed.

5.4 Residual Risk & Limitations

The level of flood risk to the bog and the surrounding lands has been shown to be low (Section 2.6) generally but with small areas of the bog susceptible to poor drainage and flooding. The impact of the proposed rehabilitation measures will generally be to reduce runoff from the bog but this will lead to increased water table levels and surface water flooding in the bog itself. During flood events no increase in flood risk is envisaged as a result of the rehabilitation measures. During normal low flow regime the Drainage Management Plan seeks to identify the measures that should provide a hydrological cut off between the bog and the surrounding lands.

As indicated in previous sections there are limitations to the assessments associated with the drainage network both within the bog and outside. Factors such as flow estimations of small catchments, lack of survey data limiting drain capacity estimations and high level definition of soil porosity all contribute to these limitations. Nevertheless the measures recommended represent a pre-cautionary approach based on conservative assumptions.

The DMP measures proposed set a baseline approach and a suite of measures in any given location has been provided. This will facilitate a reactive approach to be taken if required. In the event that a measure not be operating efficiently a higher intervention measure can and will be implemented. This will allow Bord na Móna to identify the most appropriate measure while proceeding with drainage function uncertainties.

5.5 Climate Change Adaptability

There is high uncertainty in relation to the effects of climate change, particularly in how it may manifest in terms of small catchment runoff. Ireland is predicted to have drier summers and wetter winters. The most appropriate guidance in an Irish context can be found in the OPW's Flood Risk Management Climate Change Sectoral Adaptation Plan³. For the Mid-Range Future Scenario, representing a central emissions estimate on a 100 year time horizon, it is recommended that allowances for peak flow and rainfall are increased by 20%. If such increases in runoff are realised over the timeframe of establishment of rehabilitation measures this could lead to a perception that bog rehabilitation measures at Bloomhill are the cause of increased flood risk.

³ Accessed on 10/12/2020 at

<https://www.gov.ie/pdf/?file=https://assets.gov.ie/46534/3575554721374f7ab6840ee11b8b066a.pdf#page=1>

REPORT

It is anticipated however that the rehabilitation measures will lead to reduced peak runoff as the water storage function of the bog is increased. This will serve to regulate peak runoff in winter and potentially smooth out the flows in drier periods, essentially acting against the anticipated effects of climate change.

It is therefore anticipated that the bog rehabilitation measures themselves will provide the mitigation of the effects of climate change on runoff and no additional measures will be needed. There are unknowns however in the effectiveness of the rehabilitation measures in this regard and also the severity of climate change impacts. Continued monitoring of the adjacent lands is therefore also crucial to gauge the effectiveness of the bog rehabilitation measures in mitigating these climate change impacts.

6 SUMMARY OF DRAINAGE MANAGEMENT PLAN

The Drainage Management Plan for Bloomhill consists of a series of measures to be implemented at different stages of the rehabilitation process. Drains along the boundary were identified as hydraulic breaks in order to mitigate against any potential impacts from the bog rehabilitation measures. The effectiveness of all drains acting as hydraulic breaks is dependent on their ability to convey flow which have been outlined in Section 5.1 and deemed suitable subject to the measures recommended. Factors such as channel size and slope will determine this along with any downstream feature which may control water levels. The external drains which these boundary drains discharge into are also key drainage features that will affect the operation of the drainage network.

Measures will range from low intervention to high and consist of monitoring, retention of existing features, upgrading features. Maintenance of measures are proposed to the silt ponds within the bog to ensure that discharge from the bog and sediment is controlled. This is a legal obligation for Bord na Mona and will continue at all existing silt ponds.

Monitoring of adjacent land is included in the plan. The monitoring will observe agricultural land, adjacent bog, and woodland for adverse impacts from the bog rehabilitation. In the event that adverse impacts are confirmed, higher intervention measures can and will be implemented to mitigate the impacts.

Monitoring measures will therefore be ongoing during and after the bog rehabilitation measures. Continued retention and maintenance of the key drains and silt ponds will also be required after the bog rehabilitation measures. Throughout the process landowner engagement is recommended to ensure both the rehabilitation plan and Drainage Management Plan are understood and to promote collaborative working to manage impacts as they arise.

Table 6-1 Drainage Management Plan

Measures required PRE bog rehabilitation measures	Measures required DURING bog rehabilitation measures	Measures required POST bog rehabilitation measures
Landowner engagement if required via community liaison	Landowner engagement if required via community liaison	Landowner engagement if required via community liaison
Retention of boundary drains (see section 5.1.1)	-	-
-	Wetland water level control (see section 5.1.2)	Wetland water level control (see section 5.1.2)
Monitoring boundary drains (section 5.1.4)	IF REQUIRED – Consideration of need for higher intervention measures	-
-	Upgrade discharge point (see section 5.1.3)	-
Maintenance of discharge points (see section 5.1.3)	Maintenance of silt ponds (see section 5.1.3)	Maintenance of silt ponds (see section 5.1.3)
Monitoring of adjacent land (see section 5.1.4)	Monitoring of adjacent land (see section 5.1.4)	Monitoring of adjacent land (see section 5.1.4)

REPORT

-

-

IF REQUIRED – boundary drain
upgrades (see section 5.1.1)

-

-

Retention of key drains and pipes
