



An Roinn Comhshaoil,
Aeráide agus Cumarsáide
Department of the Environment,
Climate and Communications



Land Use
Review

Land Use Review

Marc Kierans

Land Use Review – National Hydromorphology Expert Group

10 July 2024

Contents



- Land Use Review Background
- LUR Phase 1 Policy Catalogue Survey
- LUR Phase 2 Policy Survey
- Policy examples with Land use asks/targets
- Ongoing work

Programme for Government

Our Shared Future

Land Use Review

The Government will undertake a national land use review, including farmland, forests, and peatlands, so that optimal land use options inform all relevant government decisions. The review will balance environmental, social, and economic considerations and involve a process of evaluation of the ecological characteristics of the land. It will include consideration of emissions to air and water, carbon sequestration, and climate adaptation challenges. Policy co-benefits, such as rewetting or forest regrowth to mitigate flooding risks in river catchments, will be considered. All stakeholders will be consulted. Such a review would allow knowledge transfer to policymakers, advisory services, and landowners, to assist farmers in making an informed choice as to how best to use their land, while also benefiting from available supports and incentives.



<https://www.gov.ie/pdf/?file=https://assets.gov.ie/130911/fe93e24e-dfe0-40ff-9934-def2b44b7b52.pdf#page=null>



Other reports in the series:

Phase 1 Document 01: Land Use Evidence Review Synthesis Report

Phase 1 Document 02: Stakeholder Categorisation

Phase 1 Document 03: Land Ownership Analysis

Phase 1 Document 04: Land Use Policy Catalogue

Phase 1 Document 04: Land Use Policy Catalogue (Appendix)

Phase 1 Document 05: Land Use Indicators

Phase 1 Document 06: National Land Use Policy - Review of International Best Practice 1

Phase 1 Document 07: Review of National Land Use Plans 2

Phase 1 Document 08: Socio-Economic Dimensions of Land Use

Phase 1 Document 09: Socio-Economic Dimensions of Land Use, Synthesis Report

Phase 1 Document 10: Financial Instruments and Land Use

Land Use Review Phase 1

19 No. Recommendations



Monitoring: recommendations to develop monitoring networks to collect or expand the data available.

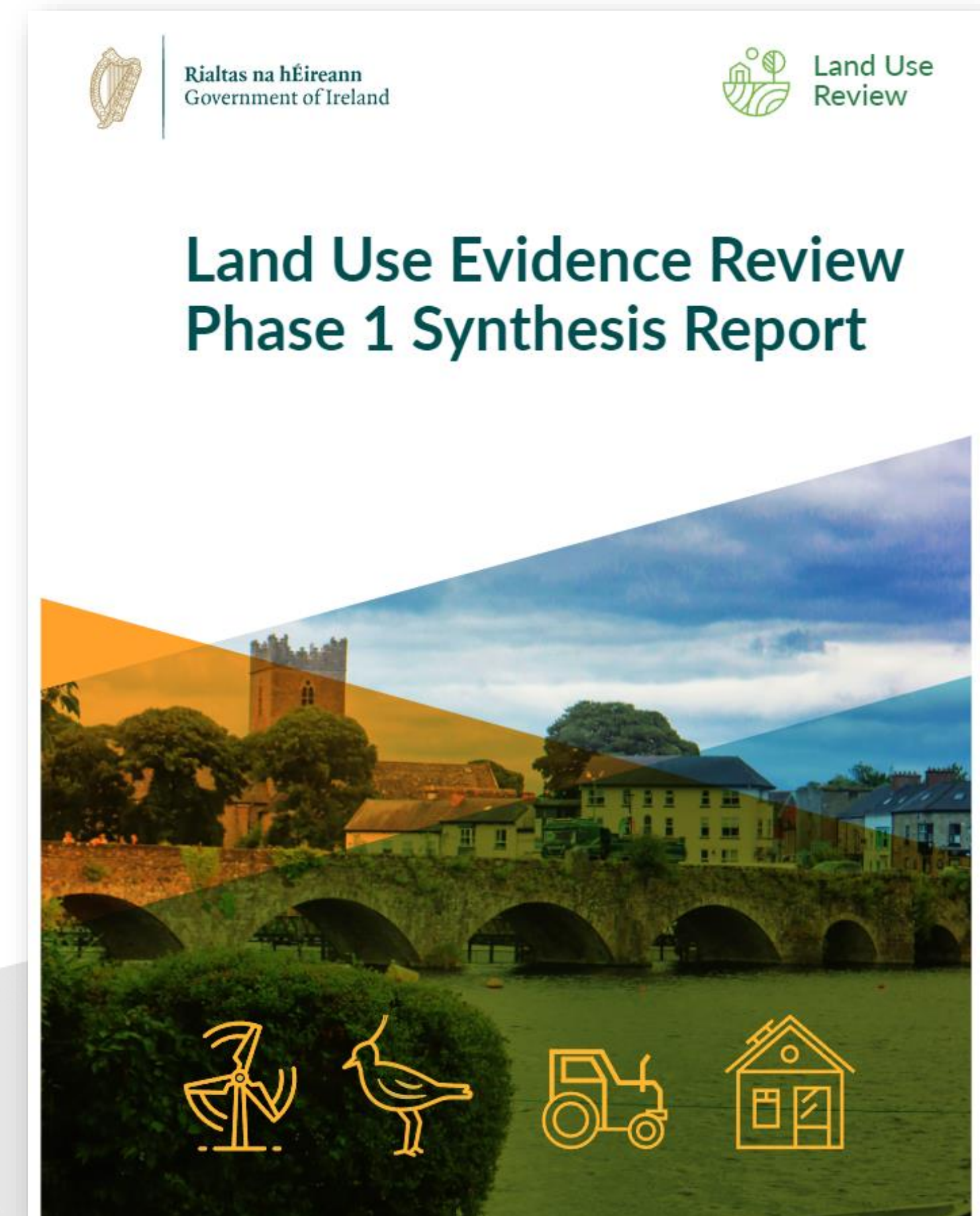


Mapping capability: recommendations to maintain and develop the suite of spatial data to support decisions, and to invest in Ireland's ability to generate this data.



Design and application of evidence: recommendations that require a new approach to how we use or structure our evidence. This could include a new set of indicators or combining our data in new ways such as models or strategic maps.

<https://www.gov.ie/en/publication/f272c-land-use-review-phase-1/>





Land Use Review

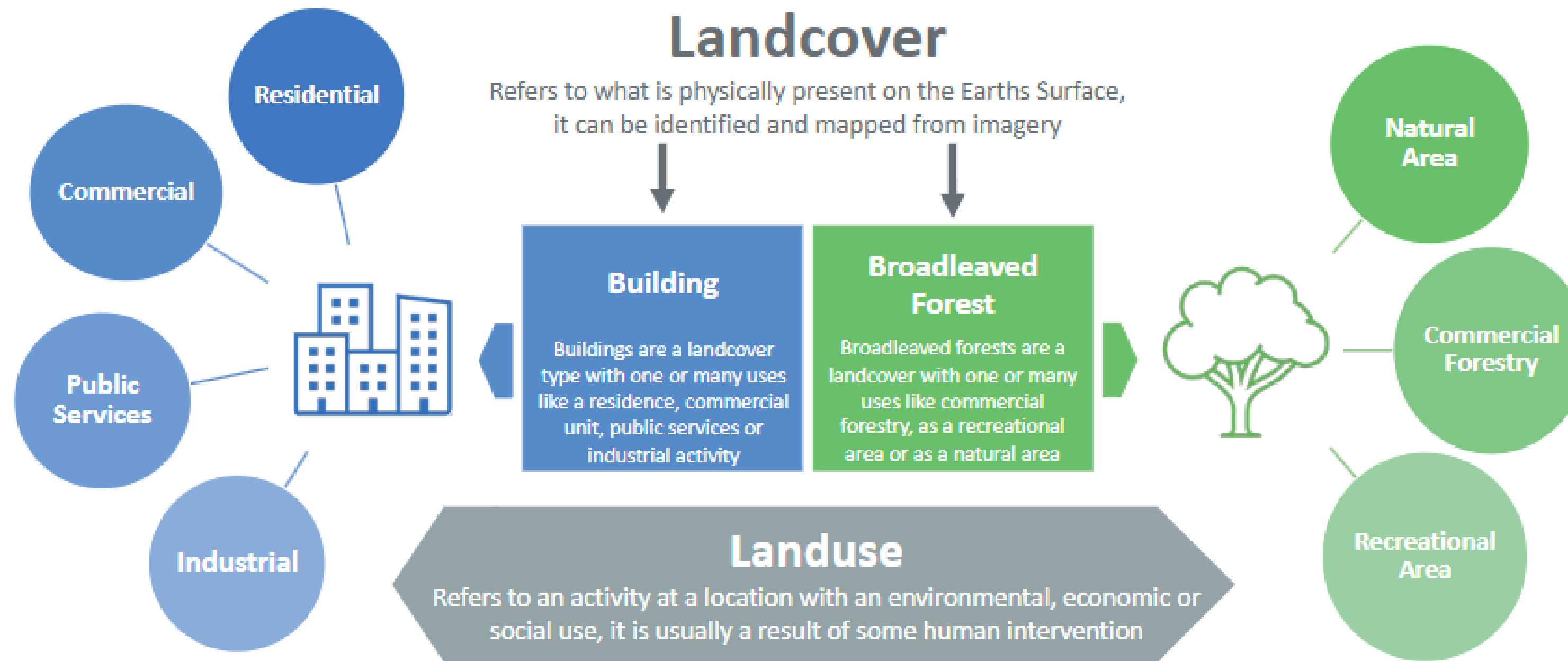


Figure 4.1: Understanding the difference between land cover and land use

<https://www.gov.ie/en/publication/f272c-land-use-review-phase-1/>

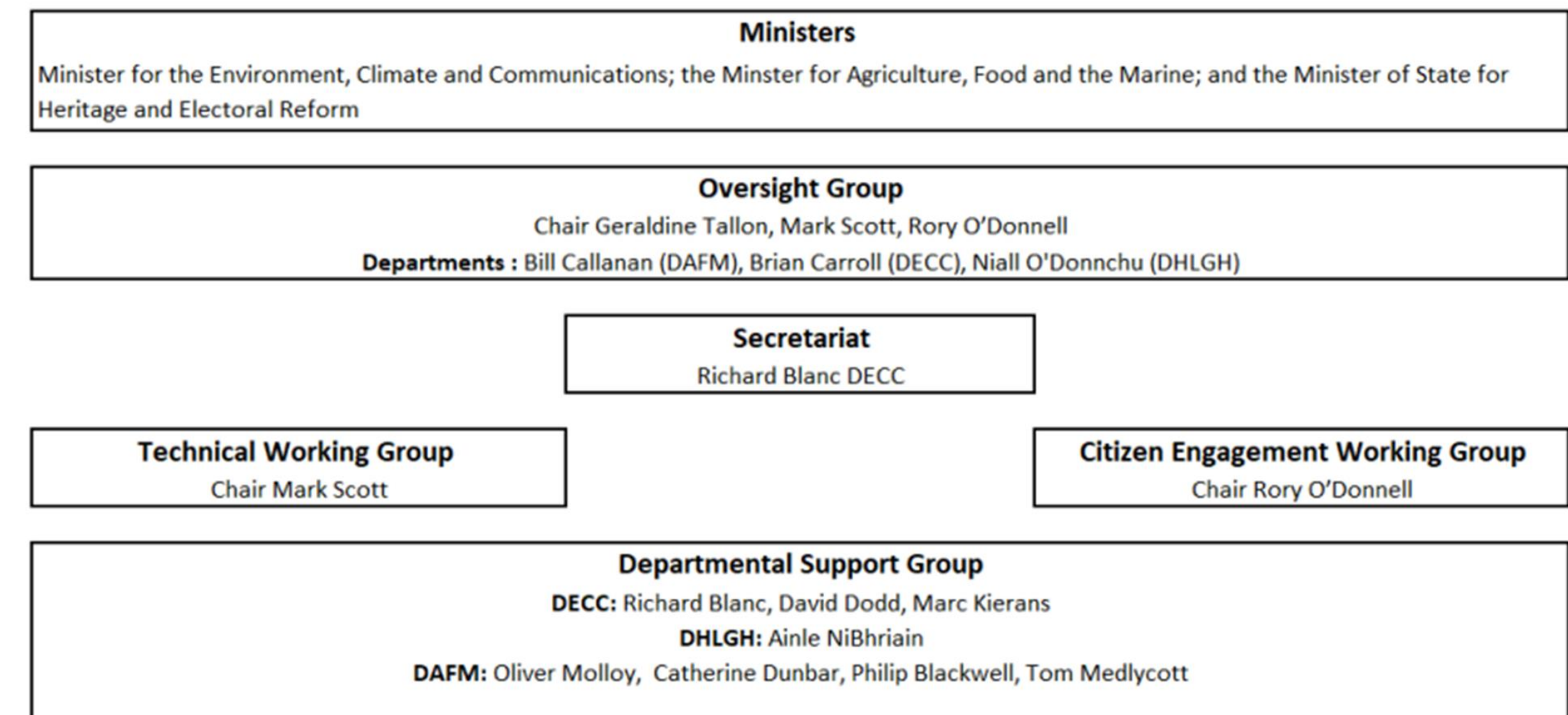
Land Use Review - Phase 2



- Phase 2 commenced in October 2023
- Established governance framework:
 - Oversight Group
 - Technical Working Group
(Chair: Prof Mark Scott)
 - Citizen Engagement Working Group
(Chair: Dr. Rory O' Donnell)

Governance and Delivery

Figure 1 Governance and delivery structure for the Land-use Review



Contents



- LUR Phase 1 Policy Catalogue Survey
- **LUR Phase 2 Policy Survey**
- Policy examples with Land use asks/targets
- Ongoing work

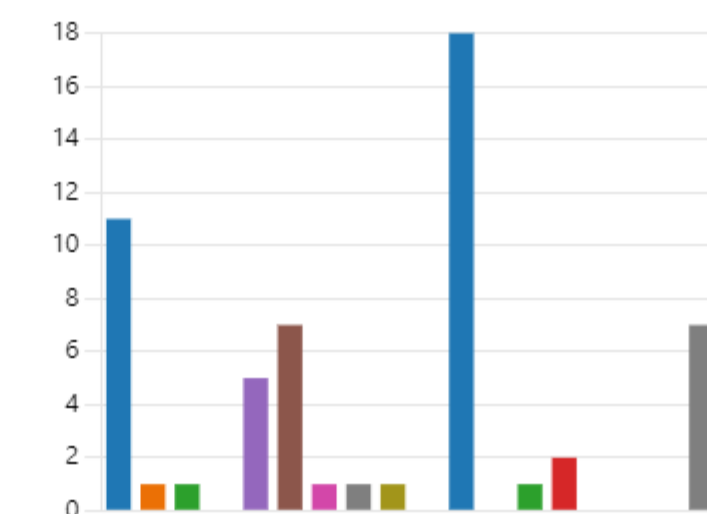
LUR Phase 2 – Land Use Policy Survey

- MS Teams Survey issued to all government departments – **October to November 2023**
- Purpose of survey to gather further information and contacts on plans/policies/strategies with a Land use ask to feed into LUR Phase 2
- **48 Questions**
- **68 responses across Gov Depts/agencies**

1. Your Department

[More Details](#)

Department of Agriculture, Foo...	11
Department of Children, Equalit...	1
Department of Defence	1
Department of Education	0
Department of Enterprise, Trade...	5
Department of Environment, Cli...	7
Department of Finance	1
Department of Foreign Affairs	1
Department of Further and High...	1
Department of Health	0
Department of Housing, Local G...	18
Department of Justice	0
Department of Public Expenditu...	1
Department of Rural and Comm...	2
Department of Social Protection	0
Department of the Taoiseach	0
Department of Tourism, Culture...	0
Department of Transport	7
Other	10



Land-use Review policies and measures, survey 2023

Please use this form to tell us about your initiatives - polices, strategies, and measures - that have a land use ask, for example land take for schools, transport links and heritage. These returns will be used to inform the delivery of the second phase of the Land-use Review as committed to by the Program for Government.

Replies go to the Department of the Environment, Climate and Communications.

Helpdesk available at lur@decc.gov.ie

Please complete one form per initiative

There is a **4,000 character limit** on text responses

Contents



- LUR Phase 1 Policy Catalogue Survey
- LUR Phase 2 Policy Survey
- **Policy examples with Land use asks/targets**
- Ongoing work

Forestry

Department of Agriculture, Food & the Marine



AMBITION FOR FOREST CREATION

18% forest cover

In 2022 ninety-nine citizens took part in a Deliberative Dialogue on Forestry. This was part of a series of consultations conducted by the Department of Agriculture, Food and the Marine to gather the views of people living in Ireland on the reasons why we create forests, the places they are established, the types of trees we plant, and how forests are managed. The event culminated with participants being asked to vote on the level of ambition that the Government should consider for forest creation as it develops its new strategy for forests.

36% of participants agreed that the aim should be to achieve 18% forest cover by 2050 or sooner, while a further 52% agreed that the aim should be to achieve an even greater expansion of forest cover to help combat climate change. Taken together, 88% of participants endorsed a forest cover target of 18% or more by 2050.

This Strategy aims to create the conditions that will lead to a substantial increase in forest cover. The pace at which 18% forest cover will be achieved will depend on how actively landowners and stakeholders will engage in demand led afforestation schemes.

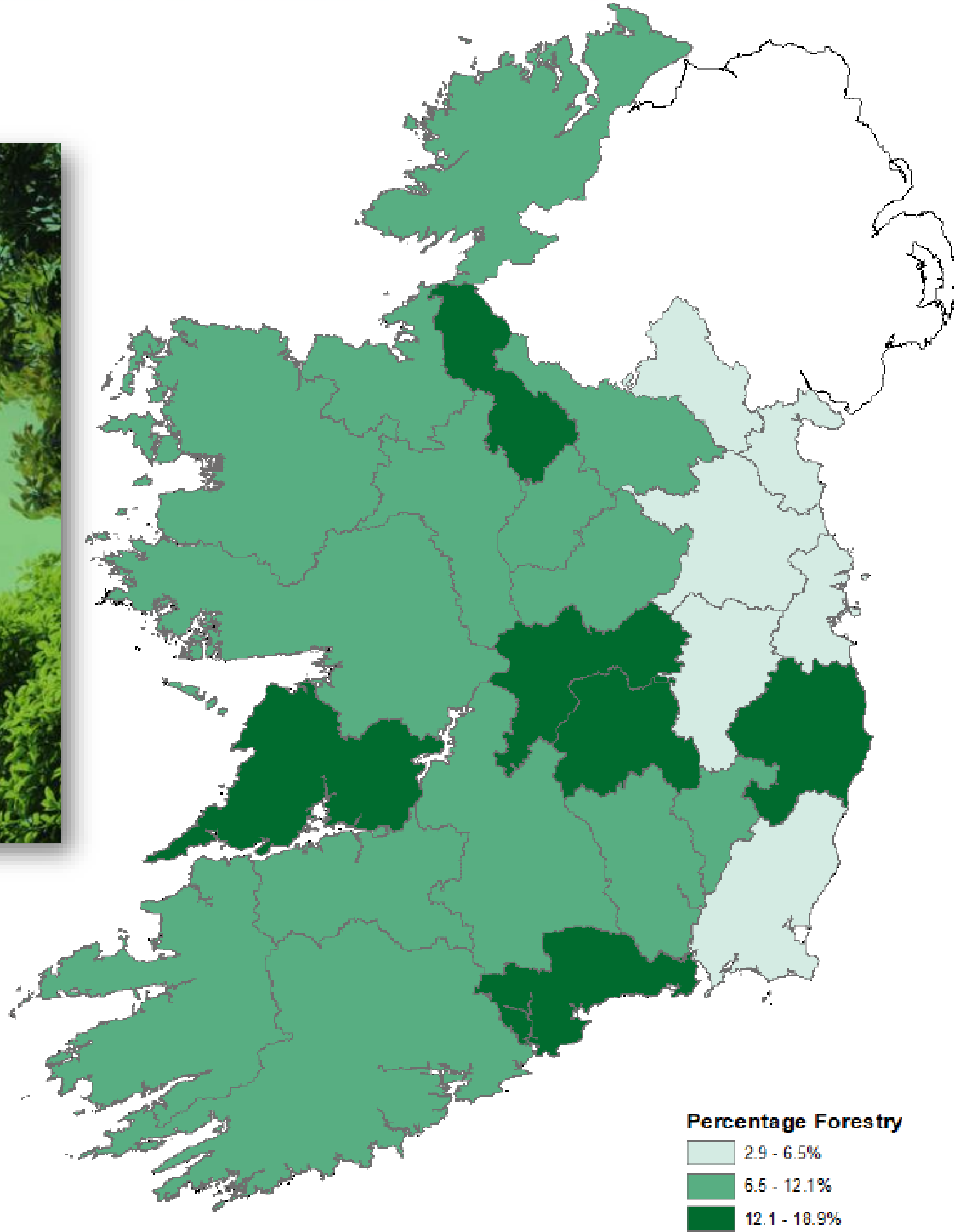


Figure 2.20: Percentage forestry land use in each county, 2017

Figure 3: Forest cover in Ireland

Forestry levels in 1000BC -

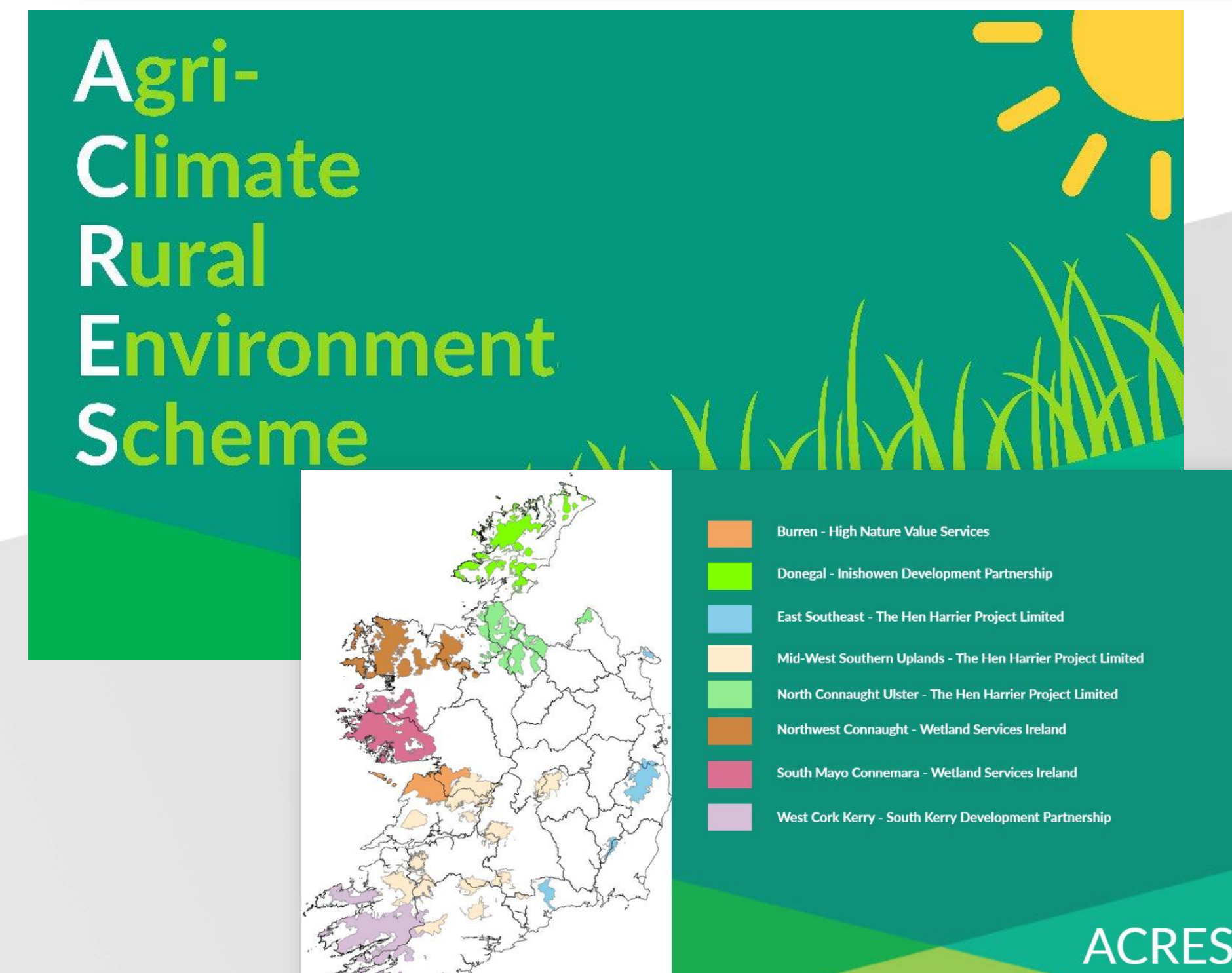
Agriculture

Food Vision 2030 . Target examples;

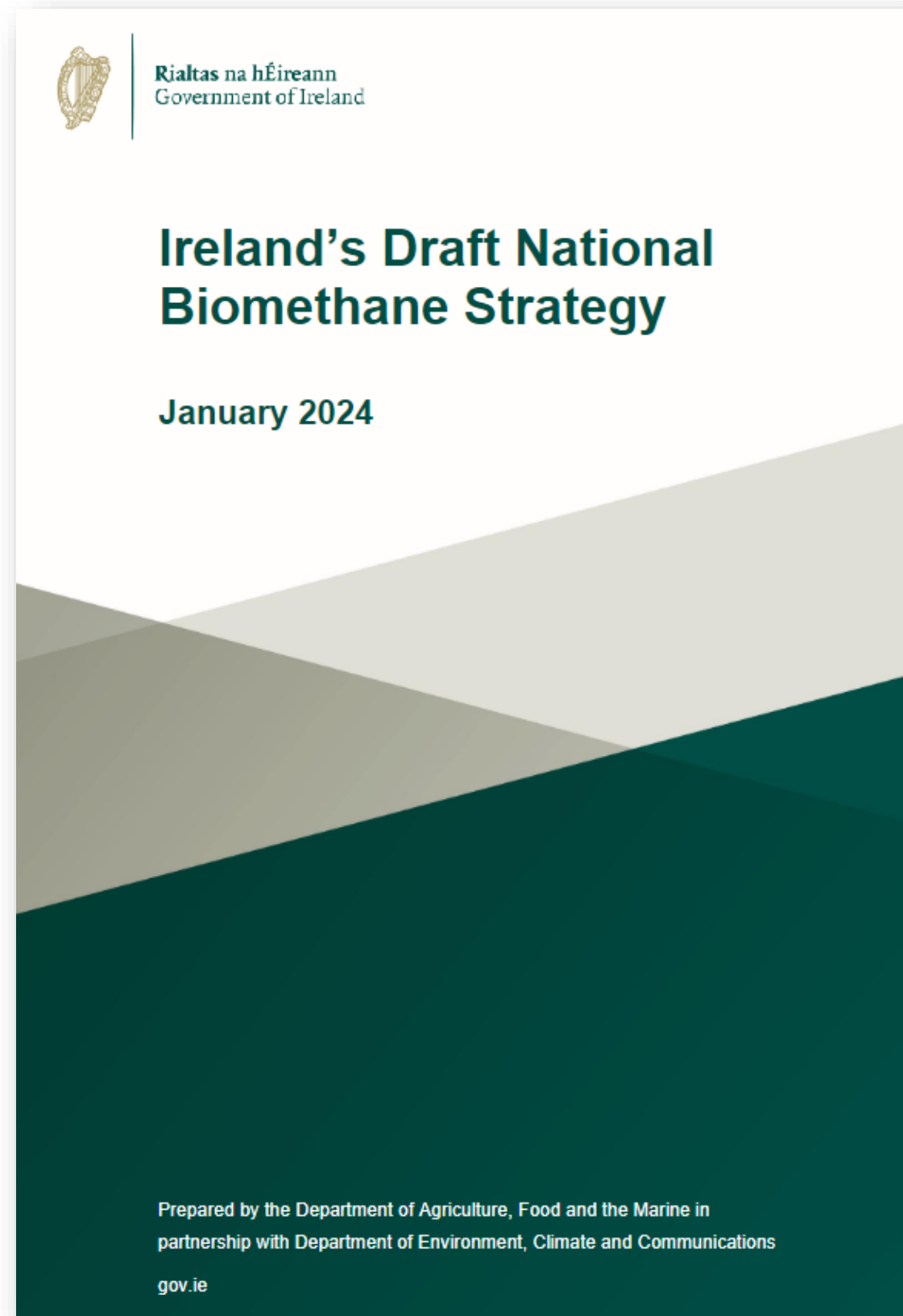
- Supporting an increase in area of tillage to **400,000** ha
- Incentivising an increase in the level of organic farming to **450,000** ha (10%) by 2030
- Viable and resilient primary producers with enhanced wellbeing.
- Contribute to the delivery of the land use, land-use change and forestry (LULUCF) targets for afforestation and reduced management intensity of organic soils

ACRES (replaces GLAS under new CAP)

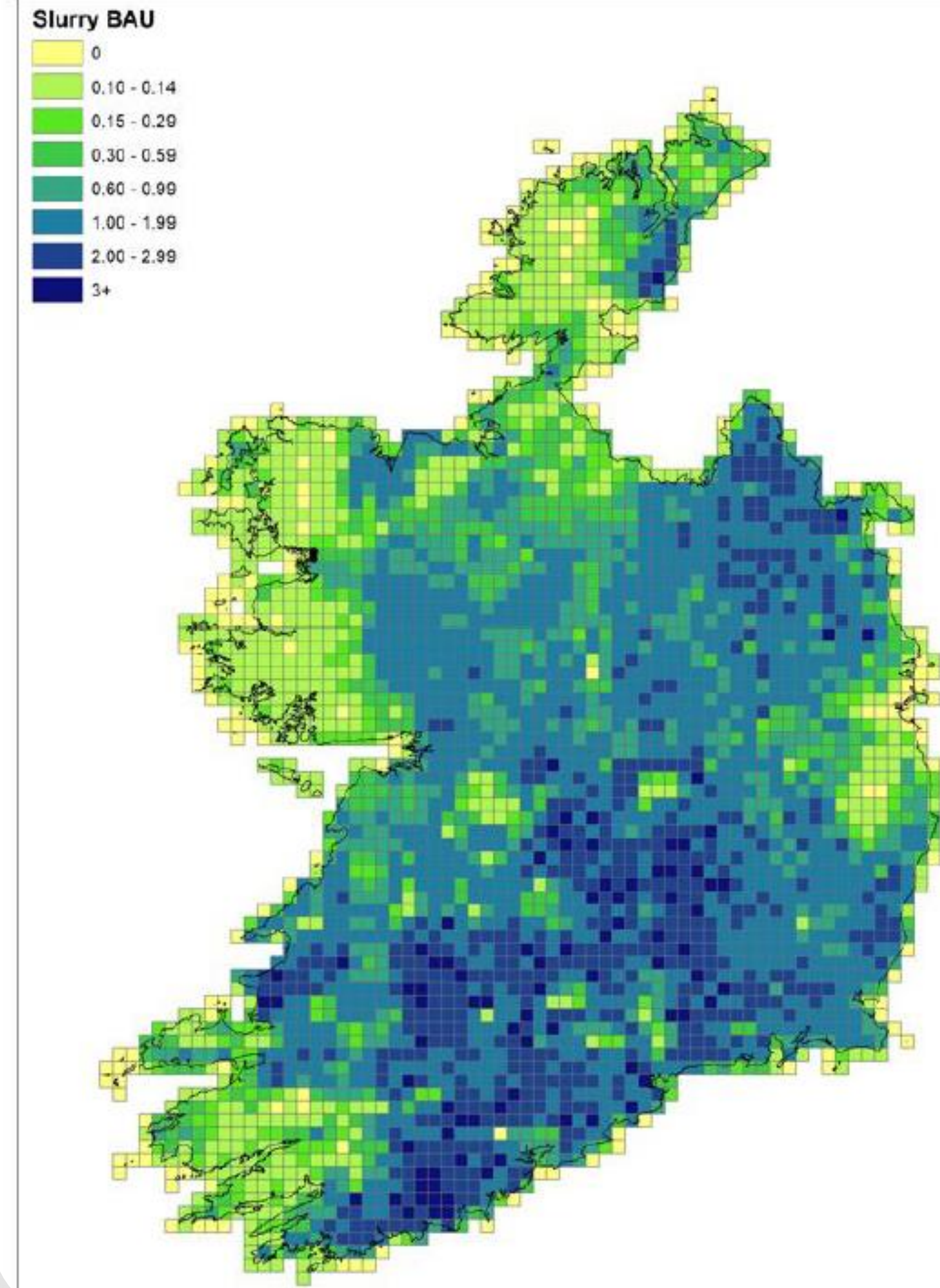
- ACRES General and ACRES Cooperation
- targeted and general actions
- Three TIERS of actions e.g. low input grassland, planting new hedgerow, riparian buffer strips



Biomethane

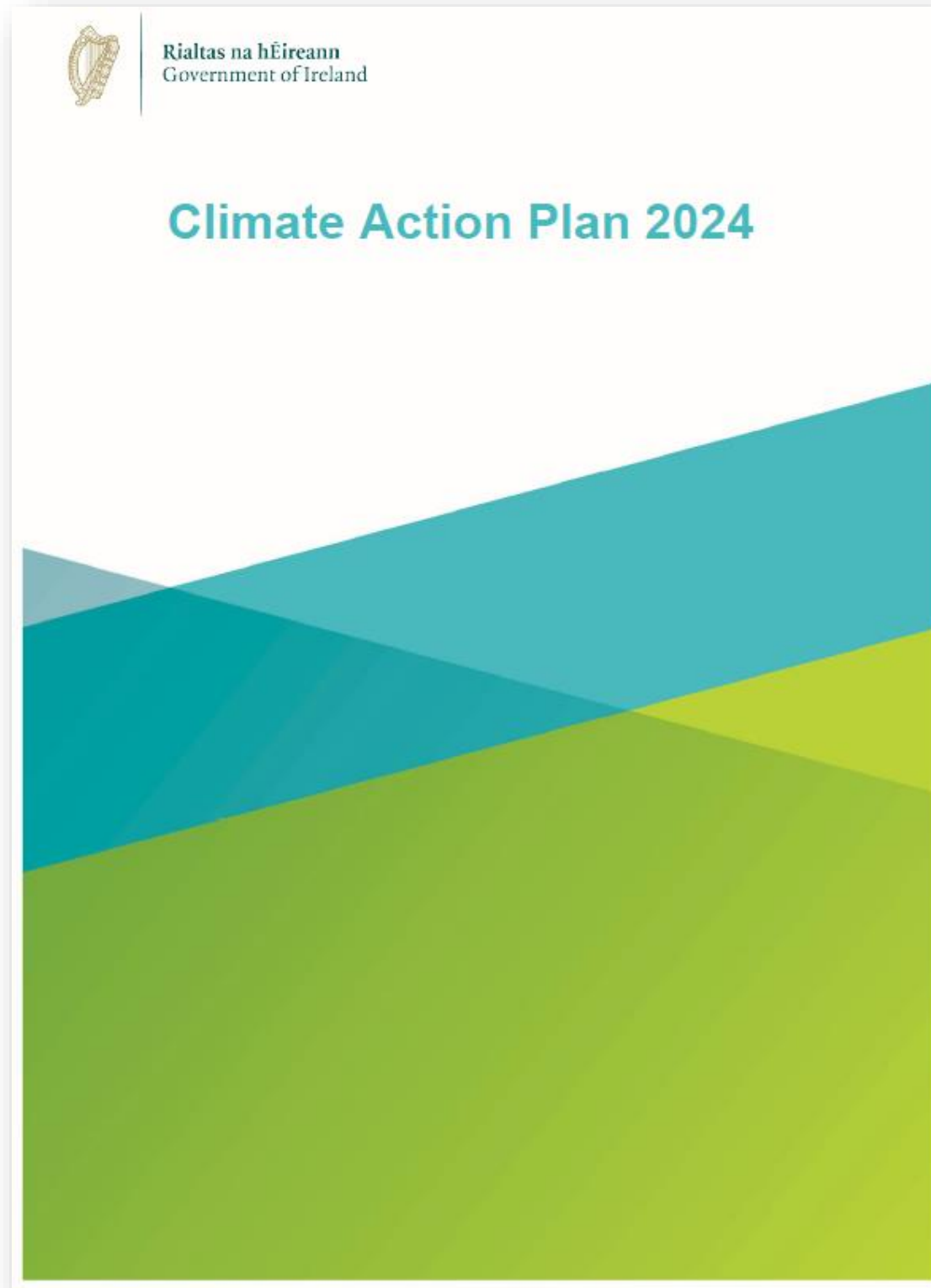


business as Usual



- Draft Biomethane Strategy
- Climate Action Plan 2024 - 5.7 TWh Target by 2030
- ~120,000 ha land needed for silage for AD plants

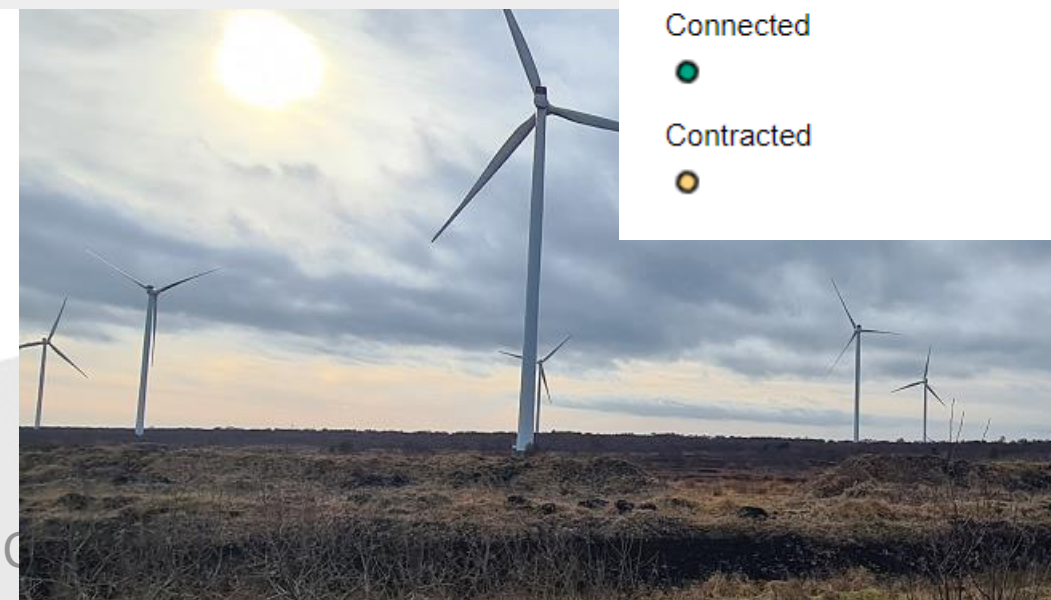
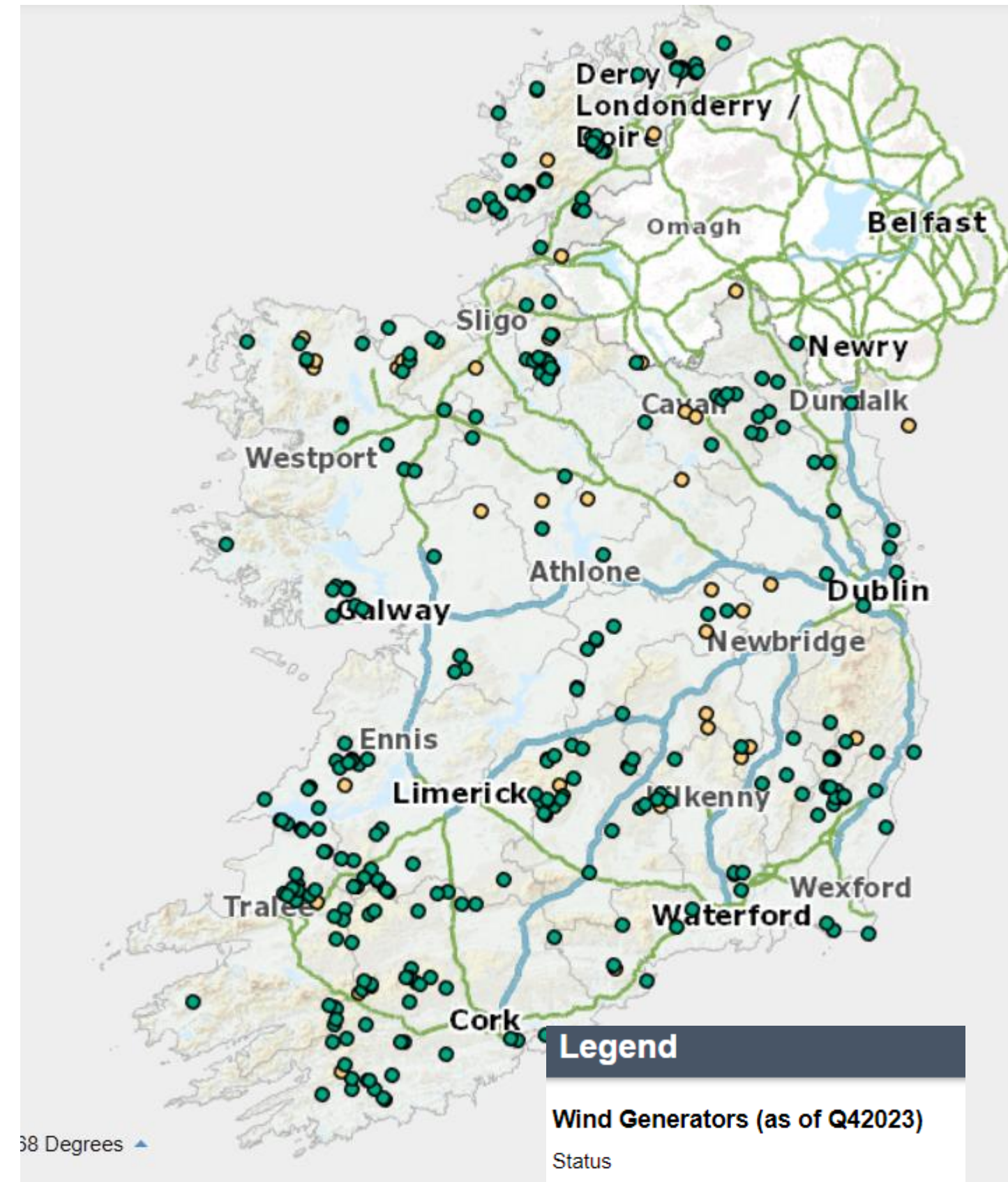
Renewable Energy



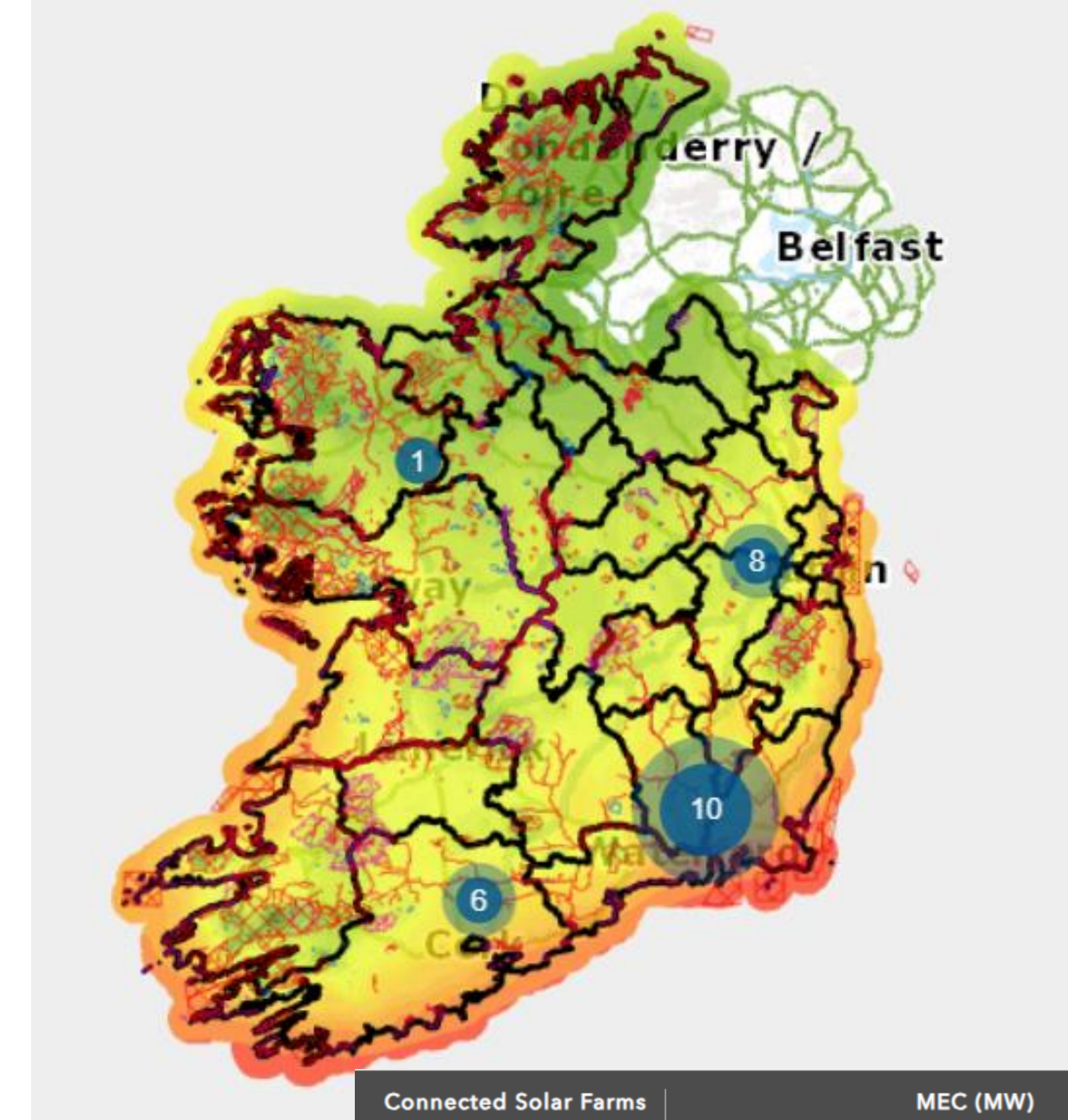
Key Targets

National Target	2025	2030
Renewable Electricity Share	50%	80%
Onshore Wind	6 GW	9 GW
Solar	Up to 5 GW	8 GW
Offshore Wind	-	At least 5 GW

seai SUSTAINABLE ENERGY AUTHORITY OF IRELAND Wind Mapping System



seai Solar Atlas



(Data sources: CAP 2023 <https://gis.seai.ie/solar/> <https://gis.seai.ie/wind/>)

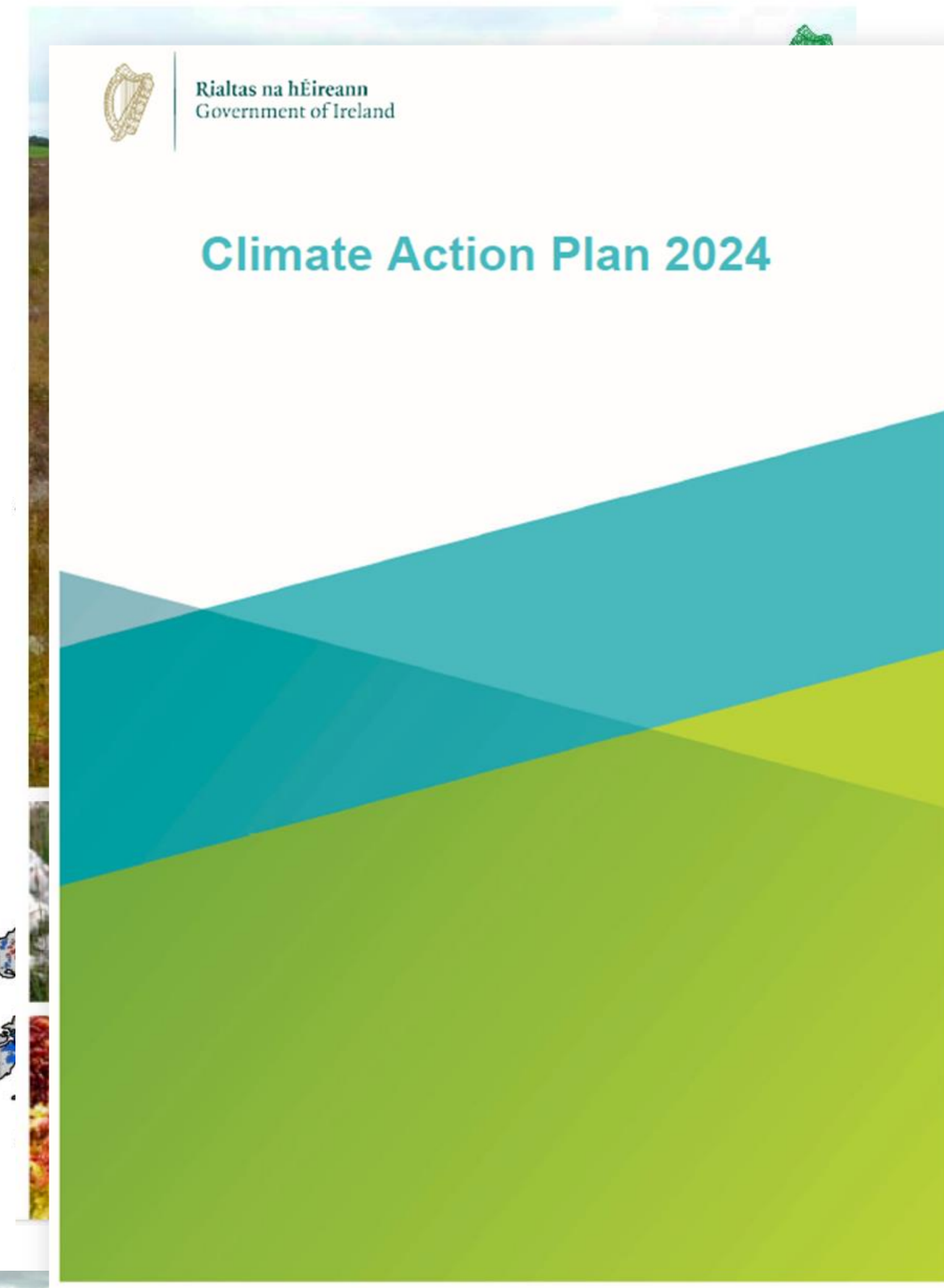
Natural Heritage (biodiversity) and Built Heritage

- **160,000** known archaeological sites and monuments across Ireland, protected under national monument and planning legislation
- **87,000** hectares across six national parks and more than eighty nature reserves
- Natural and built heritage are important for tourism
- 85% of our EU-protected habitats are in unfavourable status, with almost half (46%) demonstrating ongoing declines
- Nature Restoration Law pending and National Restoration Plan by 2026



Peatlands

- Peatland cover 6.5% of Land cover nationally (LUR P1)
- **Enhanced Decommissioning, Rehabilitation and Restoration Scheme (EDRRS)** aims to rehabilitate approx **33,000 ha** of peatlands, across 82 Bord na Móna bogs, previously used for peat extraction for electricity generation (CAP 24)
- Additional **30,000 ha** exploited peat rehabilitated (CAP 24)
- **EU LIFE Peatlands and People project** (€10 million)
- Midlands Carbon Catchment Study on farmed peat soils....



Contents



- LUR Phase 1 Policy Catalogue Survey
- LUR Phase 2 Policy Survey
- Policy examples with Land use asks/targets
- **Ongoing work**



Ongoing work – Land Use Policies

- Continuing follow up with Departments and Agencies
- Policy information feeding into Land use and Climate modelling
- Policy information feeding into Geo-spatial analysis
- Include relevant outputs in LUR Phase 2 Final report
- Liaise with relevant groups such as Land Use Forum etc, Nature Restoration Law etc .



Land Use Review



Ongoing work – Land Use Policies

- Continuing follow up with Departments and Agencies
- Progress Technical Working group and Stakeholder Engagement meetings and outputs
- Progress LUR Phase 1 Recommendations
- Policy information feeding into Land use and Climate modelling
- Policy information feeding into Geo-spatial analysis
- Progress LUR FTP and other Research Projects
 - FTPs – 1/Green Finance 2/Land Owner
 - Role of public land/ History of Land Use in Ireland
- Include relevant outputs in LUR Phase 2 Final report for Q1 2025
- Liaise with relevant groups such as Land Use Forum, Nature Restoration Law, Climate modelling group etc .



Land Use
Review



Go raibh maith agaibh

lur@decc.gov.ie

Marc.kierans@decc.gov.ie